

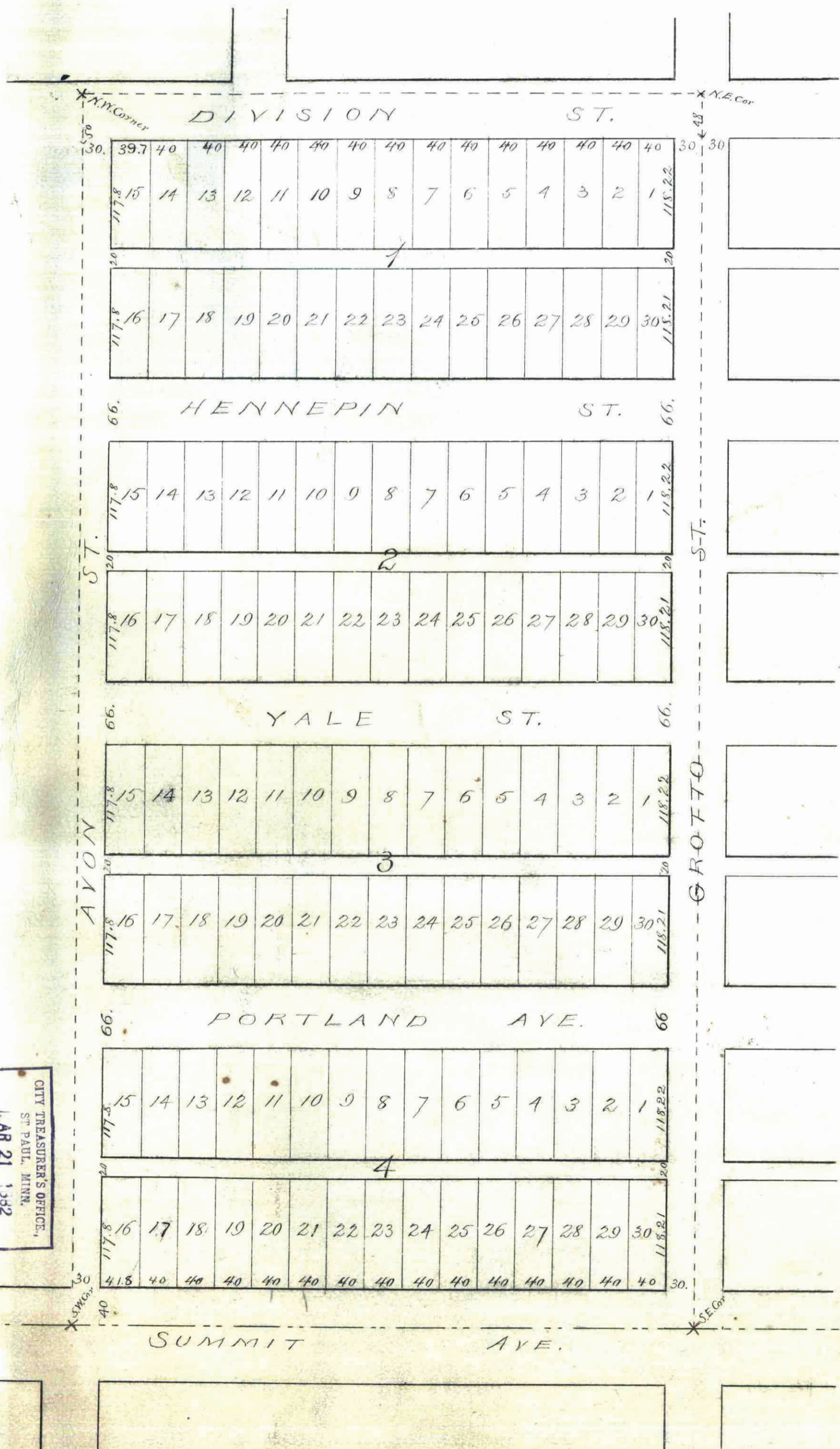
# PALACE ADD<sup>n</sup> TO ST PAUL.

✓ 27

St Paul Minn Nov 1<sup>st</sup> 1881  
 We Herman Greve, Ansel Oppenheim and Frank B. Clarke certify that we are the owners of the east half of the SW 1/4 of the NE 1/4 of Section 2 Town 28 N Range 23 W and that we have caused the same to be surveyed and plotted as hereon shown, - as "Palace Addition to St Paul" and we hereby donate the streets and alleys for public use.

In Presence of  
 Wm B. McCloskey  
 S. P. Tolson

Herman Greve  
 Ansel Oppenheim  
 Frank B. Clarke



State of Minnesota  
 County of Ramsey Jas. J. Wm B. McCloskey a notary public  
 do hereby certify that on the first day of  
 November A.D. 1881 personally came before me  
 Herman Greve, Ansel Oppenheim and Frank B. Clarke  
 to me well known to be the same persons who executed  
 the foregoing certificate and they each acknowledged that  
 they executed the same freely and voluntarily for the uses and  
 purposes therein expressed.

Wm B. McCloskey  
 Notary Public  
 Ramsey County  
 Minnesota

Approved Nov 1<sup>st</sup> 1881

S. P. Tolson  
 Wm A. Vaudsley }  
 Platt  
 Commissioners

Examined and approved

L. W. Rundlett

City Engr.

Taxes paid and Transfer Entered March 21<sup>st</sup> 1882

J. H. Coody  
 County Auditor  
 Ramsey County  
 Minn

This plat document  
 is an UNOFFICIAL  
 copy of a  
 Subdivision Plat or  
 Registered Land Survey  
 and is made available for  
 information purposes only.



To obtain an official copy  
 please contact the Ramsey  
 County Recorder's Office.

STATE OF MINNESOTA  
 County of Ramsey  
 Office of the Register of Deeds  
 This is to certify that the within  
 instrument was filed for Record  
 in this Office at St. Paul, on the  
 21<sup>st</sup> day of March, A. D.  
 1882 at 4:20 o'clock P. M., and  
 that the same is duly recorded in  
 Book P of Town Plats  
 Page 27  
 W. J. Fineman  
 Register of Deeds  
 Deputy

I certify that this diagram correctly represents  
 Palace Addition to St Paul as surveyed &  
 plotted by me.

St Paul Minn Oct 30<sup>th</sup> 1881

D. S. Lattin & Co.

Accepted by Council  
 this 1<sup>st</sup> day of November 1881  
 Wm B. McCloskey  
 City Clerk

CITY TREASURER'S OFFICE,  
 ST. PAUL, MINN.  
 1. APR 21 1882  
 ASSESSMENT PAID. BY S. P. T.  
 S. P. Tolson  
 CITY TREAS.