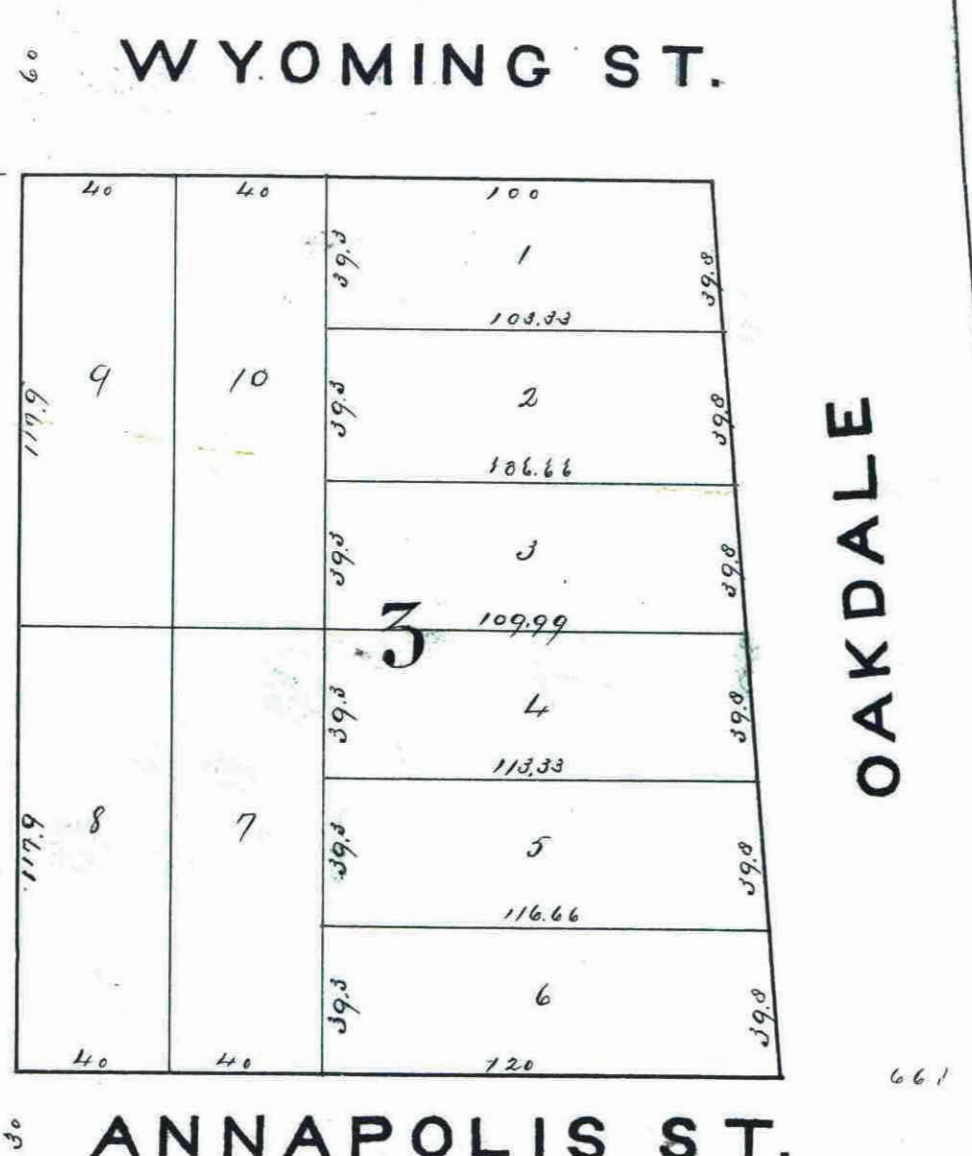
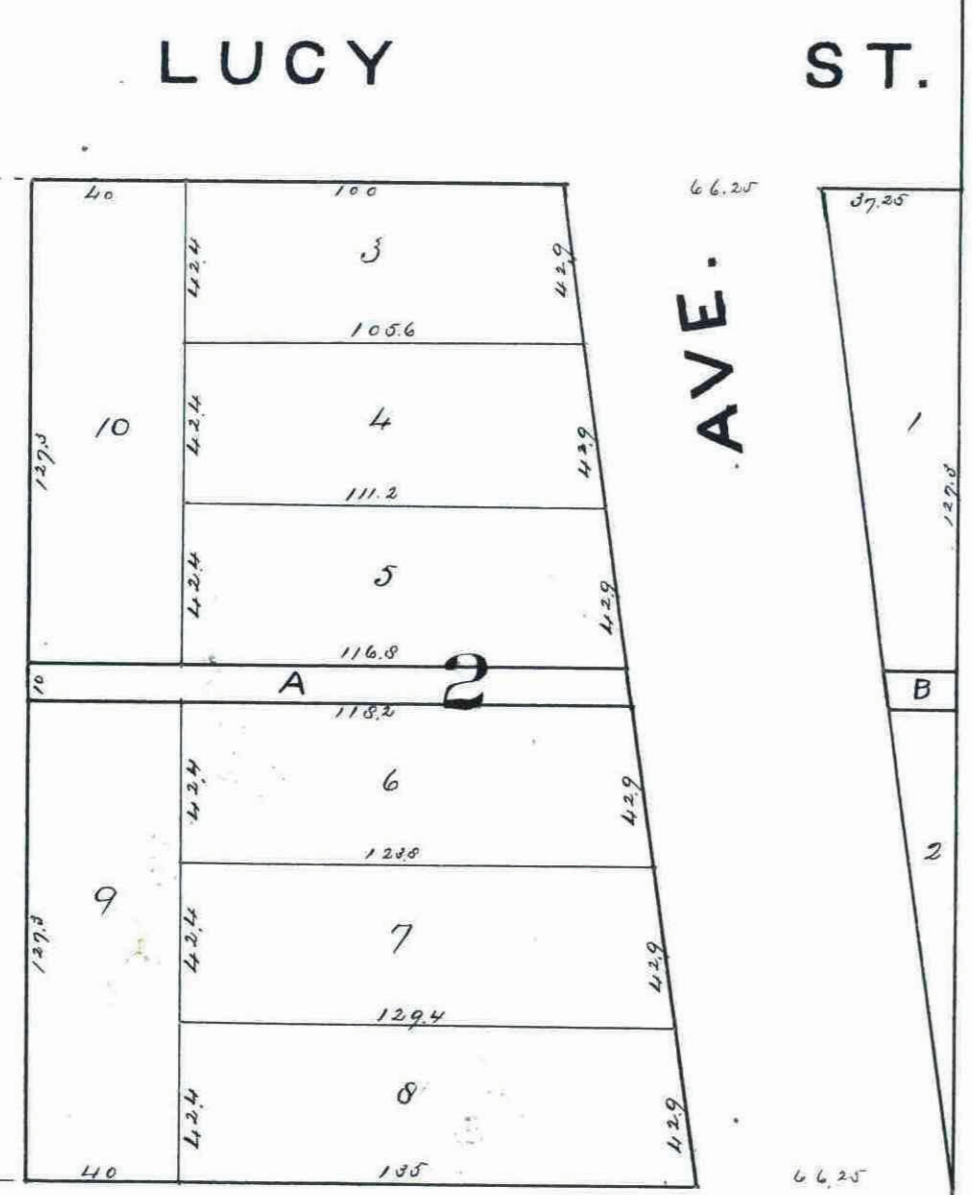
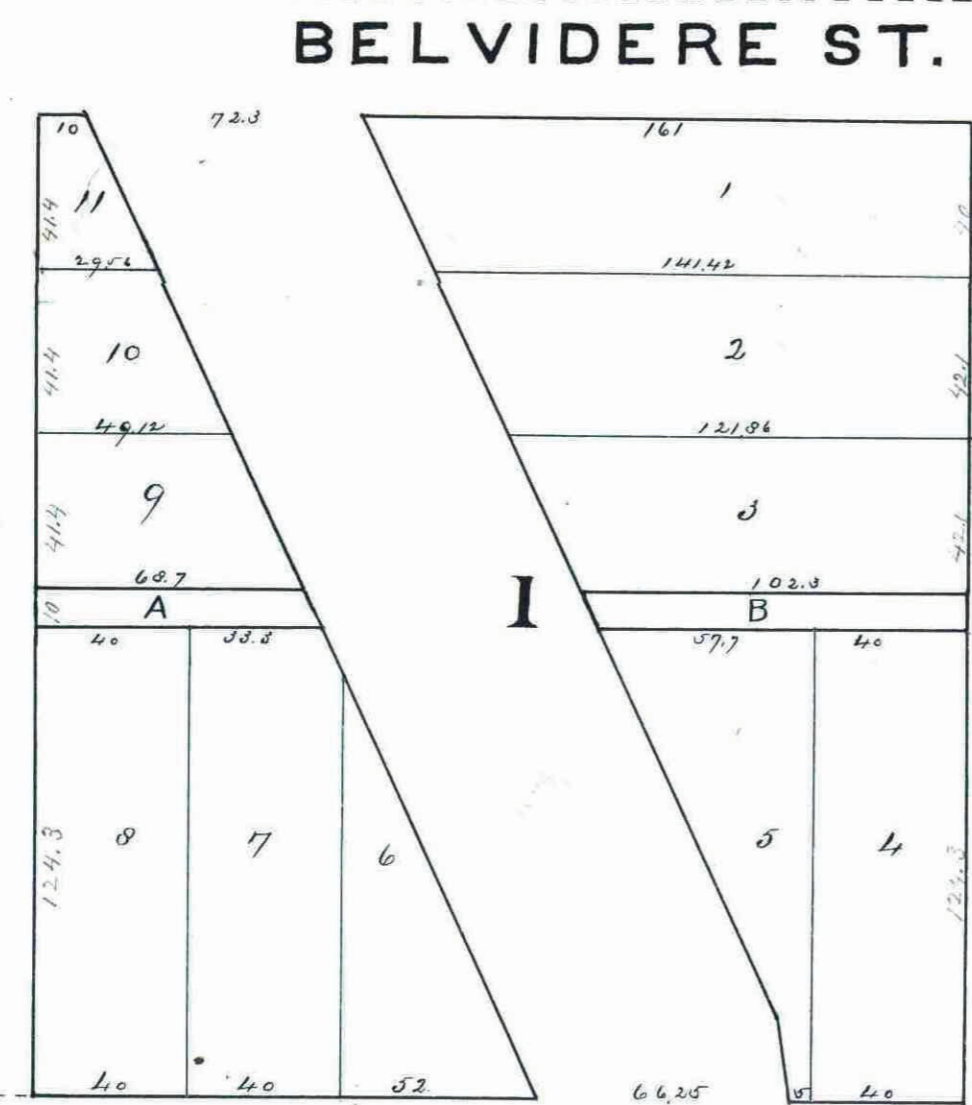


**BELVIDERE PARK  
SUBDIVISION OF LOT 2  
OF BIDWELL'S ADDITION  
TO WEST ST. PAUL, MINN.**



SUBDIVISION LOT 3

BELVIDERE ST.

LUCY ST.

WYOMING ST.

ANNAPOLIS ST.

AVE.

OAKDALE

I certify that I have surveyed and platted the property described on this map as Belvidere Park, a Subdivision of Lot 2 of Bidwells Addition to West Saint Paul Minnesota, and have placed iron monuments at the corners of each and every block as shown on this map and the same is a correct plat of said survey.

J. B. Hawley,  
Surveyor.

State of Minnesota } s.s.  
County of Ramsey }

On the 10 day of May, 1884 Personally appeared before me J. B. Hawley to me well known to be the identical person who surveyed the above described parcel of land and executed the above certificate and acknowledged said certificate to be his free act and deed, and true and correct.

J. B. Hawley  
Notary Public  
Ramsey County.

We the undersigned owners of Lot 2 of Bidwells Addition to West Saint Paul Minnesota hereby certify that we have caused the same to be surveyed and platted as Belvidere Park Subdivision of Lot 2 of Bidwells Addition to West Saint Paul, Minnesota and do hereby dedicate to the public and for the public use forever the streets as on this map laid out and indicated.

In witness whereof we have placed our hands and seals on the day of May 1884.

In the presence of  
Arch G. Straizand  
Charles M. Meyer  
William Nijer

State of Minnesota } s.s.  
County of Ramsey }

On the 10 day of May 1884 Personally appeared before me Arch G. Straizand, Charles M. Meyer and Catharine A. Meyer his wife to me well known to be the identical persons who executed the above certificate and acknowledged the same to be their free act and deed.

Arch G. Straizand  
Notary Public  
Ramsey County.

Examined and approved on the day of May 1884.  
City Engineer City of Saint Paul.

Approved by the plat Commission on the 10 day of May 1884.

S. T. Holson  
J. B. Hawley  
Plat Commission

Accepted by the Common Council of the City of Saint Paul on the 10 day of June 1884.

City Clerk

Taxes Paid & Transfer Colored  
Jan 7 1884  
County Auditor

CITY TREASURERS OFFICE  
ST. PAUL, MINN.  
JUN 7 1884  
ASSESSMENTS PAID.  
Geo Reis, City Treas.

This plat document is an UNOFFICIAL copy of a Subdivision Plat or Registered Laid Survey and is made available for information purposes only.  
To obtain an official copy please contact the Ramsey County Recorder's Office.

STATE OF MINNESOTA, s.s.  
County of Ramsey.  
OFFICE OF THE REGISTER OF DEEDS.  
This is to certify that the within instrument was filed for Record in this office, at St. Paul, on the 10 day of May, A. D. 1884 at 3 o'clock P. M., and that the same was duly recorded in Book 11 of Plats page 44.  
R. C. Wiley  
Register of Deeds.  
By \_\_\_\_\_

44  
44