

This plat document is an UNOFFICIAL copy of a Subdivision Plat or Registered Land Survey and is made available for information purposes only.



To obtain an official copy please contact the Ramsey County Recorder's Office.

Witness my hand and official Seal, this Day of _____ A.D. 1882

Office of the Register of Deeds, within, and for said County, do hereby certify that the foregoing is a true and correct copy of a _____ as recorded in this Office, in Book _____ of Town Plats on Page _____

STATE OF MINNESOTA, } ss.
County of Ramsey, }

Office of the Register of Deeds.

I, G. H. LLENAN, Register of Deeds,

within, and for said County, do hereby certify that the foregoing is a true and correct copy of a _____ as recorded in this Office, in Book _____ of Town Plats on Page _____

is a true and correct copy of a _____ as recorded in this Office, in Book _____ of Town Plats on Page _____

OAK PARK

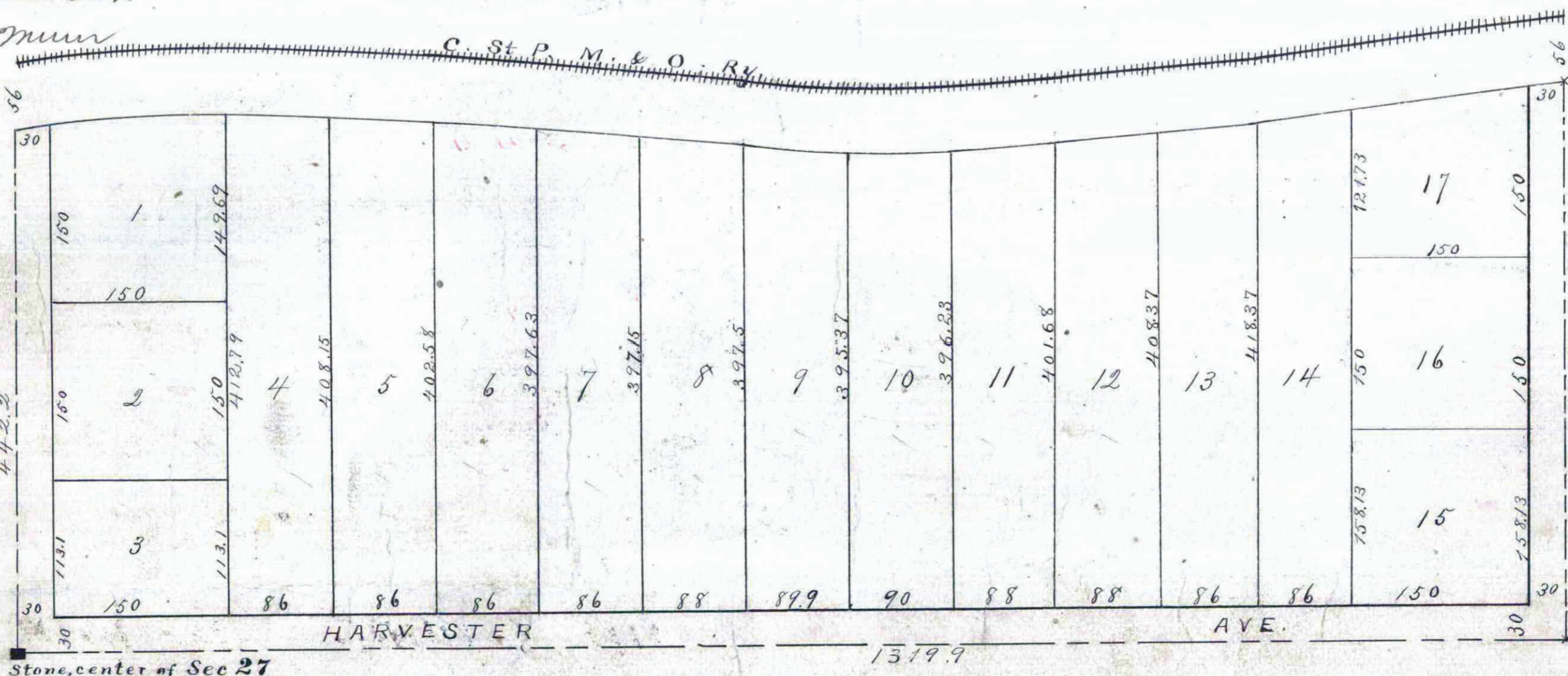


Transferred Transfers Entered
St Paul Aug 24th 1882

J. H. Hendry
County Auditor
Ramsey County

I certify that this diagram correctly represents "Oak Park" as surveyed by me in the month of May A.D. 1882, and that the property embraced in said "Oak Park" comprises all that part of the S.W. 1/4 of the N.E. 1/4 of Sec 27 Town 29 Range 22 lying southerly of the C. St. P. M. & O. Railway

St. Paul Minn. May 31st 1882
D. L. Curtice
Per. L. M. B.



Stone, center of Sec 27

1319.9

Scale 100 ft = 1 inch

We Wm. L. Ames, and Helen L. his Wife and A. B. Kiefer and August E. his Wife certify that on or about the 30th day of June A.D. 1882, for and to the use of the said Wm. L. Ames, his Wife and A. B. Kiefer and August E. his Wife, we have surveyed, and plotted and caused the same to be surveyed, and plotted and we have by deed the above described lots for parties Wm. L. Ames, Helen L. Ames, A. B. Kiefer, August E. Kiefer, and Helen L. Kiefer.

Witness my hand and official Seal, this Day of _____ A.D. 1882

Wm. L. Ames
Helen L. Ames
A. B. Kiefer
August E. Kiefer

State of Minnesota } ss.
County of Ramsey }

I, G. H. LLENAN, Register of Deeds, do hereby certify that the foregoing is a true and correct copy of a _____ as recorded in this Office, in Book _____ of Town Plats on Page _____