

# DALTON PARK

NORTH ST. PAUL, MINNESOTA

2775  
SHEET 1 OF 2 SHEETS

CARTWRIGHT & OLSON  
LAND SURVEYORS

THIS IS TO CERTIFY THAT WE, J. DALTON SALISBURY AND ALICE SALISBURY, HUSBAND AND WIFE, OWNERS OF THAT PART OF THE SOUTH 3/4 OF THE SOUTHEAST 1/4 OF SECTION 2, TOWNSHIP 29 NORTH, RANGE 22 WEST, RAMSEY COUNTY, MINNESOTA, DESCRIBED AS FOLLOWS: COMMENCING AT A POINT ON THE NORTH LINE OF SAID SOUTH 3/4 OF THE SOUTHEAST 1/4 DISTANT 250 FEET WEST FROM THE NORTHEAST CORNER THEREOF; THENCE SOUTH 89° 54' 45" WEST ALONG SAID NORTH LINE THEREOF A DISTANCE OF 2387.08 FEET, MORE OR LESS, TO THE NORTHWEST CORNER THEREOF; THENCE SOUTH 0° 18' 45" EAST ALONG THE WEST LINE THEREOF A DISTANCE OF 733 FEET; THENCE SOUTH 69° 19' EAST A DISTANCE OF 555 FEET; THENCE NORTH 49° 41' EAST A DISTANCE OF 304.75 FEET; THENCE NORTH 89° 54' 45" EAST A DISTANCE OF 1132.32 FEET; THENCE NORTH 54° 00' EAST A DISTANCE OF 263.0 FEET, MORE OR LESS, TO THE MOST WESTERLY CORNER OF LOT 3, BLOCK 9, GUDIM'S HIGHLAND HILLS PLAT 2, ACCORDING TO THE PLAT THEREOF ON FILE AND OF RECORD IN THE OFFICE OF THE REGISTER OF DEEDS, RAMSEY COUNTY, MINNESOTA; THENCE NORTH 54° 00' EAST ALONG THE NORTHERLY LINE OF SAID GUDIM'S HIGHLAND HILLS PLAT 2 A DISTANCE OF 90 FEET; THENCE NORTH 26° 03' 30" WEST ALONG SAID NORTHERLY LINE A DISTANCE OF 67.27 FEET; THENCE NORTH 77° 30' EAST ALONG SAID NORTHERLY LINE A DISTANCE OF 249.03 FEET, MORE OR LESS, TO ITS INTERSECTION WITH A LINE BEARING DUE SOUTH FROM THE POINT OF BEGINNING; THENCE DUE NORTH A DISTANCE OF 411.94 FEET, MORE OR LESS, TO THE POINT OF BEGINNING. (FOR THE PURPOSE OF THIS DESCRIPTION, THE EAST LINE OF SAID SOUTHEAST 1/4 IS ASSUMED A DUE NORTH AND SOUTH LINE). EXCEPT THAT PART OF THE SOUTH 3/4 OF THE SOUTHEAST 1/4 OF SECTION 2, TOWNSHIP 29 NORTH, RANGE 22 WEST, RAMSEY COUNTY, MINNESOTA, DESCRIBED AS FOLLOWS: COMMENCING AT A POINT ON THE NORTH LINE OF SAID SOUTH 3/4 OF SOUTHEAST 1/4 DISTANT 250 FEET WEST FROM THE NORTHEAST CORNER THEREOF; THENCE SOUTH 89° 54' 45" WEST ALONG SAID NORTH LINE THEREOF A DISTANCE OF 2387.08 FEET, MORE OR LESS, TO THE NORTHWEST CORNER THEREOF; THENCE SOUTH 0° 18' 45" EAST ALONG THE WEST LINE THEREOF A DISTANCE OF 108 FEET; THENCE NORTH 89° 54' 45" EAST A DISTANCE OF 580.0 FEET; THENCE SOUTH 0° 18' 45" EAST A DISTANCE OF 300.0 FEET; THENCE NORTH 89° 54' 45" EAST A DISTANCE OF 115.0 FEET; THENCE SOUTH 0° 18' 45" EAST A DISTANCE OF 30.0 FEET; THENCE NORTH 89° 54' 45" EAST A DISTANCE OF 1185.0 FEET; THENCE NORTH 0° 18' 45" WEST A DISTANCE OF 45.51 FEET; THENCE DUE EAST A DISTANCE OF 109.44 FEET; THENCE SOUTH 36° 44' 48" EAST A DISTANCE OF 79.01 FEET; THENCE SOUTH 84° 57' 50" EAST A DISTANCE OF 105.49 FEET, MORE OR LESS, TO THE MOST WESTERLY CORNER OF LOT 1, BLOCK 9, GUDIM'S HIGHLAND HILLS PLAT 2, ACCORDING TO THE PLAT THEREOF ON FILE AND OF RECORD IN THE OFFICE OF THE REGISTER OF DEEDS, RAMSEY COUNTY, MINNESOTA; THENCE NORTH 77° 30' EAST ALONG SAID NORTHERLY LINE A DISTANCE OF 249.03 FEET, MORE OR LESS, TO ITS INTERSECTION WITH A LINE BEARING DUE SOUTH FROM THE POINT OF BEGINNING; THENCE DUE NORTH A DISTANCE OF 411.94 FEET, MORE OR LESS TO POINT OF BEGINNING. (FOR THE PURPOSE OF THIS DESCRIPTION, THE EAST LINE OF SAID SOUTHEAST 1/4 IS ASSUMED A DUE NORTH AND SOUTH LINE). ALSO DALTON DEVELOPMENT, INC., A MINNESOTA CORPORATION, OWNER OF THE EXCEPTION DESCRIBED ABOVE, HAVE CAUSED THE SAME TO BE SURVEYED AND PLATTED AND HEREAFTER KNOWN AS DALTON PARK AS SHOWN BY THIS PLAT, AND HEREBY DEDICATE TO THE PUBLIC AND FOR THE PUBLIC USE FOREVER ALL AVENUES AND WALKWAYS AS SHOWN AND SUBJECT HOWEVER TO THE EASEMENTS FOR UTILITY AND DRAINAGE PURPOSES AS SHOWN. WITNESS OUR HANDS AND SEAL THIS 15<sup>th</sup> DAY OF June A.D. 1958.

IN PRESENCE OF:

Herbert M. Bond AND Kathryn G. Hartman  
Herbert M. Bond AND Kathryn G. Hartman  
Herbert M. Bond AND Kathryn G. Hartman  
Norman C. Hoium AND Marie Sandholm

SIGNED:

J. Dalton Salisbury  
J. DALTON SALISBURY  
Alice Salisbury  
ALICE SALISBURY  
BY Andrew E. Shuster DALTON DEVELOPMENT, INC.  
ANDREW E. SHUSTER ITS PRESIDENT  
BY L. C. Paulson ITS SECRETARY, TREAS.  
L. C. PAULSON

STATE OF MINNESOTA)ss  
COUNTY OF RAMSEY

ON THIS 15<sup>th</sup> DAY OF June A.D. 1958 BEFORE ME THE UNDERSIGNED PERSONALLY APPEARED J. DALTON SALISBURY AND ALICE SALISBURY, HUSBAND AND WIFE, TO ME KNOWN TO BE THE PERSONS DESCRIBED IN AND WHO EXECUTED THE FOREGOING INSTRUMENT AND ACKNOWLEDGED THAT THEY EXECUTED THE SAME AS THEIR FREE ACT AND DEED.

Geo. A. Membre  
NOTARY PUBLIC, RAMSEY COUNTY, MINNESOTA  
MY COMMISSION EXPIRES Sept. 29, 1960

STATE OF MINNESOTA)ss  
COUNTY OF RAMSEY

ON THIS 15<sup>th</sup> DAY OF June A.D. 1958, BEFORE ME APPEARED ANDREW E. SHUSTER AND L. C. PAULSON, WHO EACH BEING DULY SWORN DID SAY THAT THEY ARE RESPECTIVELY THE PRESIDENT AND SECRETARY - TREASURER OF THE DALTON DEVELOPMENT, INC., A MINNESOTA CORPORATION, THE CORPORATION NAMED IN THE FOREGOING INSTRUMENT ~~AND THE SEAL AFFIXED TO SAME INSTRUMENT IS THE CORPORATE SEAL OF SAID CORPORATION~~ AND THAT SAID INSTRUMENT WAS SIGNED AND SEALED IN BEHALF OF SAID CORPORATION BY THE AUTHORITY OF ITS BOARD OF DIRECTORS, AND SAID PRESIDENT AND SECRETARY-TREASURER ACKNOWLEDGED SAID INSTRUMENT TO BE THE FREE ACT AND DEED OF SAID CORPORATION, *said corporation has no corporate seal.*

Gerald H. Bell  
NOTARY PUBLIC, RAMSEY COUNTY, MINNESOTA  
MY COMMISSION EXPIRES Oct. 23, 1960

I HEREBY CERTIFY TO HAVING SURVEYED THE PROPERTY DESCRIBED ON THIS PLAT AS DALTON PARK AND HAVE PLACED IRON MONUMENTS AT THE CORNERS AS SHOWN AND THE SAME IS CORRECT. THERE IS NO LOW WET GROUND NOR ANY TRAVELED ROAD OR EASEMENT ON OR ACROSS SAME EXCEPT AS SHOWN.

Harvey A. Cartwright  
REGISTERED SURVEYOR - MINNESOTA CERTIFICATE NO. 1983

STATE OF MINNESOTA)ss  
COUNTY OF HENNEPIN

ON THIS 9<sup>th</sup> DAY OF JUNE A.D. 1958, BEFORE ME, THE UNDERSIGNED, PERSONALLY APPEARED HARVEY A. CARTWRIGHT TO ME KNOWN TO BE THE PERSON DESCRIBED IN AND WHO EXECUTED THE SAME AS HIS FREE ACT AND DEED.

Norman C. Hoium  
NOTARY PUBLIC, HENNEPIN COUNTY, MINNESOTA  
MY COMMISSION EXPIRES Oct. 14, 1961

ACCEPTED BY THE COUNCIL July 7<sup>th</sup> A.D. 1958

APPROVED July 7<sup>th</sup> A.D. 1958

Norman L. Kattke  
VILLAGE CLERK

ACCEPTED AND APPROVED THIS 14<sup>th</sup> DAY OF July A.D. 1958.

Abraham D. Compton  
B.R. Teg ) PLAT COMMISSION  
Adrian Paulsen )

COMMISSIONER OF PUBLIC WORKS

Abstract # 1459950

# DALTON PARK

NORTH ST. PAUL, MINNESOTA

SHEET 2 OF 2 SHEETS

2775

5112

CARTWRIGHT & OLSON  
LAND SURVEYORS

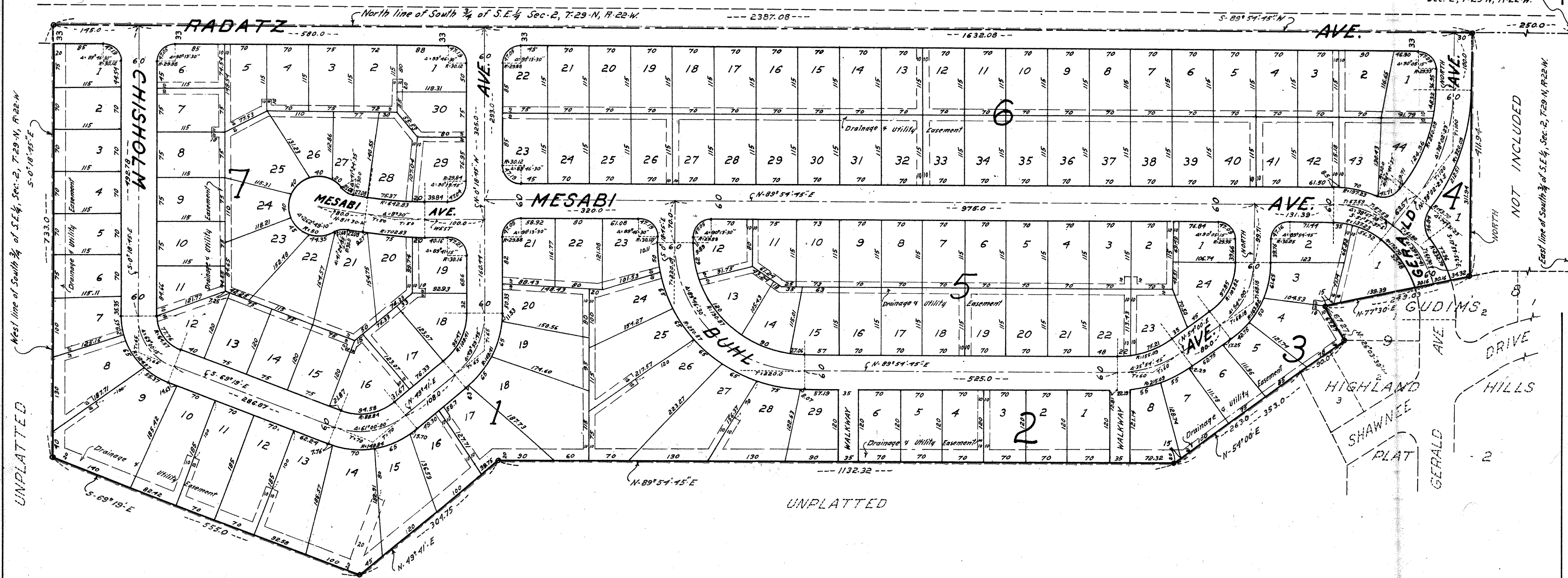


SCALE - 1" = 100'

☉ - DENOTES IRON MONUMENTS

UNPLATTED

NE. Corner of South 3/4  
Sec. 2, T.29-N, R.22-W.



NOT INCLUDED

Recorded July 21, 1958