

# SUN - RAY TERRACE ADDITION NO. 2

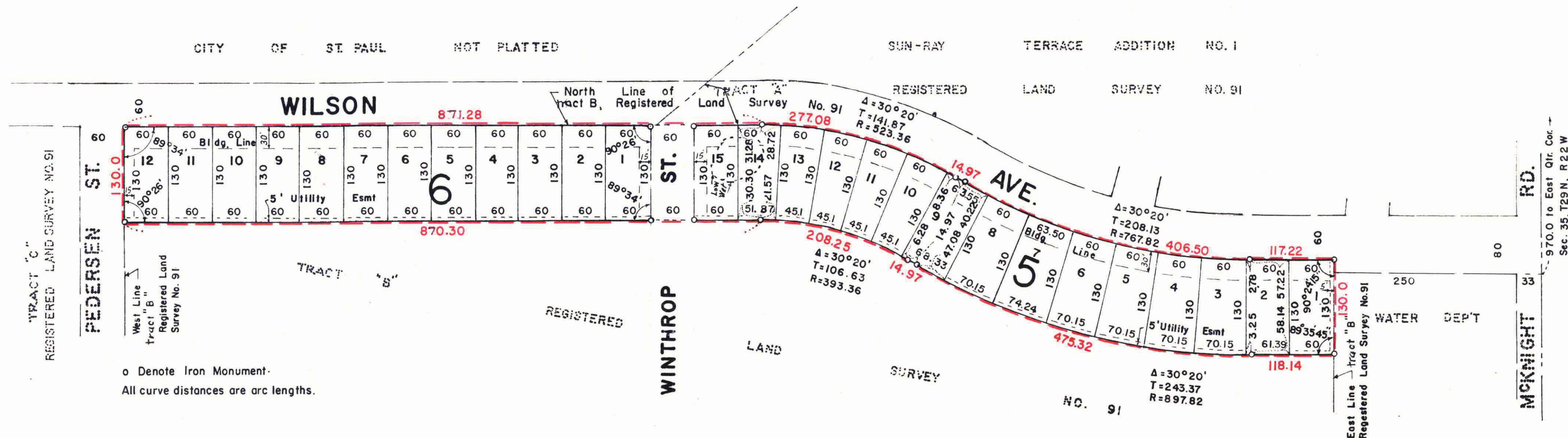
## SAINT PAUL, MINNESOTA

SCALE 1"=100'

This plat document is an UNOFFICIAL copy of a Subdivision Plat or Registered Land Survey and is made available for information purposes only.

To obtain an official copy please contact the Ramsey County Recorder's Office.

CHARLES O. GEORGI COMPANY  
CIVIL ENGINEERING & LAND SURVEYING



o Denote Iron Monument.  
All curve distances are arc lengths.

This is to certify that we, SUN-RAY TERRACE CORPORATION, a Minnesota Corporation, owner of the following:  
the North 130 feet of Tract "B", Registered Land Survey No. 91 have caused the same to be surveyed and platted and hereafter known as SUN-RAY TERRACE ADDITION NO. 2 as shown by this plat, and hereby dedicate to the public and for public use forever all avenues, streets and easements as shown.

Witness our hand and seal this 13th day of November 1957

In the presence of:  
Fred H. Wolff Jr.  
Robert T. Johnson

Sun-Ray Terrace Corp.  
by John T. Bonneyford President title  
by John P. Coggrave Sec. title

State of Minnesota ) ss.  
County of Ramsey )

On this 13th day of November A.D. 1957 before me appeared John T. Bonneyford and John P. Coggrave who each being duly sworn did say that they are respectively the President and Sec. Secretary of the Sun-Ray Terrace Corp, a Minnesota Corporation, the corporation named in the foregoing instrument and seal affixed to same instrument is the Corporate seal of said corporation and that said instrument was signed and sealed in behalf of said corporation by authority of its Board of Directors, and said John T. Bonneyford and said John P. Coggrave acknowledge said instrument to be the free act and deed of said corporation.

Fred H. Wolff Jr.  
Notary Public  
My Commission expires \_\_\_\_\_

I hereby certify to having surveyed the property described on this plat as SUN-RAY TERRACE ADDITION NO. 2, and have placed iron monuments at the corners shown and the same is correct. There is no low wet ground nor any traveled road or easement on or across same except as shown.

Charles O. Georgi  
Registered Land Surveyor  
Minnesota Certificate No. 3960

State of Minnesota ) ss.  
County of Ramsey )

On this 13th day of November A.D. 1957, before me, the undersigned, personally appeared Charles O. Georgi to me known to be the person described in and who executed the foregoing instrument and acknowledge that he executed the same as his free act and deed.

Chester E. Erickson  
Notary Public  
My Commission expires \_\_\_\_\_

INSTRUMENT NUMBER 384929  
CERTIFICATE NUMBER 165524  
BOOK 378 PAGE 24  
STATE OF MINNESOTA ) ss.  
County of Ramsey )

OFFICE OF THE REGISTRAR OF TITLES  
This is to certify that this instrument was filed in the office of St. Paul on the 13th day of November A.D. 1957 at 1:00 o'clock PM by Robert T. Johnson Registrar of Titles

Taxes for the year 1956 on the lands described herein PAID  
NOV 13 1957  
OTTO W. KOHLAND, Jr., Treasurer  
RAMSEY COUNTY, MINNESOTA

TAXES PAID AND TRANSFER ENTERED  
NOV 13 1957  
EUGENE A. MORICK, Auditor  
MINN.

Accepted and approved by the City Council, St Paul, Minnesota this 13th day of November 1957

Joseph R. O'Sullivan  
City Clerk

Accepted and approved this 13th day of November 1957

Harbert H. West  
Alfred D. ... Plat Commission  
R. D. ...  
William P. ... Commissioner of Public Works

623482