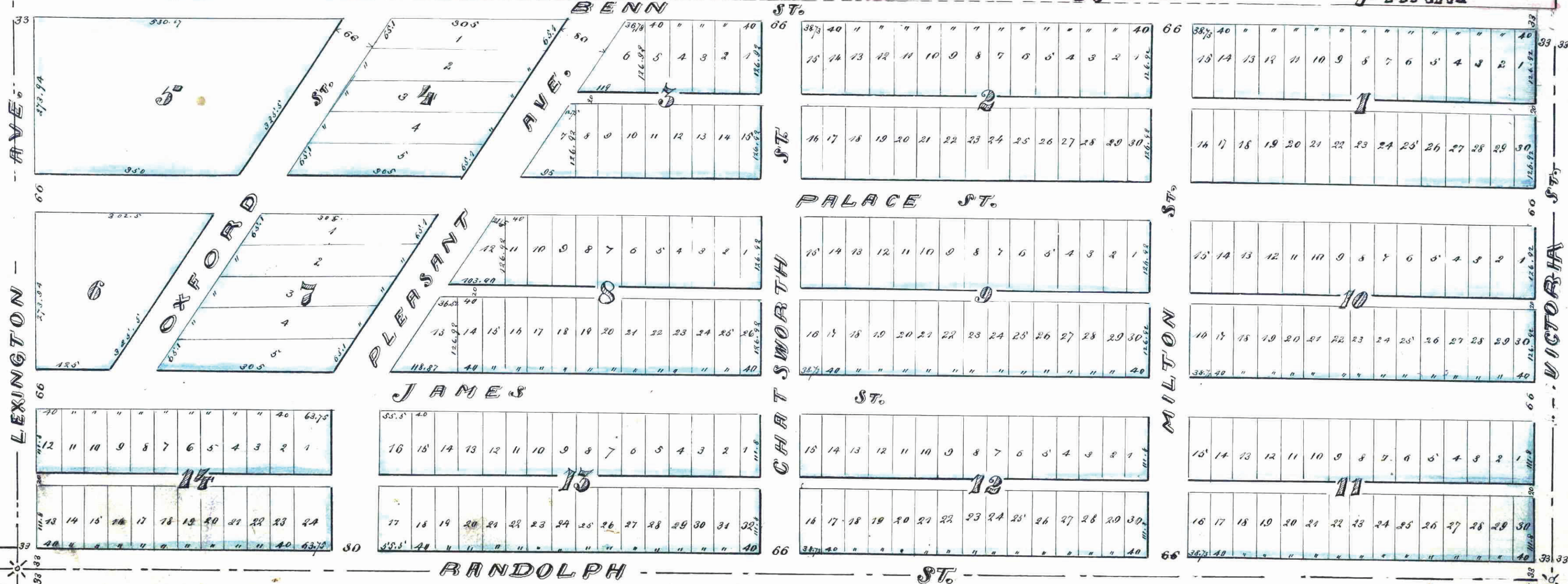


MICHEL AND ROBERTSON'S ADD. FARM



I hereby certify that this is a correct diagram of MICHEL & ROBERTSON'S ADD. described as follows to wit: The South 60 Acres of the N.W. 1/4 of Sec. 11 TOWN 28 N. Range 23 W. of the 4th P.M. as surveyed and platted by me in the months of May and June 1881
 St. Paul
 June 13th 1881
 Ed. Hoenek
 Surveyor

CITY TREASURER'S OFFICE
 ST. PAUL, MINN.
 JUL 12 1881
 ASSESSMENTS PAID.
 J. A. Ramsey
 City Clerk

This plat document is an UNOFFICIAL copy of a Subdivision Plat or Registered Land Survey and is made available for information purposes only.
 To obtain an official copy please contact the Ramsey County Recorder's Office.

Auditors Office Ramsey & Co.
 St. Paul, Minn.
 Taxes Paid this 13th day of July, 1881
 J. J. McCarty
 Co. Auditor
 St. Paul

Accepted
 Bernard Michel
 July 5th 1881
 Bernard Michel
 Engineer
 St. Paul, June 30th 1881.
 Approved, L. W. Rundlett
 City Engineer.

STATE OF MINNESOTA
 COUNTY OF RAMSEY } I the undersigned BERNARD MICHEL proprietor of MICHEL & ROBERTSON'S ADD. being the South 60 Acres of the N.W. 1/4 of Sec. 11 TOWN 28 N. Range 23 W. of the 4th P.M. do hereby certify, that I have caused the same to be surveyed and platted as represented by the above Plat, and give hereby Streets and allies for public use.
 St. Paul
 June 13th 1881
 B. Michel
 Francis Michel
 Michel

State of Minnesota } On this 5th day of July
 County of Ramsey } A.D. 1881 then personally came before me Bernard Michel and Francis Michel his wife the signers and sealers of the foregoing written Certificate and severally acknowledged that they executed the same for the uses and purposes therein expressed.

Witness my hand and official seal
 J. J. Minger, Notary Public
 Ramsey Co. Minn.

Approved
 St. Paul, June 28th 1881
 Wm A Van Slyke, Not Commis
 Chas W. Morris

