

This plat document is an UNOFFICIAL copy of a Subdivision Plat or Registered Land Survey and is made available for information purposes only.

To obtain an official copy please contact the Ramsey County Recorder's Office.



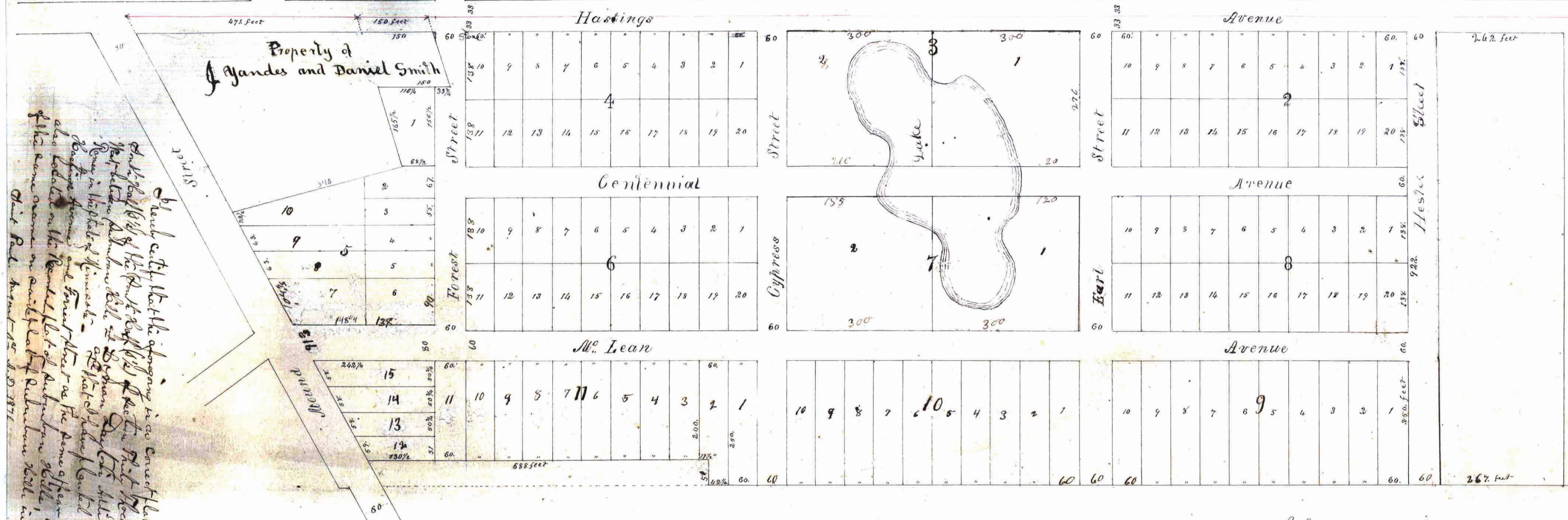
# MCLEAN'S RESERVATION.

Office of Registrar of Deeds  
State of Minnesota  
County of Ramsey

I hereby certify that the annexed plat was filed in this office for record on the 28th day of November 1877 and was duly recorded in Book 16 of Town plats page 28.

Alex Johnston  
Registrar of Deeds

CITY TREASURER'S OFFICE,  
ST. PAUL, MINNESOTA.  
NOV 28 1877  
ASSESSMENTS PAID.



This plat document is an UNOFFICIAL copy of a Subdivision Plat or Registered Land Survey and is made available for information purposes only. To obtain an official copy please contact the Ramsey County Recorder's Office.

State of Minnesota  
County of Ramsey

Be the undersigned Hester McLean widow and J. H. Pollock executor of the last will and testament of the late Nathaniel McLean deceased proprietor of McLean's Reservation described as follows. To wit. Being that tract or parcel of land known as McLean's Reservation adjoining Suburban Hills. Being a part of the south half of section thirty three, Town twenty nine range twenty two. Do hereby certify that we have caused the same to be surveyed and platted as per accompanying Diagram, and we hereby give the streets and avenues for public use.

Witness our hands and seals this 29th day of May 1877  
In presence of James H. Davidson  
Eva H. Tracy

Hester McLean  
J. H. Pollock  
State of Minnesota  
County Ramsey

Office of the City Engr  
St Paul Minn Aug 21 1877  
I certify that the streets in this plat do conform to those of the adjoining additions and that they are properly located  
J. S. Shull City Engineer

On this 29th day of May A.D. 1877 before me personally appeared Hester McLean widow of the late Nathaniel McLean deceased and J. H. Pollock executor of the last will and testament of said Nathaniel McLean deceased to me well known and acknowledged the accompanying Plat of McLean's Reservation and the foregoing Certificate or instrument by them subscribed to be their and each of their voluntary act and deed.

James H. Davidson  
Notary Public  
Ramsey Co Minn

I hereby certify that this is a correct Plat of McLean's Reservation, situated in the south half (1/2) of the south half (1/2) of section thirty three (33), Town twenty nine (29), Range twenty two (22), between Suburban Hills and Lyman Dayton's Addition.

Charles M. Boyle  
County Surveyor  
Saint Paul August 1st A.D. 1876

City Clubs Office  
St Paul Minnesota August 21 1877  
Certify that McLean's Reservation

as shown on this plat was accepted and Adopted by order of the Common Council August 21 A.D. 1877  
J. O. Comor  
City Clerk

Auditor's Office Ramsey County Minn.  
Saint Paul November 22 1877  
J. Lee Davis  
County Auditor  
Taxes paid.