

MURRAY LANE ADDITION PLAT-3

ST. PAUL MINNESOTA

O Indicates Iron Monument

MILNER W. CARLEY & SON
CIVIL ENGINEERS & SURVEYORS

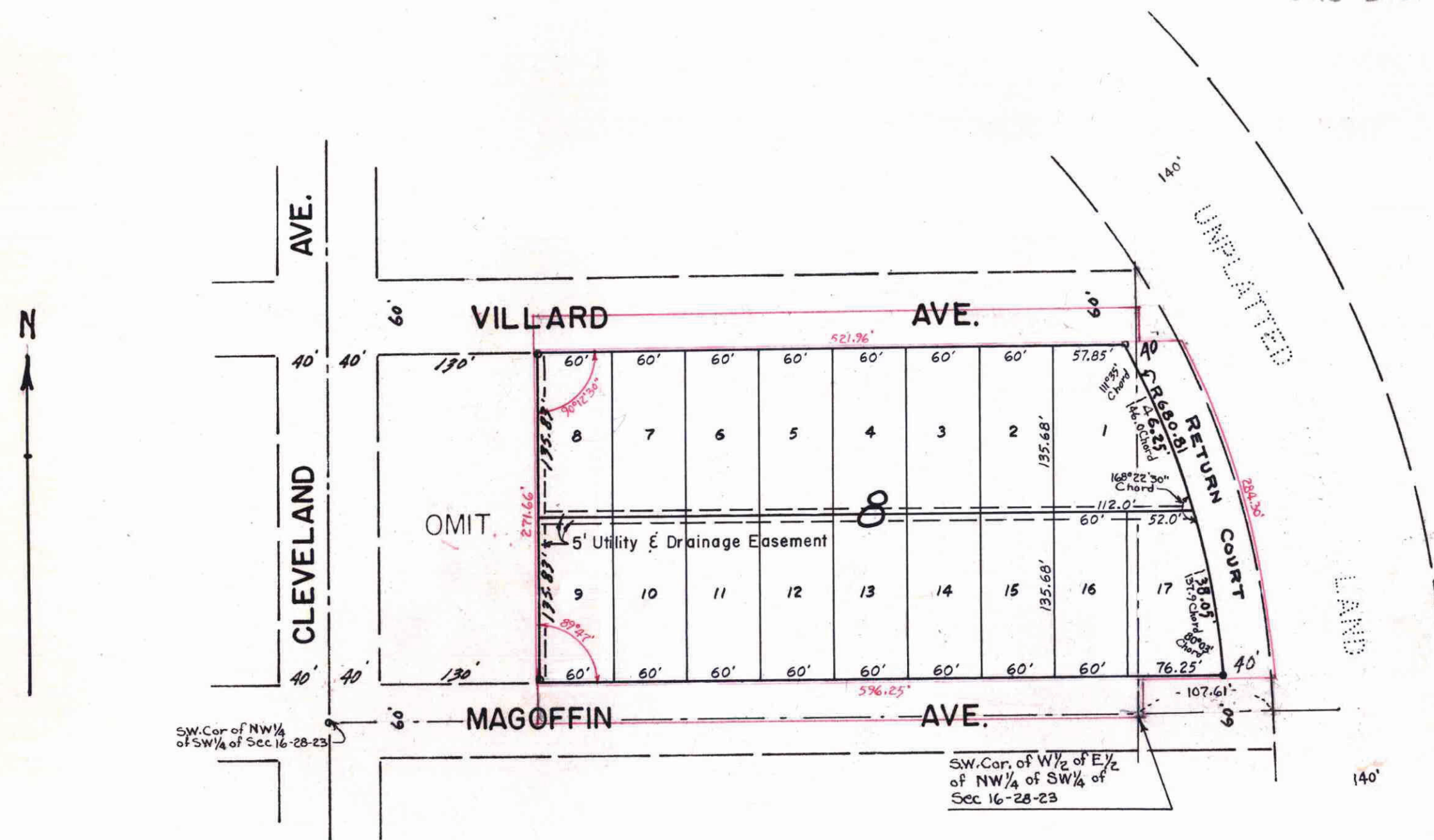
ORG-B18-710

This plat document is an UNOFFICIAL copy of a Subdivision Plat or Registered Land Survey and is made available for information purposes only.

To obtain an official copy please contact the Ramsey County Recorder's Office.



Scale 1 Inch = 100 Feet



This is to certify that we, Associated Contractors Inc. a Minnesota Corporation owners of: Except the West one hundred seventy (170) feet, all that part of the Northwest one quarter (NW 1/4) of the South west one quarter (S W 1/4) of Section Sixteen (16) Town twenty-eight (28) North Range twenty-three (23) West lying North of Magoffin Ave. South of Villard Ave. and Westerly of a line described as follows: Commencing at the S.W. corner of the W 1/2 of the E 1/2 of the NW 1/4 of SW 1/4, thence east 107.61 feet to the point of beginning; thence on a curve to the left of radius 720.81 feet an arc distance of approximately 380 feet, have caused the same to be surveyed and platted and here after known as Murray Lane Addition Plat-3 as shown by this plat and we hereby dedicate to the public and for the public use forever all courts and avenues as shown. Subject to said Avenues.

Witness our hands and seal this 14 day of June A.D. 1954
 By L.A. Murray Vice President
 By G.J. Murray Assistant Secretary

State of Minnesota S.S. On this 14 day of June 1954, before me appeared L.A. Murray and G.J. Murray, who each being duly sworn did say that they are respectively the Vice President and Assistant Secretary of Associated Contractors Inc. a Minnesota corporation, the corporation named in the foregoing instrument and the seal affixed to same instrument is the corporate seal of said corporation, and that said instrument was signed and sealed in behalf of said corporation by authority of its Board of Directors, and said Vice President and said Assistant Secretary acknowledged said instrument to be the free act and deed of said corporation.

Lloyd S. Beal
 Notary Public,
 My Commission expires Aug. 9, 1956

Accepted and approved by the St. Paul City Council this 17 day of August 1954
Joseph P. Chausse
 City Clerk

Taxes for the year 1953 on the lands described herein PAID
 AUG 18 1954
 ELSA M. OBST, Treasurer
 RAMSEY COUNTY, MINNESOTA

TAXES PAID AND TRANSFER ENTERED
 AUG 18 1954
 EUGENE A. MORICK, Auditor

I hereby certify to having surveyed the property described on this plat as Murray-Lane Addition Plat-3 and have placed iron monuments at the corners as shown and the same is correct. There is no low wet ground nor any traveled road or easement on or across same except as shown.

Milner W. Carley
 Registered Surveyor
 Minnesota Certificate No. 855

State of Minnesota ss. On this 20th day of May A.D. 1954 before me the undersigned personally appeared Milner W. Carley to me known to be the person described in and who executed the foregoing instrument and acknowledged that he executed the same as his free act and deed.

Donald J. Carley
 Notary Public, Ramsey County, Minnesota
 My Commission Expires 19

Accepted and approved this 16th day of August A.D. 1954

Herbert West
Abel D. Engstrom
C. D. Forth
Frank D. Marjittella
 Plat Commission
 Commissioner of Public Works

All installments of Assessments due on the within property to date are paid
 AUG 19 1954
 DEPARTMENT OF FINANCE
 ST. PAUL, MINN.
 HOURS OF OFFICE, Com. of Finance

DOCUMENT NUMBER 337030
 CERTIFICATE NUMBER 155119
 BOOK 357 PAGE 419
 STATE OF MINNESOTA ss
 County of Ramsey
 OFFICE OF THE REGISTRAR OF TITLES
 This is to certify that the within instrument was filed in this office at St. Paul on the 26th day of Aug. A.D. 1954 at 4 o'clock P.M.
J. E. Bernhard
 Registrar of Titles
 By E. Z. Amundson
 Deputy

337030