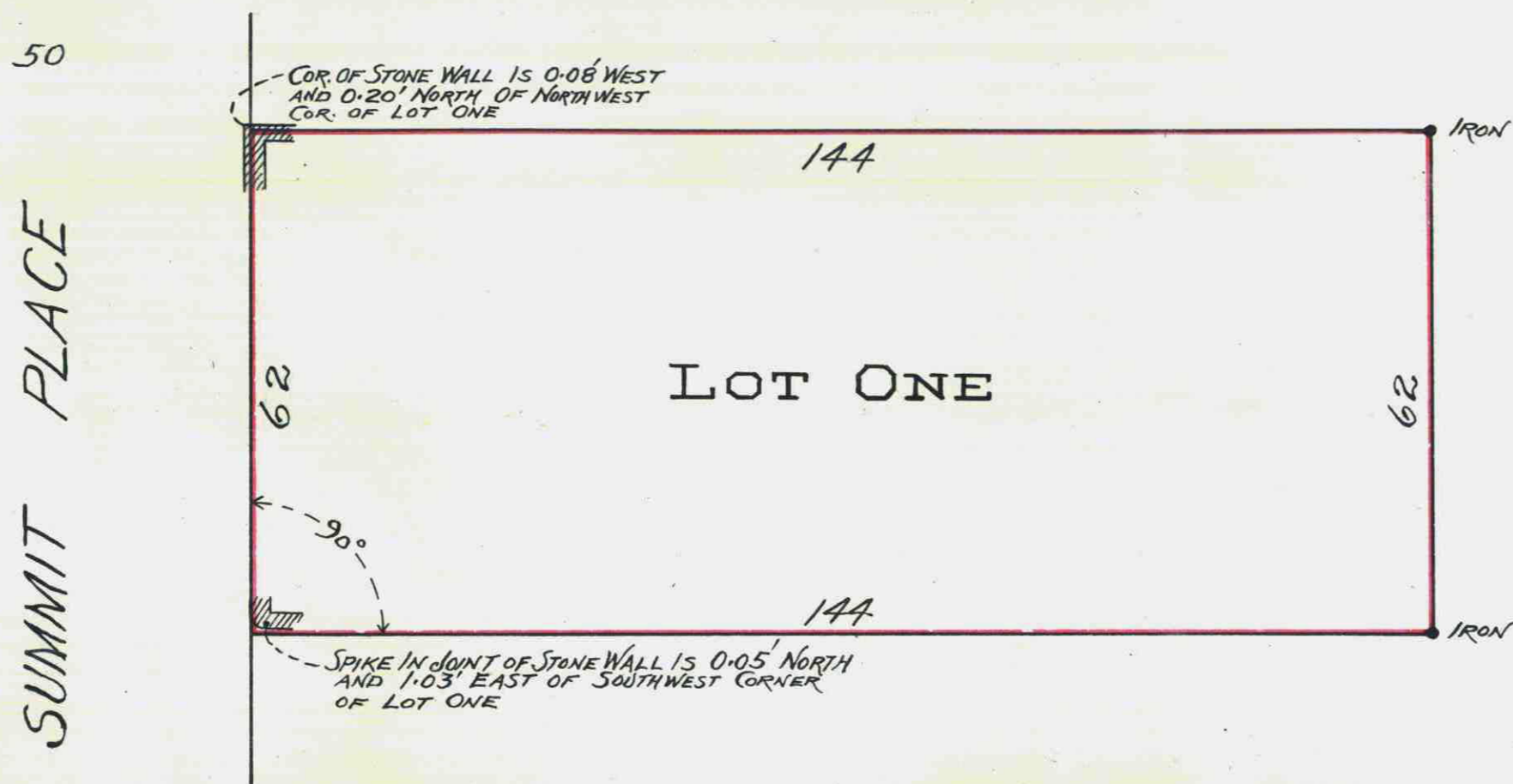


# MATTESON PLACE

ST. PAUL

SCALE, 20 FT. PER INCH.

SURVEYED BY  
FOWBLE & FITZ,  
CIVIL ENGINEERS AND SURVEYORS,  
ST. PAUL



St. Paul, March 25, 1897.  
I hereby certify to having surveyed and plotted the property as described on this map as "MATTESON PLACE ST. PAUL" and have placed iron monuments as shown on this map, and the same is correct.  
J. Henry Fitz SURVEYOR.

State of Minnesota }  
County of Ramsey } On this 26<sup>th</sup> day of March A.D. 1897 before me personally appeared J. Henry Fitz, to me known to be the person described in and who executed the foregoing instrument and acknowledged that he executed the same as his free act and deed.

Chas. M. Matteson  
Notary Public, Ramsey Co., Minn.

This is to certify that S.W. Matteson Estate, (incorporated), proprietor of that part of the SE 1/4 of Sec. 36, T. 29, R. 23 in the City of St. Paul, described as follows:—Beginning at a point on the East line of Summit Place 206 ft. North of the North line of Nelson Ave, thence East at right angles to Summit Place 144 ft., thence North at right angles to last described line 62 ft., thence West at right angles to last described line 144 ft. to Summit Place, thence South along the East line of Summit Place 62 ft. to the point of beginning, had caused the same to be surveyed and plotted and hereafter known as "MATTESON PLACE ST. PAUL" as shown by this plat and hereby dedicates to the public, for public use forever, the street called Summit Place, as herein indicated. Witness our hands and the corporate seal of the above named Corporation, this 26<sup>th</sup> day of March A.D. 1897

In presence of }  
Louis Alberovsky }  
S.W. MATTESON ESTATE  
By Louise Matteson PRESIDENT  
Chas. M. Matteson SECRETARY

State of Minnesota }  
County of Ramsey } On this 4<sup>th</sup> day of June A.D. 1897 before me personally appeared Louise Matteson, who being duly sworn does say that she is the President of the above named Corporation and Chas. M. Matteson who being duly sworn does say that he is the Secretary of the above named Corporation and that the above instrument was signed and sealed in behalf of said Corporation, by authority of its Board of Directors and that the seal attached is the corporate seal of said Corporation and acknowledged that they executed the same as the free act and deed of said Corporation.

Notary Public, Ramsey Co., Minn.

Accepted by the Common Council of the City of St. Paul on the 1<sup>st</sup> day of July A.D. 1897  
Matt Jussler  
CITY CLERK

Accepted and approved this 4<sup>th</sup> day of June A.D. 1897  
J. A. Smith  
PLAT COMMISSIONER  
Geo. Rundlett  
CITY ENGINEER

Taxes for the year 1896 on the lands described herein, paid  
JUL 14 1897  
ST. PAUL, MINN.  
F. E. ELMUND, County Treasurer.

STATE OF MINNESOTA, ss.  
County of Ramsey,  
Office of the Register of Deeds.  
This is to certify that the within instrument was filed for record in this office at St. Paul, on the 23<sup>rd</sup> day of July A. D. 1897 at 10 o'clock A.M., and that the same was duly recorded in Book 17 of said State Pages 28  
Eugene W. Schuchert  
Register of Deeds.  
By \_\_\_\_\_ Deputy.

TAXES PAID AND TRANSFER ENTERED  
JUL 19 1897  
D. M. SULLIVAN,  
County Auditor.

E. J. Auer D. B. Board of Aldermen  
June 15, 1897  
Past of the Assembly  
July 15, 1897

CITY TREASURER'S OFFICE,  
ST. PAUL, MINN.  
JUL 20 1897  
Assessments Paid  
CITY TREAS.