

PINEWOOD TERRACE No. 2 RAMSEY COUNTY MINNESOTA

Scale-1 inch = 100 feet
o Indicates Iron Monument

R. C. Wolfgram
Surveyor

I hereby certify to having surveyed the property described on this plat as Pinewood Terrace No. 2 and have placed iron monuments at the corners shown and the same is correct.
There is no low wet ground nor any traveled road or easement on or across same except as shown.

R. C. Wolfgram
Registered Surveyor
Minnesota Certificate No. 1340

State of Minnesota }
County of Ramsey } s.s.

On this 24th day of October A.D. 1950 before me the undersigned personally appeared R.C. Wolfgram to me known to be the person described in and who executed the foregoing instrument and acknowledged that he executed the same as his free act and deed.

J. A. Eastman
Notary Public, Ramsey County, Minnesota
My Commission expires 6-2-54

This is to certify that Suburban Properties, Inc., a Minnesota corporation owner of all that part of the Southeast Quarter of Northwest Quarter of Section Eight (8), Township 30 North, Range 23 West, lying Northeast of the center line of Trunk Highway No. 10, subject to public rights in the South 33 feet thereof for County Road H2, and subject to the rights of State of Minnesota in the South-westerly 150 feet thereof for Trunk Highway No. 10, according to the government survey thereof, has caused the same to be surveyed and platted and hereafter known as Pinewood Terrace No. 2 as shown by this plat, and hereby dedicates to the public and for the public use forever all drives, roads, courts, streets, highways and drainage easements as shown.

Witness our hands and seal this 26th day of OCTOBER A.D. 1950
In presence of

Paul L. Videman By *John G. Eastman*
Suburban Properties, Inc. Its President
James R. Hyatt By *J. Segal*
Its Secretary

State of Minnesota }
County of Ramsey } s.s.

On this 26th day of October A.D. 1950 before me appeared John G. Eastman and J. Segal who each being duly sworn did say that they are respectively the President and Secretary of Suburban Properties Inc., a Minnesota corporation, the corporation named in the foregoing instrument and the seal affixed to same instrument is the corporate seal of said corporation and that said instrument was signed and sealed in behalf of said corporation by authority of its Board of Directors, and said President and said Secretary acknowledged said instrument to be the free act and deed of said corporation.

R. C. Videman
Notary Public, Ramsey County, Minnesota
My Commission expires Nov. 8, 1956

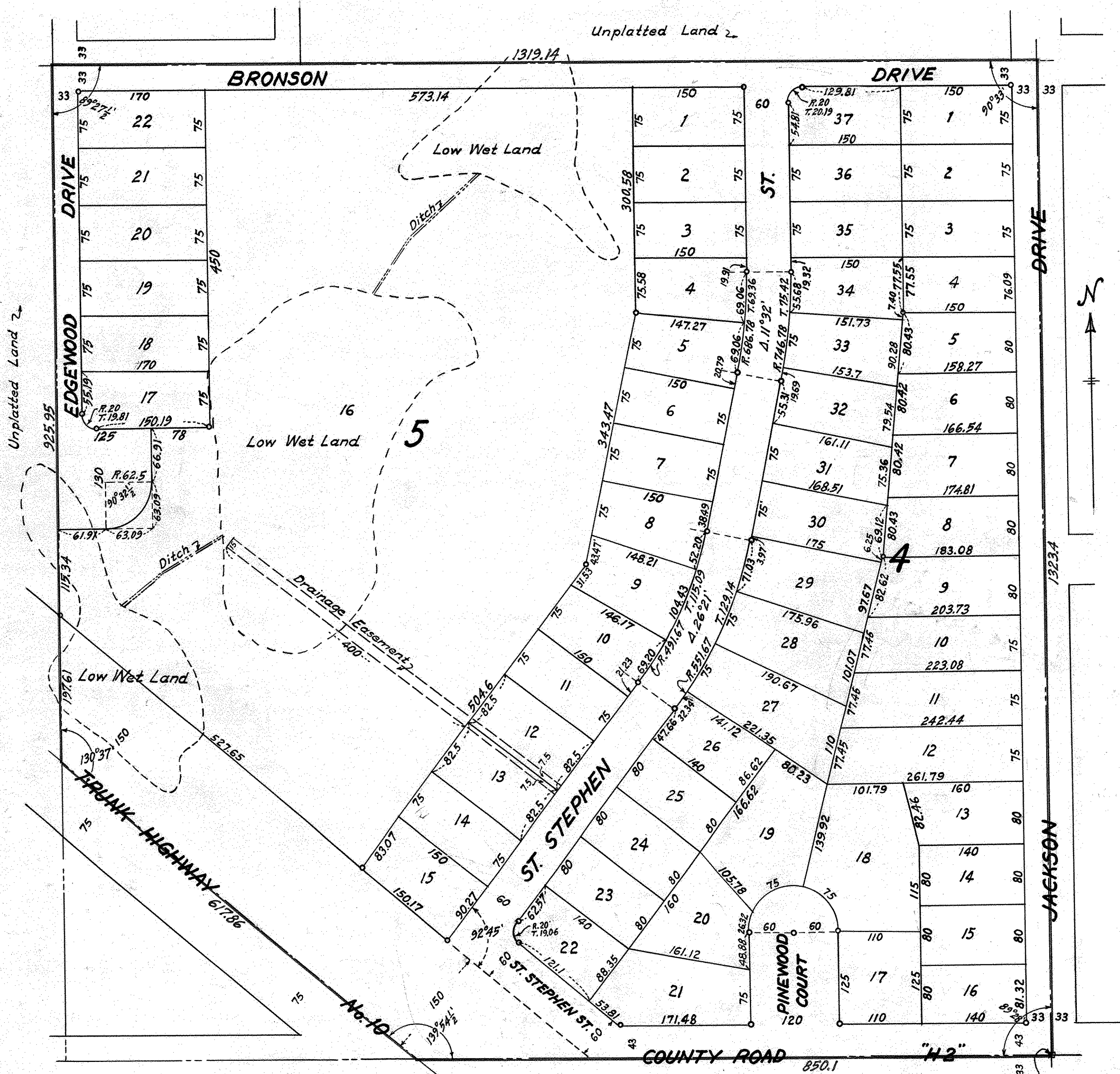
Accepted and approved this 10th day of November A.D. 1950

George H. Herrod
Herbert S. West } Plat Commission
Alva L. Crampton
Milton Rosen Commissioner of Public Works

Accepted and approved by the Township Board of Mounds View Township
J. L. Ober Clerk of Township

Accepted and approved by the Board of County Commissioners this 15 day of November
A.D. 1950, Ramsey County, Minnesota
Agnes Annand County Auditor, Ramsey County, Minnesota

Recorded Nov. 17, 1950
Torrens # 287210



S.E. Cor. of N.W. 1/4 of
Sec. 8, T. 30 N., R. 23 W.