

This plat document is an UNOFFICIAL copy of a Subdivision Plat or Registered Land Survey and is made available for information purposes only. To obtain an official copy please contact the Ramsey County Recorder's Office.

Office City Eng. St. Paul, Aug 11 1894. I certify that I have examined this plat of Beaupre & Kelly's Addition to Saint Paul, and find that the streets thereon correspond with the streets of the surrounding additions.

State of Minnesota, County of Ramsey.

We the undersigned proprietors of Beaupre & Kelly's Addition to Saint Paul, Ramsey Co. Minnesota, do hereby certify that the foregoing plat was surveyed and plotted by us for city purposes, and we do hereby give for public use, the streets as designated therein.

I certify that Beaupre & Kelly's addition as represented on this Plat was accepted by the Common of this City on the 4 day of August 1894. Data at Paul, Aug 6 1894.

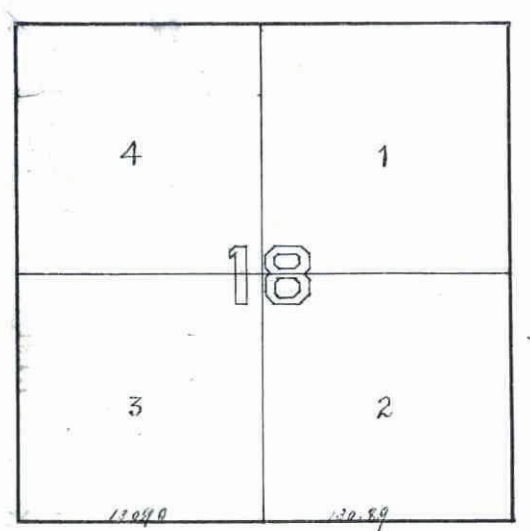
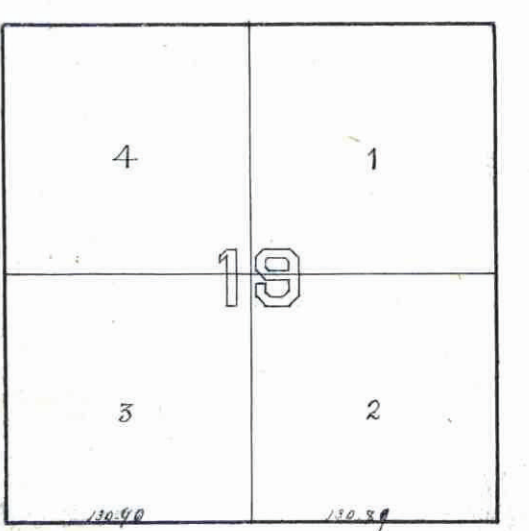
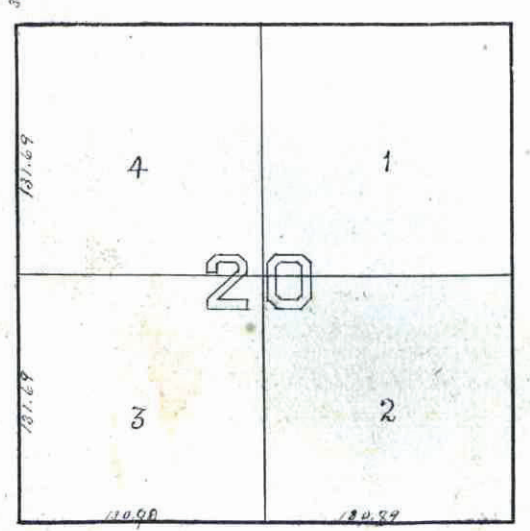
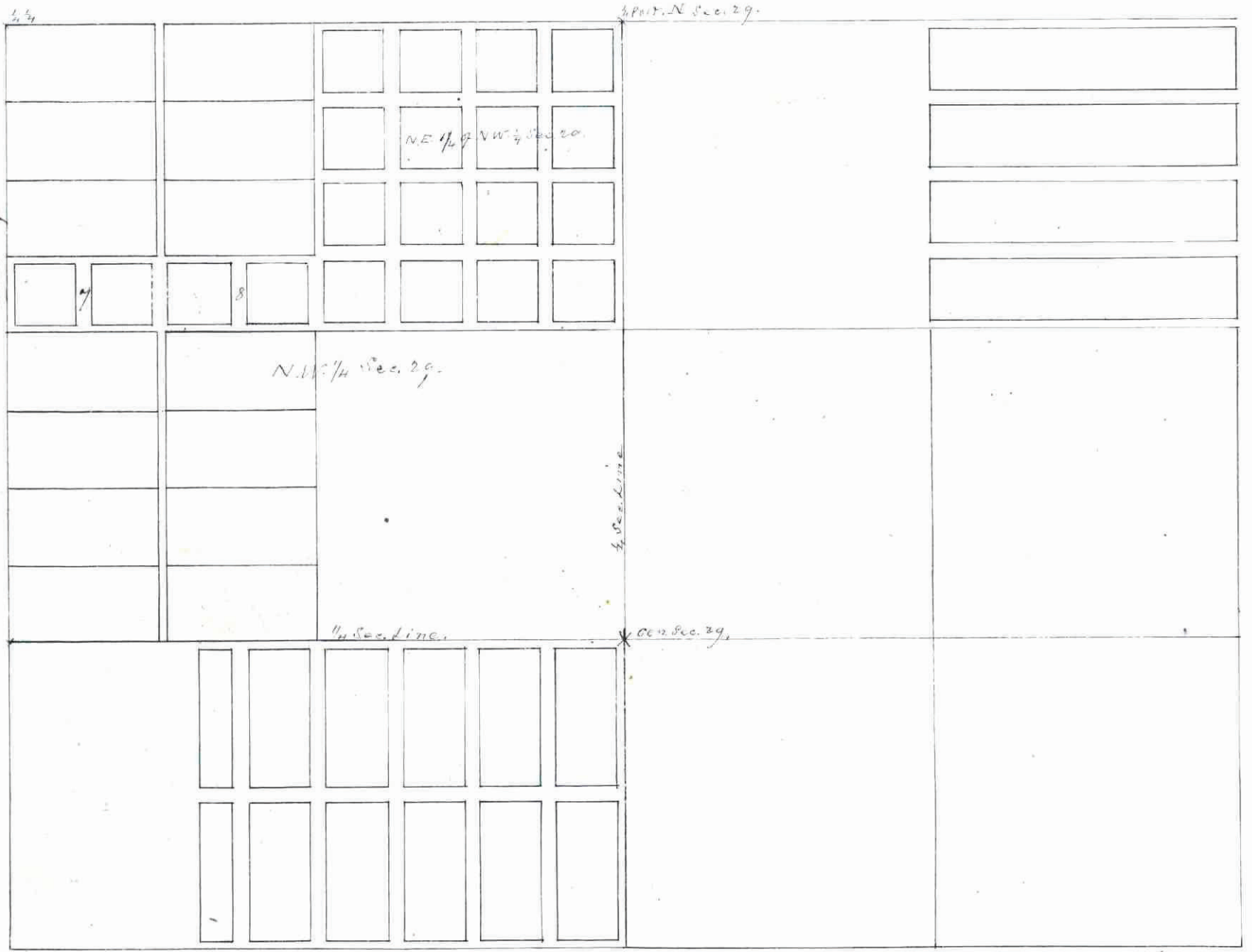
J. M. Wellman City Engineer

Witness our hands and seals, this 4th day of August 1894. Beaupre & Kelly

Theodore Sander
Henry Ogorman Deputy

BEAUPRE & KELLY'S ADDITION TO SAINT PAUL.

Auditor Office Ramsey Co. Minn.
David Paul Clerk Aug 7 1894.
Days paid and transfer made this day. D. Lee Davis
Alvin S. P. Co. auditor



CLARK

