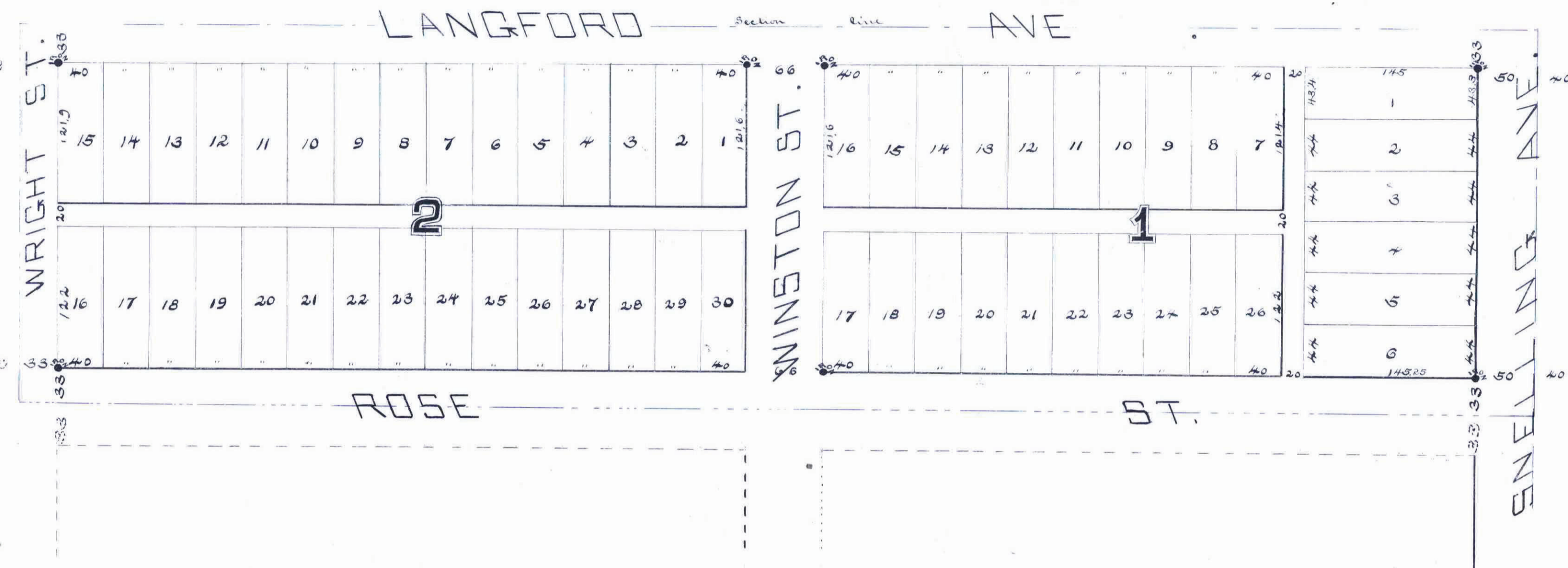
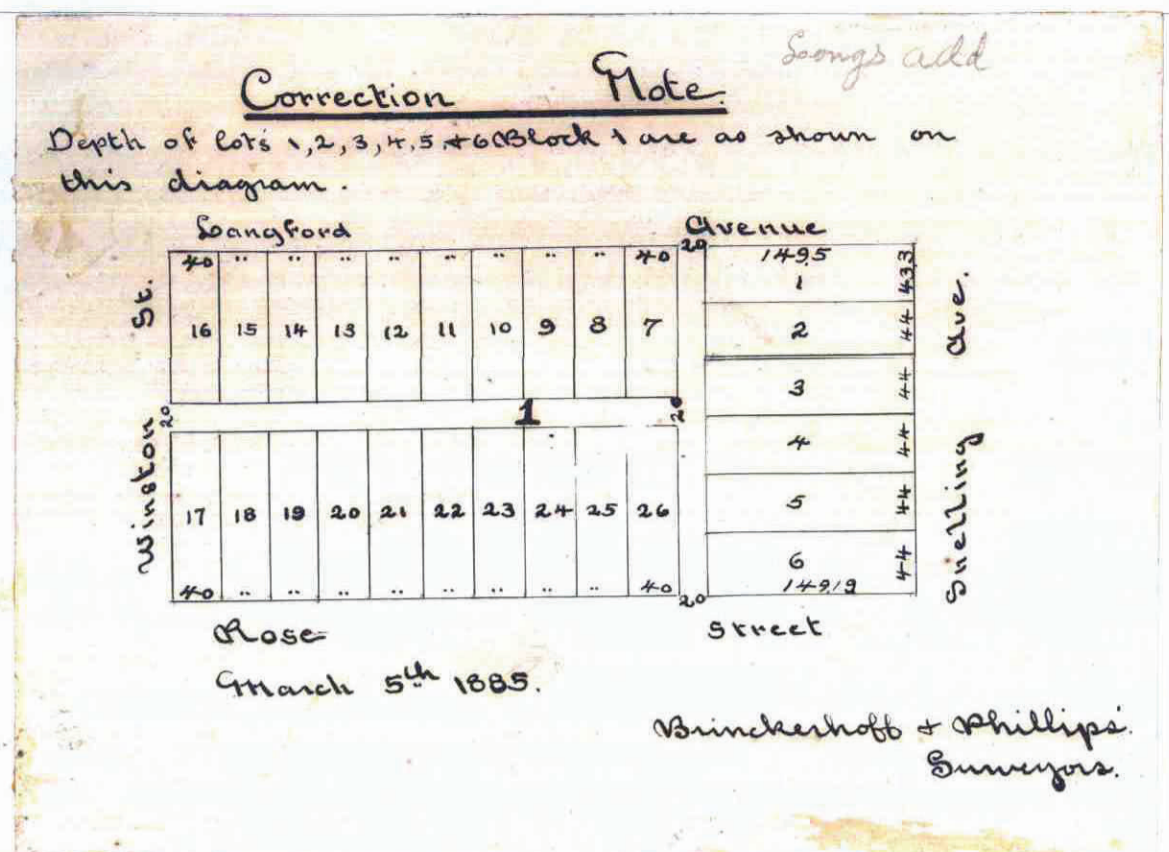


LONG'S ADDITION. TO ST. PAUL MINN.



This plat document is an UNOFFICIAL copy of a Subdivision Plat or Registered Land Survey and is made available for information purposes only.

To obtain an official copy please contact the Ramsey County Recorder's Office.

STATE OF MINNESOTA,
County of Ramsey,
OFFICE OF THE REGISTER OF DEEDS.
This is to certify that the within instrument was filed for Record in this office, at St. Paul, on the 23rd day of February, A. D. 1885 at 5 o'clock P. M., and that the same was duly recorded in Book W of Plate pages 16.

R. C. Wiley
Register of Deeds.

Approved on this 23rd day of February A. D. 1885.
 J. P. Holson }
 James Starky } Plat Commission.

We hereby certify to having surveyed and platted the property described on this map as Long's Addition to St. Paul, Minnesota and have placed iron monuments at the block corners as shown on this plat, and that the same are correct.

Winchesterhoff + Phillips,
Surveyors.

State of Minnesota,
County of Ramsey } On this 23rd day of February 1885 personally came before me
 Winchesterhoff + Phillips to me well known to be the identical persons who executed the foregoing instrument and who acknowledge the same to be their free act and deed for the uses and purposes therein expressed.

J. P. Winchesterhoff
Notary Public,
Ramsey County
Minn.

We the undersigned owners of the North (1/2) one half of the North (1/2) one half of the North East (1/4) quarter of the North East (1/4) of Section 28 Range 23 Township 29 do hereby certify to having caused the same to be surveyed and platted as Long's addition to St. Paul Minnesota as is herein indicated, and we do hereby give and dedicate to the public and for the public use forever all the streets and alleys as are on this plat laid out and designated.

In witness whereof we have hereunto set our hands and seals on this 31st day of January 1885.

In presence of:
 Daniel Murphy
 J. Graham

E. C. Long
 Mary A. Long
 Nathaniel Winchesterhoff

State of Minnesota,
County of Ramsey } on this 31st day of January 1885 before me personally came E. C. Long
 and Mary A. Long his wife to me well known to be the identical persons who executed the foregoing instrument and who acknowledge the same to be their free act and deed for the uses and purposes therein expressed.

Daniel Murphy
Notary Public,
Ramsey County.

Taxes paid and transfers entered on this 23rd day of February 1885

James O'Brien
County Auditor
Ramsey Co.