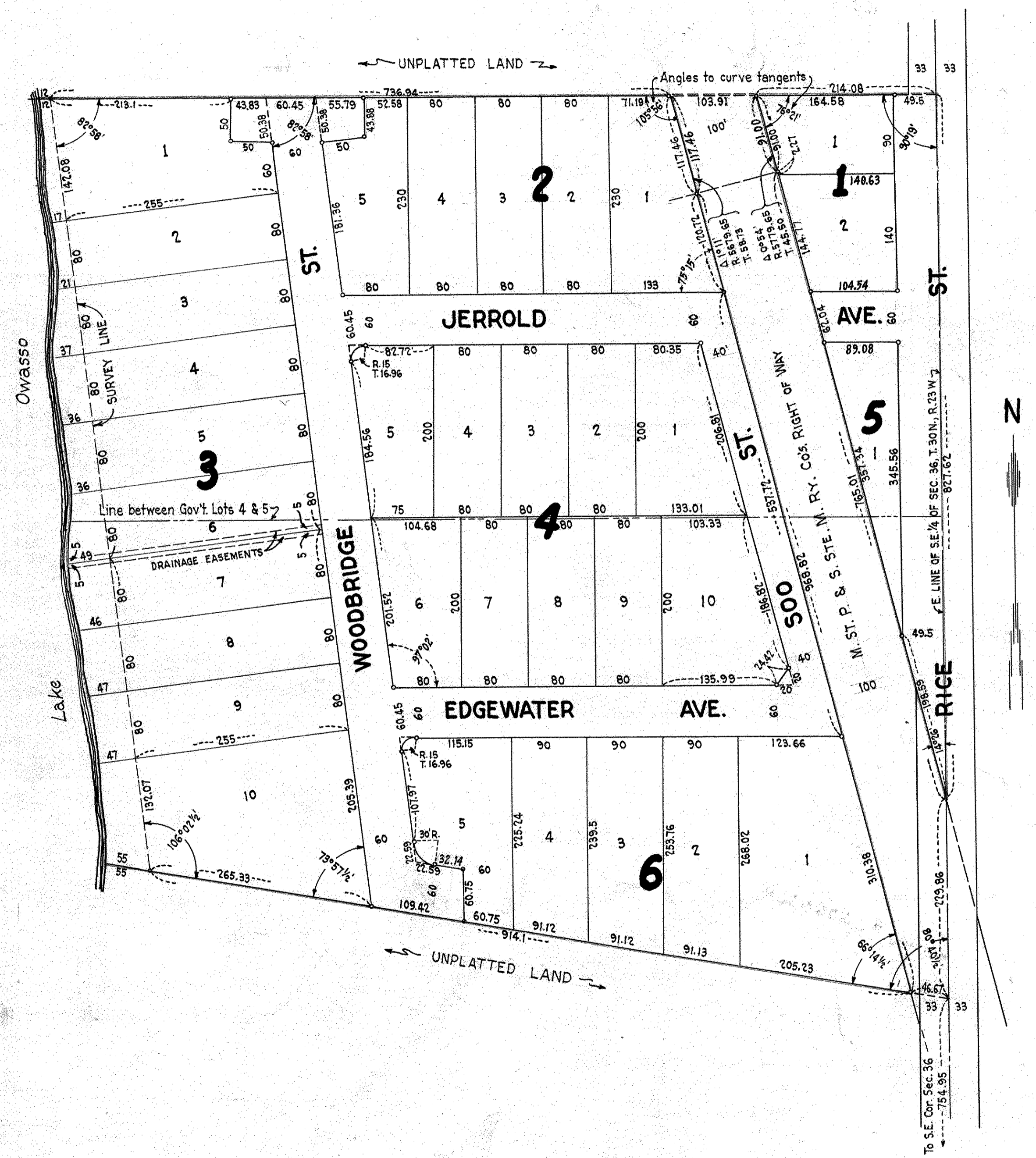


# EAST SHORE PARK RAMSEY COUNTY, MINN.

Scale - 1 inch = 100 feet  
° Indicates iron monument

R. C. Wolfgram  
Surveyor



This is to certify that CITIZENS ICE & FUEL COMPANY, a South Dakota corporation, duly licensed to transact business in the State of Minnesota, owner of that part of Government Lot 4, Section 36, T.30 N., R. 23 W. lying South of a line running Westerly from the East line of said Section with a Southwesterly angle of 90° 19' to said East line from a point on said East line distant 1812.43 feet North of the Southeast corner of said Section, and that part of Government Lot 5 in said Section 36 lying Northerly of a line running Northwesterly at an angle of 80° 40 1/2' to said East line of Section 36 from a point on said East line distant 754.95 feet North of the Southeast corner of said Section, except from both afore described tracts the M. St. P. & S. Ste. M. Ry. Co's. right of way, has caused the same to be surveyed and platted and hereafter known as East Shore Park as shown by this plat, and hereby dedicates to the public and for the public use forever all streets, avenues and drainage easements as shown.

Witness our hands and seal this 26th day of June A. D. 1948.

In presence of:  
Lillian M. Gardelin  
May Todd

CITIZENS ICE & FUEL COMPANY  
 By W. C. Fraser  
 Its President  
 By Joseph Milton  
 Its Secretary

State of Minnesota } S.S.  
 County of Ramsey }  
 On this 26 day of June A. D. 1948 before me appeared William C. Fraser and Joseph Milton, who each being duly sworn did say that they are respectively the President and Secretary of CITIZENS ICE & FUEL COMPANY, a South Dakota corporation, the corporation named in the foregoing instrument and the seal affixed to same instrument is the corporate seal of said corporation, and that said instrument was signed and sealed in behalf of said corporation by authority of its Board of Directors, and said President and said Secretary acknowledged said instrument to be the free act and deed of said corporation.

Lillian M. Gardelin  
 Notary Public, Ramsey County, Minnesota  
 My Commission expires Jan 16 1955

Accepted and approved this 24th day of September A. D. 1948.

George H. Harwood  
Harbert S. West  
Alvah D. Beaumont  
Milton Green

Plat Commission  
 Commissioner of Public Works

Accepted and approved by the Township Board of Mounds View Township.

Janice L. Bueker  
 Clerk of Township

Accepted and approved by the Board of County Commissioners this 27 day of September A. D. 1948, Ramsey County, Minnesota.

Lyne Parnum  
 County Auditor, Ramsey County, Minnesota.

I hereby certify to having surveyed the property described on this plat as East Shore Park and have placed iron monuments at the corners as shown and the same is correct. There is no low wet ground nor any traveled road or easement on or across same except as shown.

R. C. Wolfgram  
 Registered Surveyor  
 Minnesota Certificate No 1340

State of Minnesota } S.S.  
 County of Ramsey }  
 On this 28 day of June A. D. 1948 before me personally appeared R. C. Wolfgram to me well known and acknowledged that he executed the foregoing certificate as his own free act and deed.

Lillian M. Gardelin  
 Notary Public, Ramsey County, Minn.  
 My commission expires Jan 16 1955