

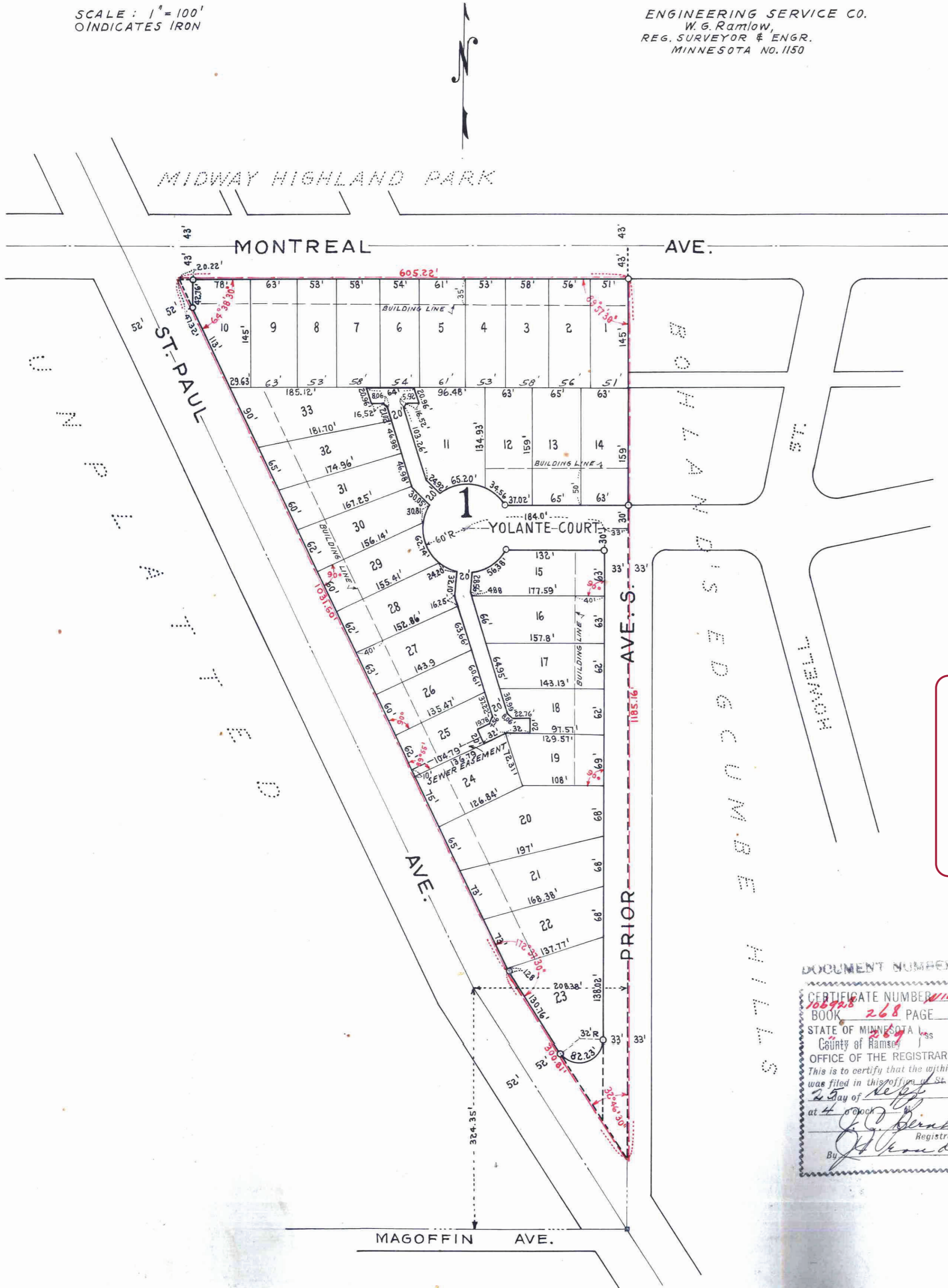
BORDNER'S WEST VIEW No.1

ST. PAUL MINN.

SCALE: 1" = 100'
INDICATES IRON

ENGINEERING SERVICE CO.
W. G. Ramlow,
REG. SURVEYOR & ENGR.
MINNESOTA NO. 1150

orig B12 P13



I hereby certify to having surveyed the property described on this plat as "BORDNER'S WEST VIEW No.1" and have placed irons at the corners as shown and the same is correct. There is no low, wet ground nor any traveled road or easement on or across same except as shown.

W. G. Ramlow
REG. SURVEYOR & ENGR.
MINNESOTA NO. 1150

State of Minnesota } S.S. On this 3rd day of August, A.D. 1946 before me the undersigned
County of Ramsey } personally appeared W.G. Ramlow, to me known to be the person described
in and who executed the foregoing instrument and acknowledged that he executed the same
as his free act and deed.

Sylvia L. Long
Notary Public Ramsey County, Minn.
My Commission expires May 3, 1952

This is to certify that we E. W. Wylie and R. J. Wylie, President and Secretary respectively of the E. W. Wylie, Inc. a Minnesota Corporation, owners of (except Montreal Ave.) that part north-easterly of St. Paul Ave. of the east quarter (E $\frac{1}{4}$) of the northwest quarter (NW $\frac{1}{4}$) of southwest quarter (SW $\frac{1}{4}$) also the west half (W $\frac{1}{2}$) of the northeast quarter (NE $\frac{1}{4}$) of northwest quarter (NW $\frac{1}{4}$) of southwest quarter (SW $\frac{1}{4}$) of Section sixteen (16) Township twentyeight (28) north, Range twenty-three (23) west have caused the same to be surveyed and platted and hereafter known as BORDNER'S WEST VIEW No.1, St. Paul, Minn., as shown by this plat, and hereby dedicate to the Public and for the public use forever all Sewer Easements, Avenues, Alleys and Courts, as shown, reserving to the State of Minnesota, in trust for the taxing districts concerned, all minerals and mineral rights, as provided in Section 10, Chapter 386, laws of 1935.

Witness our hands and seal this 3rd day of August, 1946 E. W. Wylie, Inc.

In presence of
E. W. Wylie, Inc. President
R. J. Wylie Secretary

State of Minnesota } S.S. On this 3rd day of August, A.D. 1946 before me the undersigned
County of Ramsey } personally appeared E. W. Wylie and R. J. Wylie, who each being duly sworn
did say that they are respectively the President and Secretary of the E. W. Wylie, Inc. a Minnesota Corporation, the Corporation named in the foregoing instrument and the seal affixed to same instrument is the corporate seal of said Corporation, and that said instrument was signed and sealed in behalf of said Corporation by authority of its Board of Directors, and said President and Secretary acknowledged said instrument to be the free act and deed of said Corporation.

Sylvia L. Long
Notary Public Ramsey County, Minn.
My Commission expires May 3, 1952

This plat document is an UNOFFICIAL copy of a Subdivision Plat or Registered Land Survey and is made available for information purposes only.

To obtain an official copy please contact the Ramsey County Recorder's Office.

Accepted and approved this 10th day of September, 1946

George W. Harwood
Herbert J. West
Alfred W. Carlson
Sylvia L. Long
Plat Commissioners
Commissioner of Public Works

Accepted by the Council, Sept 10, 1946
Approved, Sept 10, 1946

W. T. Starnes
City Clerk

Accepted and approved by the St. Paul City Planning Board.
Dorothy J. Lavelle
Secretary

DOCUMENT NUMBER 235907
CERTIFICATE NUMBER 106918
BOOK 268 PAGE 112
STATE OF MINNESOTA
County of Ramsey
OFFICE OF THE REGISTRAR OF TITLES
This is to certify that the within instrument was filed in this office at St. Paul on the 2nd day of Sept. A. D. 1946
at 4 o'clock P. M.
By J. R. Bernhard
Registrar of Titles
By J. R. Bernhard
Deputy

All Installments of Assessments due on the within property to date are paid
SEP 13 1946
DEPARTMENT OF FINANCE
ST. PAUL, MINN.
JOHN S. FINDEAN, COM'D. FINANCE
By Sylvia L. Long

TAXES PAID AND TRANSFER ENTERED
SEP 13 1946
EUGENE A. MONICK, Auditor
RAMSEY COUNTY, MINNESOTA
By John S. Findean

Taxes for the year 1945 on the lands described herein PAID
SEP 13 1946
ELSA W. OBST, Treasurer
RAMSEY COUNTY, MINNESOTA
By Sylvia L. Long

235907