

TAYLOR'S WHEELLOCK ADDITION

ST. PAUL, MINNESOTA

SECTION 24, TOWNSHIP 29, RANGE 23 SURVEYED by FIRMINGER & PURTELL

956646 ^{64c}

I HEREBY CERTIFY TO HAVING SURVEYED THE PROPERTY DESCRIBED ON THIS PLAT AS TAYLOR'S WHEELLOCK ADDITION, AND HAVE PLACED IRONS AT THE CORNERS AS SHOWN AND THE SAME IS CORRECT. THERE IS NO LOW WET GROUND NOR ANY TRAVELED ROAD OR EASEMENT ON OR ACROSS SAME EXCEPT AS SHOWN.

STATE OF MINNESOTA } ss.
COUNTY OF RAMSEY }
ON THIS 15th DAY OF Nov. A.D. 1939 BEFORE ME PERSONALLY APPEARED H.T. PURTELL TO ME WELL KNOWN AND ACKNOWLEDGED THAT HE EXECUTED THE FOREGOING CERTIFICATE AS HIS OWN FREE ACT AND DEED.

H.T. PurteLL
Registered Surveyor, Minnesota Certificate No. 1203

Caroline G. W. O'Brien
Notary Public, Ramsey County, Minnesota
My Commission expires Feb. 22, 1945

THIS IS TO CERTIFY THAT DULUTH & VIRGINIA REALTY COMPANY, A MINNESOTA CORPORATION, OWNER OF THAT PART OF LOT 17, COTTAGE HOMES LYING NORTHWEST OF WHEELLOCK PARKWAY HAS CAUSED THE SAME TO BE SURVEYED AND PLATTED AND HEREAFTER KNOWN AS TAYLOR'S WHEELLOCK ADDITION, SAINT PAUL, MINNESOTA, AS SHOWN BY THIS PLAT, AND HEREBY DEDICATE TO THE PUBLIC AND FOR THE PUBLIC USE FOREVER ALL STREETS, AVENUES, ALLEYS, PARKS AND BOULEVARDS AS SHOWN.

IN PRESENCE OF
Wesley H. Mitchell
E. J. McMillan

DULUTH & VIRGINIA REALTY COMPANY
By *E. J. McMillan* President
E. Rundholm Secretary

STATE OF MINNESOTA } ss.
COUNTY OF ST. LOUIS }
ON THIS 30th DAY OF October, 1939, BEFORE ME APPEARED A.C. GILLETTE AND E. SUNDHOLM, WHO EACH BEING DULY SWORN DID SAY THAT THEY ARE RESPECTIVELY THE PRESIDENT AND SECRETARY OF DULUTH & VIRGINIA REALTY COMPANY, A MINNESOTA CORPORATION, THE CORPORATION NAMED IN THE FOREGOING INSTRUMENT AND THE SEAL AFFIXED TO SAME INSTRUMENT IS THE CORPORATE SEAL OF SAID CORPORATION, AND THAT SAID INSTRUMENT WAS SIGNED AND SEALED IN BEHALF OF SAID CORPORATION BY AUTHORITY OF ITS BOARD OF DIRECTORS, AND SAID PRESIDENT AND SAID SECRETARY ACKNOWLEDGED SAID INSTRUMENT TO BE THE FREE ACT AND DEED OF SAID CORPORATION.

E. J. McMillan
Notary Public, St. Louis County, Minnesota
My Commission expires Nov. 1, 1939

ACCEPTED AND APPROVED THIS 2 DAY OF November 1939

George W. Howard
Alfred W. Woodruff
Howard A. Hodgins
William Roue
PLAT COMMISSIONERS
COMMISSIONER OF PUBLIC WORKS

ACCEPTED BY THE COUNCIL Nov 3rd 1939
APPROVED Nov 2nd 1939
W. H. Peterson
City Clerk

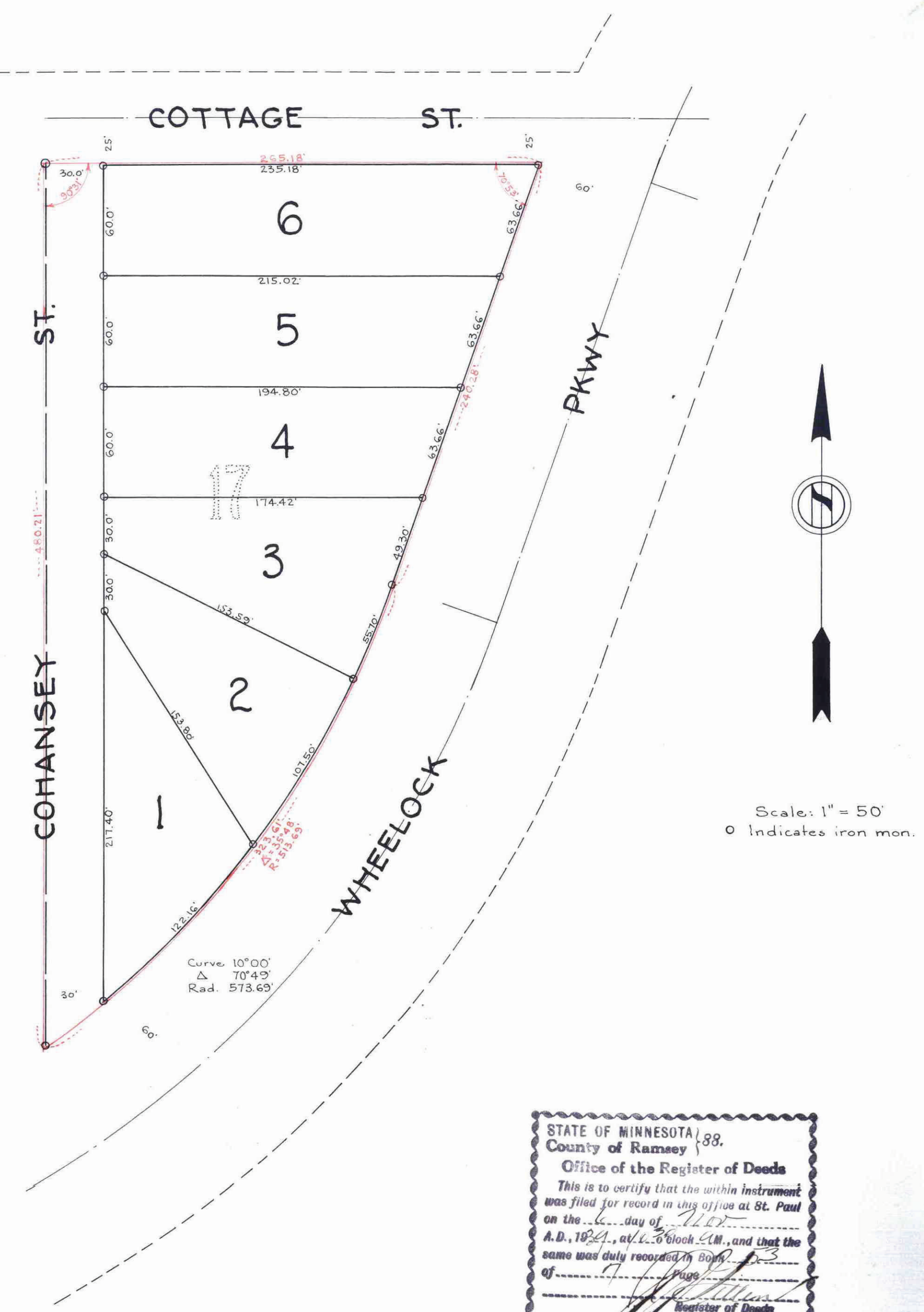
ACCEPTED AND APPROVED BY THE ST. PAUL CITY PLANNING BOARD
Secretary

Taxes for the year 1938 on the lands described within PAID
NOV - 4 1939
ELSA M. OBST, Treasurer
RAMSEY COUNTY, MINN.
Per *E. Rundholm*

This plat document is an UNOFFICIAL copy of a Subdivision Plat or Registered Land Survey and is made available for information purposes only.
To obtain an official copy please contact the Ramsey County Recorder's Office.

TAXES PAID AND TRANSFER ENTERED
NOV - 4 1939
EUGENE A. AUSTICK, Auditor
RAMSEY COUNTY, MINN.
By *Eugene A. Austick*

All Installments of Assessments due on the within property to date are paid
NOV 4 - 1939
DEPARTMENT OF FINANCE
ST. PAUL, MINN.
JURIN S. FINDLAN, COM' R FINANCE
By *J. Findlan*



STATE OF MINNESOTA 1888
County of Ramsey
Office of the Register of Deeds
This is to certify that the within instrument was filed for record in this office at St. Paul on the 15th day of Nov. A.D. 1939, at L. 6 block C.M., and that the same was duly recorded in Book 13 of Page 3
Caroline G. W. O'Brien
Register of Deeds
By *Caroline G. W. O'Brien* Deputy

956646