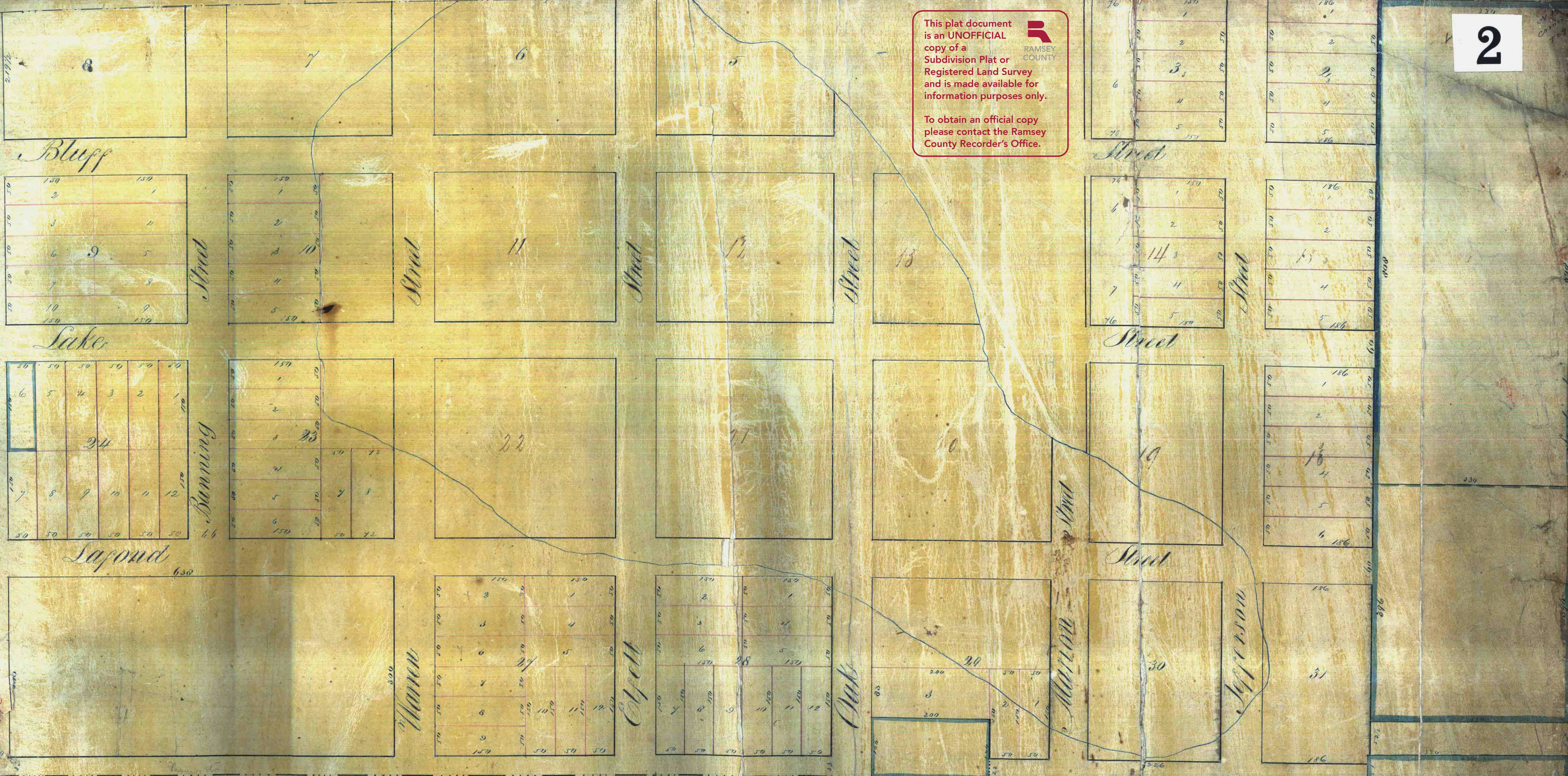


This plat document is an UNOFFICIAL copy of a Subdivision Plat or Registered Land Survey and is made available for information purposes only. To obtain an official copy please contact the Ramsey County Recorder's Office.



I hereby certify that the above is a correct plat of the lands added to Saint Paul as surveyed by me in the year 1857 for James G. Lafond  
Geo. W. Warren  
St. Paul Aug 15 1857  
Geo. W. Warren  
Clerk Ramsey Co

Benjamin Lafond, proprietor of Lafond's addition to Saint Paul, Minnesota, do hereby certify that he claims to be laid out into Streets, Blocks and Lots as here depicted to the end that the same may be recorded as the same streets, and do hereby donate the same therein to the public for their use forever  
Benjamin Lafond  
marks

Lafond's  
Saint Paul  
- Addition to -

Boundary of Minnesota  
County of Ramsey  
Before me this 20th day of August 1857  
I, the undersigned, a Notary Public in and for the State of Minnesota, personally appeared Benjamin Lafond, the Clerk of said County, who being duly sworn, depose and testify that the foregoing plat of said addition is a true and correct copy of the same as the same was laid out and recorded in the books of said County, and that he is duly qualified to perform the duties of a Notary Public in and for the State of Minnesota.  
Notary Public  
1857



Office of Reg. Recorder  
Ramsey Co. Minn.  
I hereby certify  
this map is a true and correct  
copy of the original  
submitted on the 15th day  
of August 1857 and is  
correctly drawn  
J. S. [Signature]