

827818

56

This plat document is an UNOFFICIAL copy of a Subdivision Plat or Registered Land Survey and is made available for information purposes only.

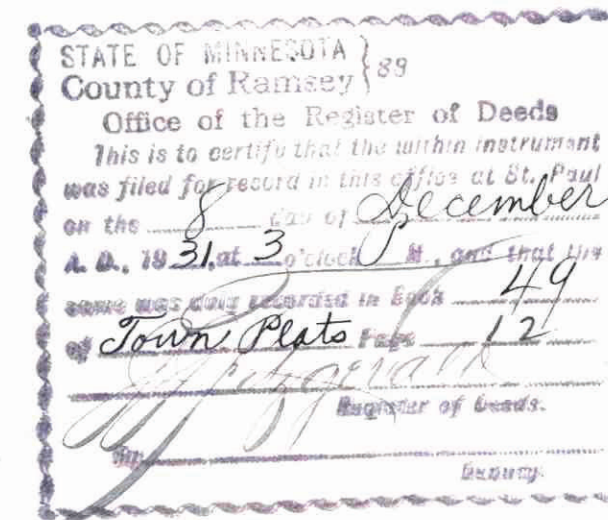


To obtain an official copy please contact the Ramsey County Recorder's Office.

# NETZEL'S SUBDIVISION

Jens Pedersen Surveyor.

o Indicates iron  
Scale 20 Feet per inch.



I hereby certify to having surveyed the property described on this plat as Netzel's Subdivision, and have placed irons at the corners as shown, and the same is correct.

There is no low wet ground nor any traveled road or easement on or across same, except as shown.

Jens Pedersen  
Surveyor.

State of Minnesota }  
County of Ramsey }  
On this 28<sup>th</sup> day of OCTOBER, A.D. 1931  
before me personally appeared  
Jens Pedersen, to me well known and acknowledged that  
he executed the foregoing certificate as his own free act and deed.

Notary Public, Ramsey Co., Minn.  
My Commission expires, Dec. 7, 1932

This is to certify that William E. Netzel and Kate S. Netzel, his wife, Stafford L. Oberg and Edith R. Oberg his wife, and Emma Brunson and Harry S. Brunson her husband proprietors of the North one half, of the East one half (N<sup>1</sup>/<sub>2</sub> of E<sup>1</sup>/<sub>2</sub>) of Block four (4) B. Schmitz's Addition to St. Paul Minn., have caused the same to be platted and hereafter known as, Netzel's Subdivision, as shown on this plat, and hereby dedicate to the public, for public use forever all the avenues and alleys as hereon indicated.

Witness our hands and seals this 28<sup>th</sup> day of October 1931

In presence of  
Stafford L. Oberg  
Edith R. Oberg  
Emma Brunson  
Harry S. Brunson

William E. Netzel  
Kate S. Netzel  
Stafford L. Oberg  
Edith R. Oberg  
Emma Brunson  
Harry S. Brunson

State of Minnesota }  
County of Ramsey }  
On this 28<sup>th</sup> day of October, A.D. 1931  
before me personally appeared, William  
E. Netzel and Kate S. Netzel his wife, Stafford L. Oberg and Edith R. Oberg his wife and Emma Brunson and Harry S. Brunson her husband to me well known and acknowledged that they executed the foregoing certificate as their own free act and deed.

Notary Public, Ramsey Co., Minn.  
My Commission expires, May 12, 1933

Accepted and approved this 23<sup>rd</sup> day of November, A.D. 1931

J. J. Jordan  
F. J. Jordan  
Walter Cron

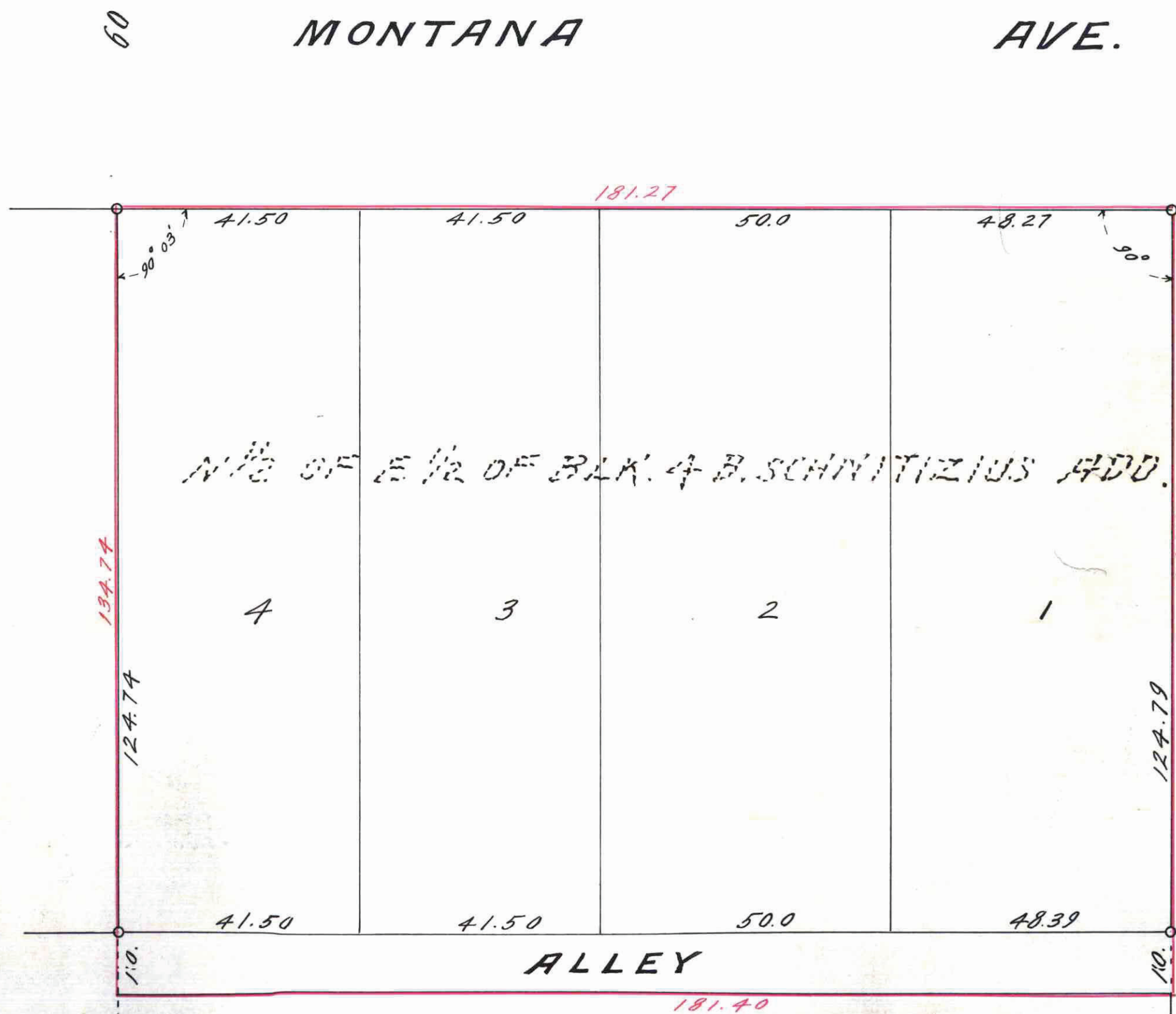
Plat  
Commissioner's  
Commissioner of Public Works

Accepted by the Council, NOV 24 1931  
Approved, NOV 24 1931

City Clerk

60. WALSHE AVE.

INGLESTON'S SUB.



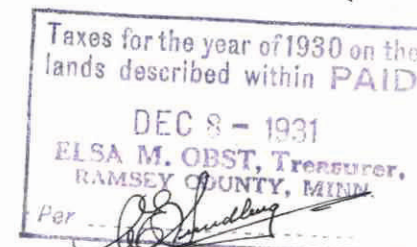
This is to certify that, Walsh Investment Company a corporation existing under and pursuant to the laws of the State of Minnesota, Mortgagee of the North one half of the East one half (N<sup>1</sup>/<sub>2</sub> of E<sup>1</sup>/<sub>2</sub>) of Block four (4) B. Schmitz's Addition to St. Paul Minn., hereby agrees to have the same platted and hereafter known as, Netzel's Subdivision, as shown on this plat.

In witness whereof said corporation has executed this instrument by its duly authorized officers and has caused its corporate seal to be affixed this 18<sup>th</sup> day of November A.D. 1931

In presence of  
A. S. Osburn  
B. W. Lytton  
Walsh Investment Company  
By: R. A. Walsh, Vice President  
and: W. H. Walsh, Secretary

State of Minnesota }  
County of Ramsey }  
On this 18<sup>th</sup> day of November 1931 before me personally appeared  
R. A. Walsh Jr. and Wm. W. Walsh to me personally known, who being  
each by me duly sworn, they did say that they are respectively the Vice President and  
Secretary of Walsh Investment Company, a Minnesota corporation, and that the seal  
affixed to the foregoing instrument is the corporate seal of said corporation, and that  
said instrument was signed and sealed in behalf of said corporation by authority of its  
Board of Directors and said R. A. Walsh Jr. and Wm. W. Walsh acknowledged said  
instrument to be the free act and deed of said corporation.

Notary Public, Ramsey Co., Minn.  
My Commission expires, Oct. 9, 1938



818228