

AUDITOR'S SUB. NO. 67

ST. PAUL, MINNESOTA

Scale: 1" = 40'

825102

128

October 1931

Note: Red lines and figures indicate former Subdivs.
Black lines and figures indicate Auditor's Subdiv.

I, Paul N. Coates, County Surveyor of Ramsey County Minnesota, hereby certify to having platted the property as described on this map upon request and by order of the County Auditor, as Auditor's Subdivision No. 67, St. Paul, Minnesota and the same is correct in accordance with records of Register of Deeds.

Paul N. Coates
COUNTY SURVEYOR

STATE OF MINNESOTA } On this 19 day of Oct. A.D. 1931, personally appeared before me Paul N. Coates, County Surveyor of Ramsey County, to me well known and acknowledged that he executed the foregoing certificate as his own free act and deed.

W. J. Sigler
Notary Public, Ramsey Co. Minnesota
My Commission Expires, _____

STATE OF MINNESOTA } I, Geo. J. Ries, County Auditor of the County and State aforesaid do hereby certify that in compliance with, and according to, the provisions of Section 2219 Mason's Minnesota Statutes for 1927, I have as such County Auditor caused the following described tract of land to wit: that tract bounded by Capitol Heights, Robert St, and University Ave, being parts of block 23 Ashton & Sherburne's Add, block 1 Lambert & Co's. Add, Westerloo St. Vac. and all of Pomroy's Rear, to be platted and hereafter known as Auditor's Subdivision No. 67 St. Paul Minn. as shown on this plat.
Witness my hand and official seal this 19 day of Oct. A.D. 1931.

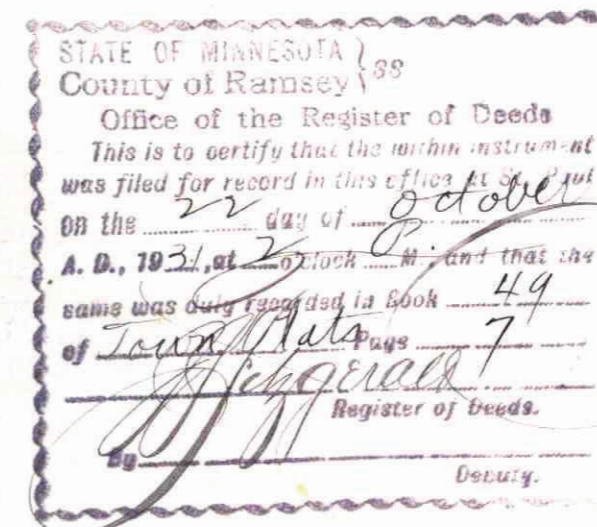
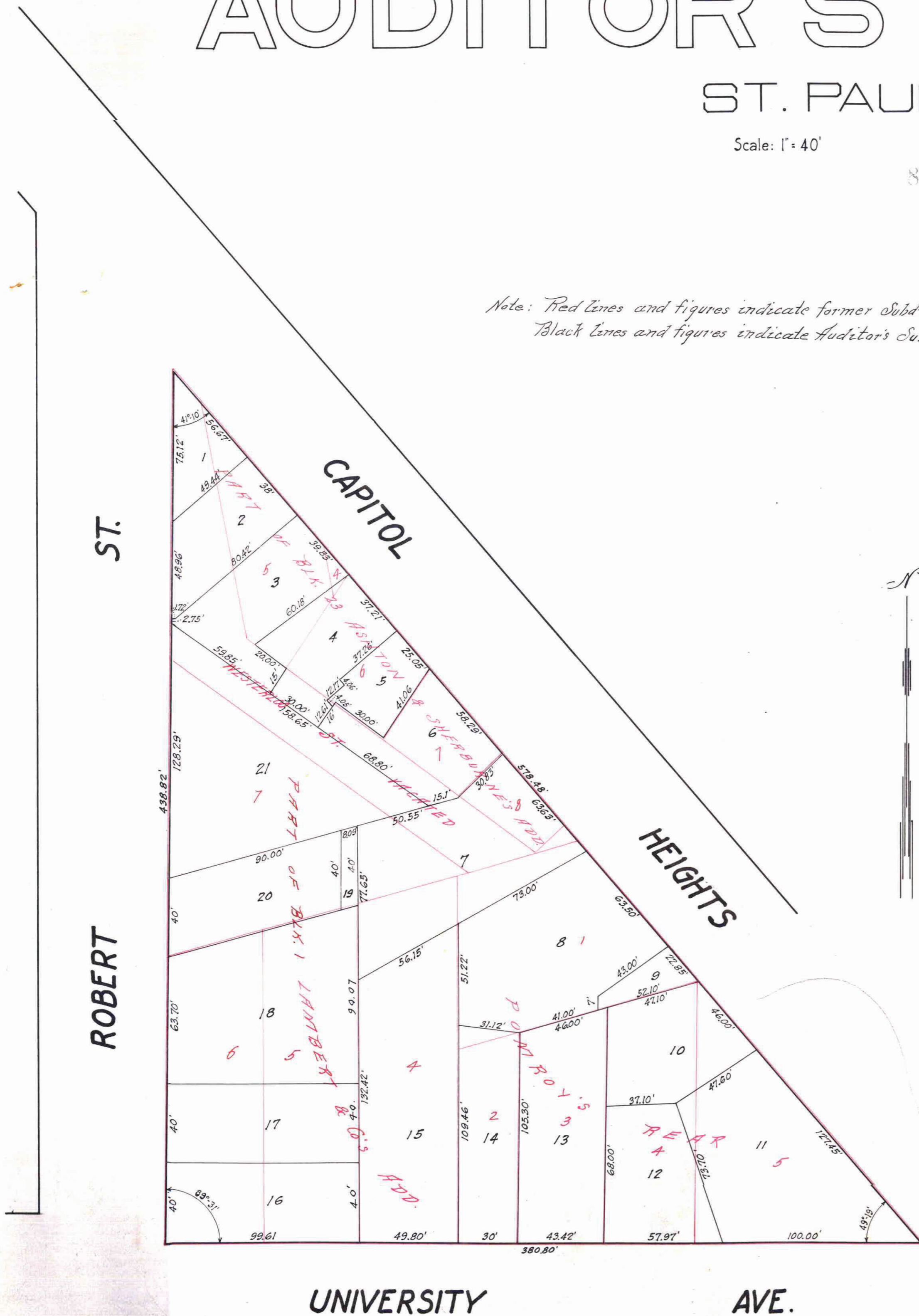
IN PRESENCE OF:

F. A. Kingma
John P. Barthelmer

Geo. J. Ries
COUNTY AUDITOR

STATE OF MINNESOTA } On this 19 day of Oct. A.D. 1931, personally appeared before me Geo. J. Ries, County Auditor of Ramsey County, to me well known and acknowledged that he executed the foregoing certificate as his own free act and deed.

John P. Barthelmer
Notary Public, Ramsey Co. Minnesota
My Commission Expires, Dec. 1, 1932
JOHN P. BARTHELMER,
Notary Public, Ramsey County, Minn.
My Commission Expires Dec. 1, 1932.



This plat document is an UNOFFICIAL copy of a Subdivision Plat or Registered Land Survey and is made available for information purposes only. To obtain an official copy please contact the Ramsey County Recorder's Office.

201528