

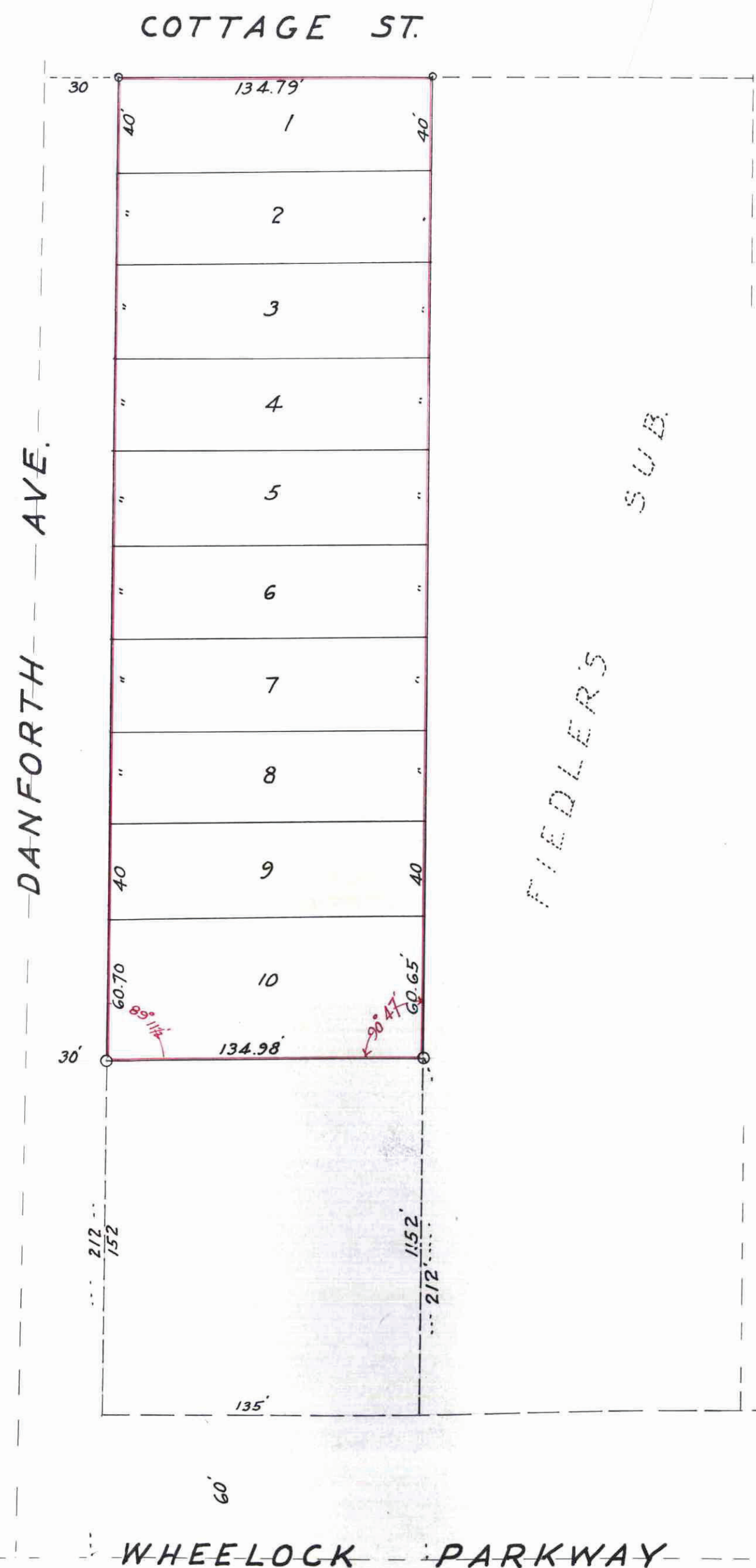
# ACKERMAN'S ADD.

822056

## St. Paul Minn.

Scale 50 Feet per inch  
o indicates iron

Jens Pedersen Surveyor.



I hereby certify to having surveyed the property described on this plat as; Ackerman's Add. St. Paul, Minn., and have placed irons at the corners as shown and the same is correct. There is no low wet ground nor any traveled road or easement on or across same, except as shown.

Jens Pedersen  
Surveyor.

State of Minnesota } On this 6<sup>th</sup> day  
County of Ramsey } of Aug. A.D. 1931,  
before me personally appeared Jens Pedersen  
to me well known, and acknowledged that  
he executed the foregoing certificate as his  
own free act and deed, Aug 15, 1932  
Jens Pedersen  
Notary Public, Ramsey Co., Minn.  
My Commission expires, Aug 15-1932

This is to certify that Lena Ackerman and Adam Ackerman her husband proprietors of, the West 1/2 of Lot 13 Cottage Homes, except the South 2 1/2 feet thereof and except the West 30 feet taken for Danforth Ave, have caused the same to be platted and hereafter known as; Ackerman's Add. St. Paul, Minn., as shown on this plat, and hereby dedicate to the public for public use forever, all the streets and avenues as hereon indicated.

Witness our hands and seals this 6<sup>th</sup> day of AUGUST 1931  
In presence of

Jens Pedersen  
Surveyor

Lena Ackerman  
Adam Ackerman

State of Minnesota } On this 6<sup>th</sup> day of August, A.D. 1931 before  
County of Ramsey } me personally appeared, Lena Ackerman and  
Adam Ackerman her husband, to me well known, and acknowledged that  
they executed the foregoing certificate as their own free act and deed.

Jens Pedersen  
Notary Public, Ramsey Co., Minn.  
My Commission expires, Aug. 15, 1932.

Accepted and approved this 14<sup>th</sup> day of August A.D. 1931

George K. Thorne  
James Jordan  
F. J. Brown  
Milton Koen

Plat  
Commissioners  
Commissioner of Public Works.

Accepted by the Council, August 17<sup>th</sup> 1931  
Approved, August 17<sup>th</sup> 1931

Mildred Gibbons  
City Clerk.

This plat document is an UNOFFICIAL copy of a Subdivision Plat or Registered Land Survey and is made available for information purposes only.

To obtain an official copy please contact the Ramsey County Recorder's Office.

RAMSEY COUNTY

STATE OF MINNESOTA }  
County of Ramsey }  
Office of the Register of Deeds  
This is to certify that the within instrument was filed for record in this office on the 2<sup>nd</sup> day of August A. D., 1931, at 2:30 P. M., and that the same was duly recorded in Book 49 of Town Plat Large 3

J. Pedersen  
Register of Deeds.  
Deputy.

All Installments of Assessments due on the within property to date are paid

AUG 26 1931  
DEPARTMENT OF FINANCE  
ST. PAUL, MINN.  
JOHN DONALD CURR FRENCH  
By Schmeidler

Taxes for the year of 1930 on the lands described within PAID

AUG 18 1931  
ELSA M. OBST, Treasurer,  
RAMSEY COUNTY, MINN.  
Per [Signature]

TAXES PAID  
And Transfer Entored

AUG 18 1931  
GEO. J. RIES,  
Auditor, Ramsey County, Minn.  
By [Signature] Deputy.

2502228