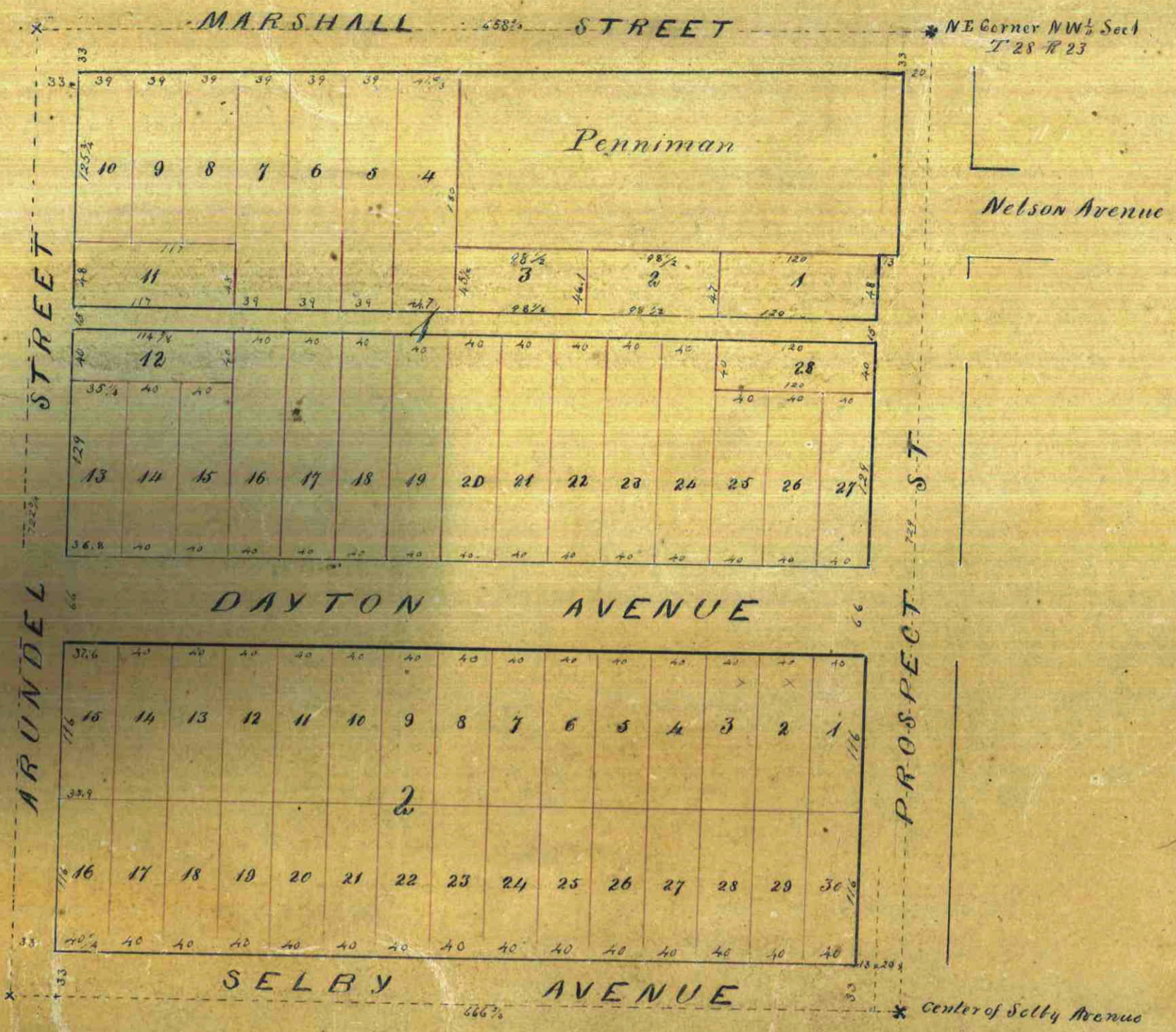


KERNS ADDITION TO ST PAUL

9.72
9

This plat document is an UNOFFICIAL copy of a Subdivision Plat or Registered Land Survey and is made available for information purposes only.

To obtain an official copy please contact the Ramsey County Recorder's Office.



Office of Register of Deeds
Ramsey Co. Minn.
I hereby certify that this map was filed in this office for record July 22 1857 at 1 o'clock P.M. and was duly recorded in Book 6 of Town plats.
L. M. Oliver
Register of Deeds
J. A. Oliver Deputy

I hereby certify that in the month of September 1856, I surveyed into blocks, streets and lots, Kern's addition to Saint Paul, according to the above plan, and that the same is correctly done, Dated Saint Paul, October 23rd 1856.
John T. Halsted
Surveyor.

Saint Paul, Minnesota Territory
October 23rd 1856.

We the undersigned, Simon Kern, Walter J. Gilbert, William Markoe and Sarah C. Cox, proprietors of Kern's addition to Saint Paul do hereby certify that we have had the same laid out for town purposes, as above plotted, and we do hereby give the streets thereon designated for public use.
Simon Kern
Walter J. Gilbert
by H. H. R. Halsted in fact
William Markoe
Sarah C. Cox

Territory of Minnesota
County of Ramsey ss
Before the undersigned personally appeared Simon Kern, Walter J. Gilbert, William Markoe and Sarah C. Cox, this sixth day of November A.D. 1856, to me well known to be the identical persons who signed and executed the foregoing certificate, and who acknowledged that they executed the same freely and voluntarily for the uses and purposes therein specified.
A. L. Emerson
Alderman 3rd Ward
St. Paul Minn.