

# KNAPHEIDE ADDITION

ST. PAUL, MINNESOTA

Surveyed by Donald O. Weber

SCALE 1 in = 50 ft      o Indicates Iron

767276 96

I hereby certify to having surveyed and plotted the property described on this map as Knapheide Addition and have placed irons at the corners as hereon indicated, and the same is correct.  
There is no low wet ground nor any traveled road on or across same, except as shown.

STATE OF MINNESOTA } On this 23 day of July, A.D. 1928, personally appeared before me the undersigned Donald O. Weber to me well known, and COUNTY OF RAMSEY } acknowledged that he executed the foregoing certificate as his own free act and deed.

*D. O. Weber*  
Surveyor

*Alfred L. Brown*  
Notary Public, Ramsey County, Minnesota  
My Commission Expires May 26, 1930

This is to certify that Anna M. Horst and Charles L. Horst, her husband, proprietors of the East 271.55 ft of the N. 1/2 of E. 1/2 of N. 1/2 of S.E. 1/4 of Section 8, Twp. 28 N., R. 23 W., except the South 75 ft of the East 170 ft thereof, also the N. 1/2 of E. 1/2 of N. 1/2 of S.E. 1/4 of Sec. 8, T. 28 N., R. 23 W., except the E. 40 ft of the N. 1/2 thereof, have caused the same to be surveyed and platted and hereafter known as Knapheide Addition, as shown by this plat, and hereby dedicate to the public, for public use forever, all streets, avenues and alleys as hereon indicated.

Witness our hands and seals this 23 day of July, A.D. 1928

IN PRESENCE OF  
*Francis Ballou*  
*Walter Mulliken*  
*Francis Ballou*  
*Walter Mulliken*

*Anna M. Horst*  
*Charles L. Horst*

STATE OF MINNESOTA } On this 23 day of July, A.D. 1928, before me, a notary public within and for said County, personally appeared Anna M. COUNTY OF RAMSEY } Horst and Charles L. Horst, her husband, to me, well known, and acknowledged that they are the proprietors named in the foregoing instrument and that they executed the foregoing instrument as their own free act and deed.

*Alfred L. Brown*  
Notary Public, Ramsey County, Minnesota  
My Commission Expires May 26, 1930

Accepted and approved this 10<sup>th</sup> day of Aug. A.D. 1928.

*George H. Hancock*  
*Jesse Jordan*  
*J. H. Smith*  
PLAT COMMISSIONERS

*J. H. Smith*  
COMMISSIONER OF PUBLIC WORKS

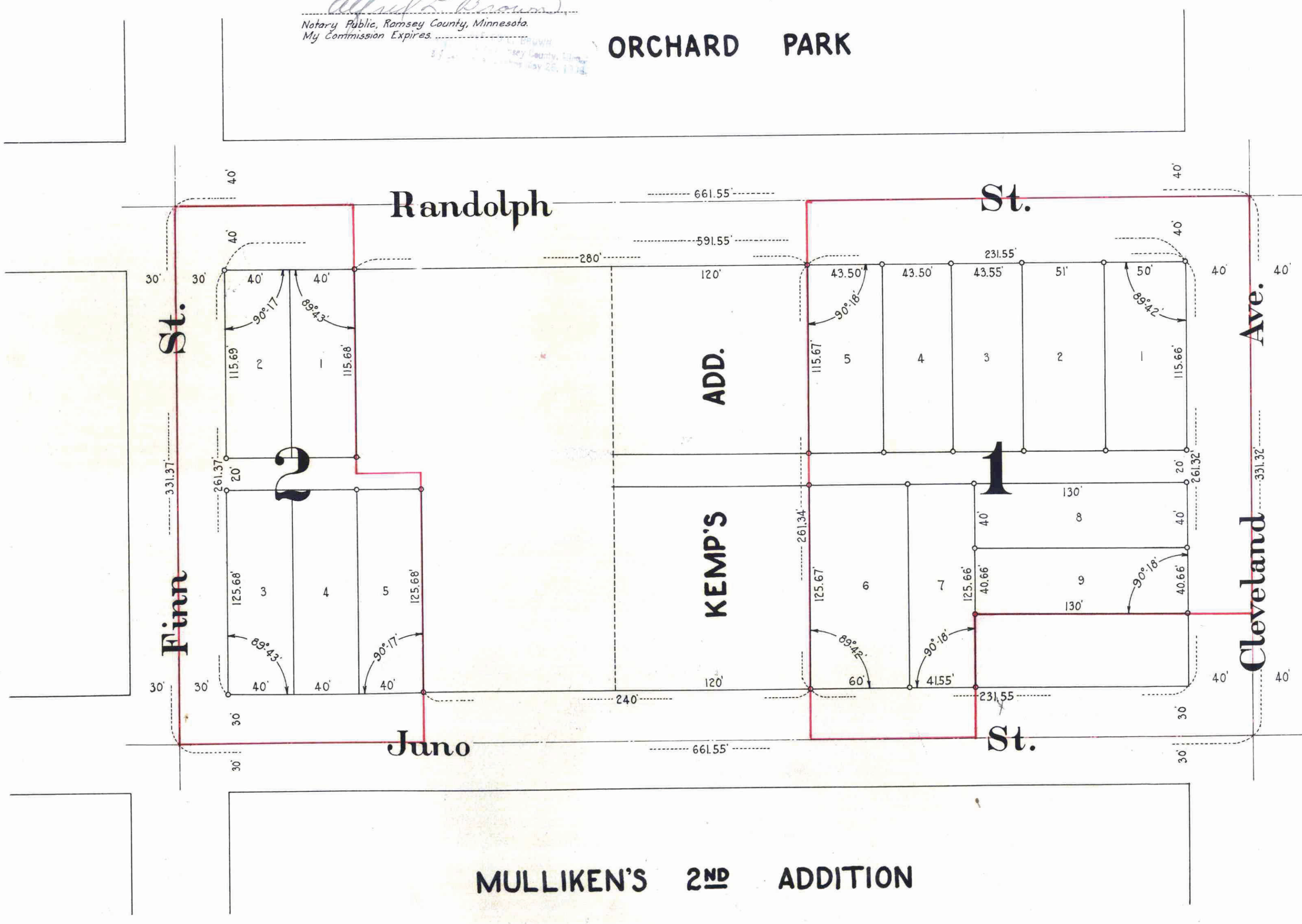
Accepted by the Council, Aug. 14<sup>th</sup> - 1928

Approved, Aug. 14<sup>th</sup> - 1928

*M. D. Dredall*  
CITY CLERK

ORCHARD PARK

N



This plat document is an UNOFFICIAL copy of a Subdivision Plat or Registered Land Survey and is made available for information purposes only.  
To obtain an official copy please contact the Ramsey County Recorder's Office.

TAXES PAID  
And Transfer Entored  
OCT 11 1928  
GEO. J. RIES,  
Auditor, Ramsey County, Minn.  
By *W. J. Kelly* Deputy

All Installments of Assessments due on the within property are paid  
OCT 11 1928  
DEPARTMENT OF FINANCE  
ST. PAUL, MINN.  
GEO. K. SCHNEIDER, CHIEF FINANCE  
By *Schneider*

STATE OF MINNESOTA }  
County of Ramsey }  
Office of the Register of Deeds  
This is to certify that the within instrument was filed for record in this office at St. Paul on the 11<sup>th</sup> day of October A. D., 1928, at 5:00 P. M. and that the same was duly recorded in Book of Land Platage No. 102, Page 47.  
*J. J. Hamilton*  
Register of Deeds

Taxes for the year of 1927 on the lands described within PAID  
OCT 11 1928  
ELSA M. CRIST, Treasurer,  
RAMSEY COUNTY, MINN.  
By *Hamilton*

767276