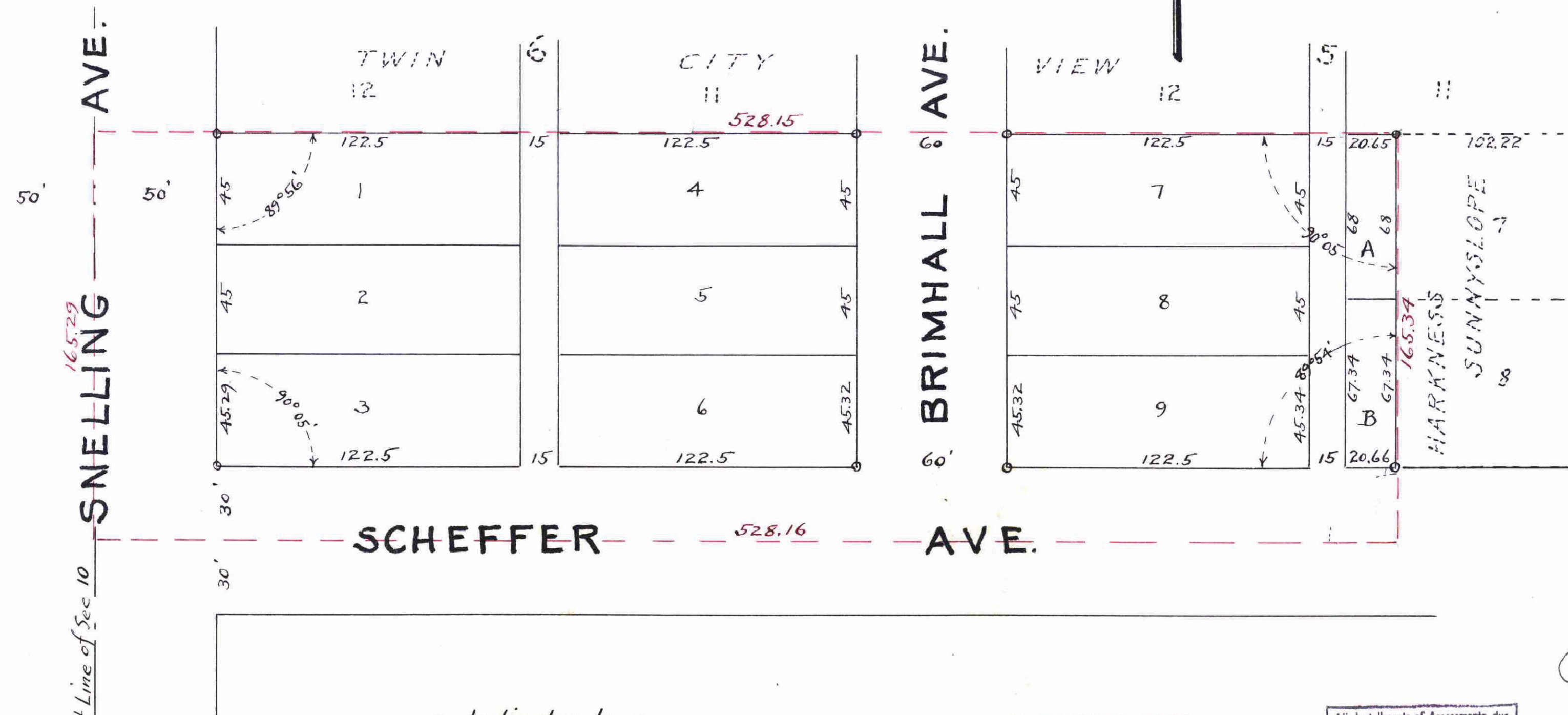


# IDEAL HOME SITES

SCALE 1" : 40'

762169 <sup>.84±</sup> N

I hereby certify to having surveyed and platted the property described on this map as IDEAL HOME SITES and have placed irons as shown on this map and the same is correct. There is no low wet ground nor any traveled road or easement on or across same. Charles Murray Surveyor



State of Minnesota } ss.  
 County of Ramsey }  
 On this 17<sup>th</sup> day of July, A.D. 1928, before me personally appeared Charles Murray, to me well known, and acknowledged that he executed the foregoing certificate as his own free act and deed. Paul A. Frohlich Notary Public, Ramsey County, Minn. My commission expires March 28, 1930

This is to certify that Maria Rasmussen and Peter Rasmussen, her husband, proprietors of North 2 (Two) Acres of North 1/2 of West 10 (Ten) Acres of South 50 (Fifty) Acres of Southwest 1/4 of Section 10, Town 28 North, Range 23 West, except Streets, and hereafter known as IDEAL HOME SITES as shown by this plat and hereby dedicate to the public, for the public use forever, all the streets and alleys as herein indicated.

Witness our hands and seals this 16<sup>th</sup> day of July, A.D. 1928. In presence of John M. Lynch, Maria Rasmussen, Peter Rasmussen

State of Minnesota } ss.  
 County of Ramsey }  
 On this 16<sup>th</sup> day of July, A.D. 1928, before me personally appeared Maria Rasmussen and Peter Rasmussen, to me well known, and acknowledged that they executed the foregoing certificate as their own free act and deed. John M. Lynch Notary Public, Ramsey County, Minn. My commission expires February 21<sup>st</sup> 1933.

Accepted and approved this 19<sup>th</sup> day of July, A.D. 1928. George W. Hanson, Fred Brown, John W. Gordon Plat Commissioners, John W. Gordon Commissioner of Public Works. Accepted by the Council Approved July 19, 1928 City Clerk.

TAXES PAID And Transfer Charges JUL 23 1928 GEO. J. RIES Auditor Ramsey County, Minn.

All Installments of Assessments due on the within property to date are paid JUL 23 1928 DEPARTMENT OF FINANCE ST. PAUL, MINN. C. J. McLEOD, COMPTROLLER By [Signature]

Taxes for the year of 1927 on the lands described within PAID JUL 23 1928 ELSA M. OBST, Treasurer, RAMSEY COUNTY, MINN. By [Signature]

STATE OF MINNESOTA } ss. County of Ramsey } Office of the Register of Deeds This is to certify that the within instrument was filed for record in this office at St. Paul on the 23<sup>rd</sup> day of July, A. D. 1928, at 10 o'clock, and that the same was duly recorded in Book 11 of [Signature] Register of Deeds, County.

This plat document is an UNOFFICIAL copy of a Subdivision Plat or Registered Land Survey and is made available for information purposes only. To obtain an official copy please contact the Ramsey County Recorder's Office.

691207