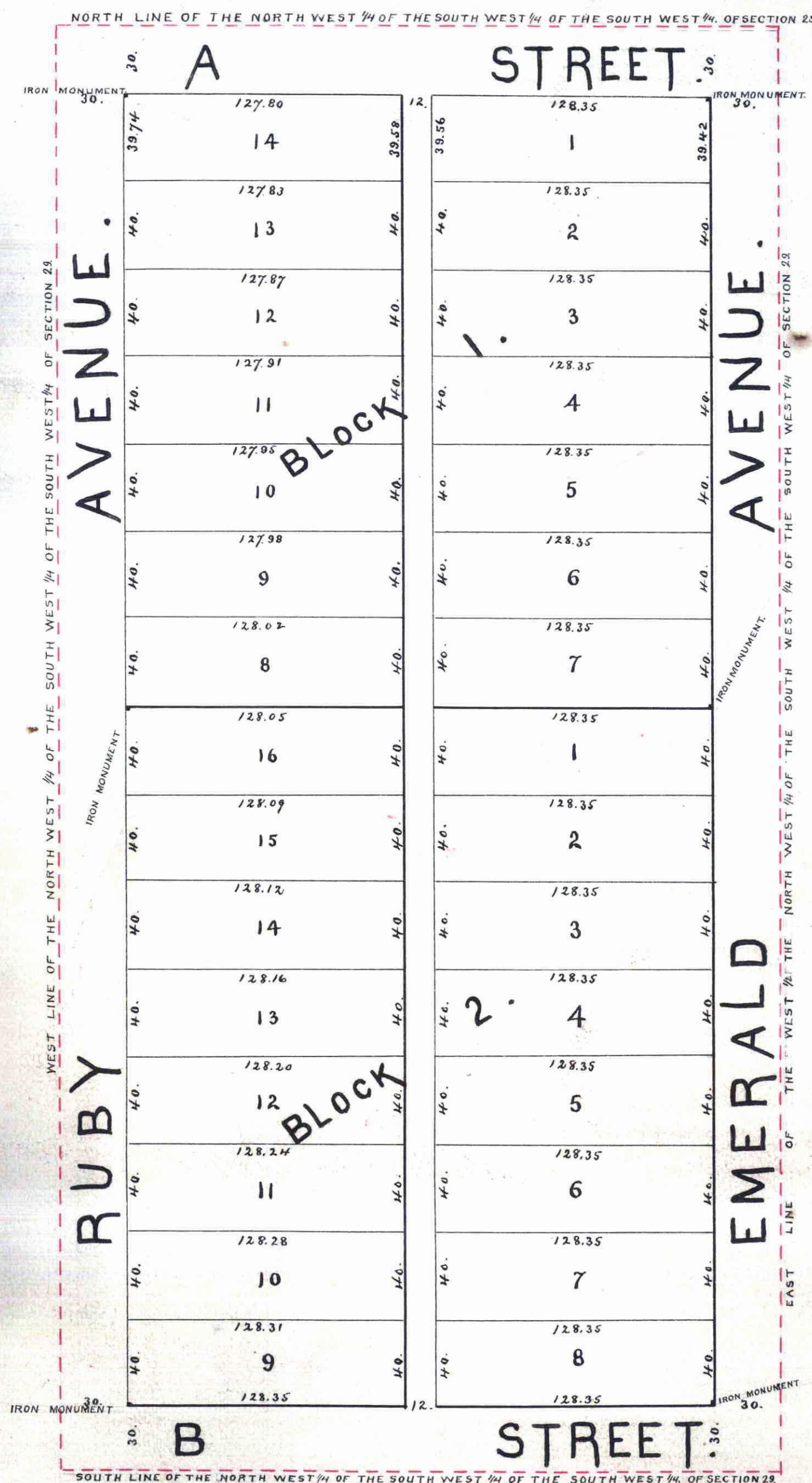


PLAT OF SUPPLEMENT TO LAKE VIEW PARK, RAMSEY CO., MINN.

JAN. 1887.

SCALE 50^{FT} = 1^{IN}

NUTTER & PLUMMER
CIVIL ENGS.



We hereby certify to having surveyed and platted the property as described on this map as "Supplement to Lake View Park, Ramsey Co., Minn.," and have placed iron monuments at the corners of each and every block as shown on this map, and the same is correct.

Nutter & Plummer
Civil Engrs.

Accepted and approved this 15th day of January A.D. 1887.

J. P. Coon
J. A. Starkey

Plat Commissioners.

State of Minnesota,
County of Hennepin, ss. On this 14th day of January A.D. 1887,
before me personally came J. H. Nutter, to me well known as
a member of the firm of Nutter and Plummer, and acknowl-
edged that he signed the above certificate in the name
and as the free act and deed of said firm.

H. Kingman
Notary Public, Hennepin Co., Minn.

Taxes paid, Jan'y 17th 1887,

M. A. Rain

County Auditor,
Ramsey Co., Minn.

This is to certify that Martin Connelly (unmarried), proprietor
of the West half (W 1/2) of the North West quarter (N.W. 1/4) of the South
West quarter (S.W. 1/4) of the South West quarter (S.W. 1/4) of Section 29,
Township 30 North, of Range 23 West, of the 4th Principal Merid-
ian; have caused the same to be surveyed and platted, and
hereafter known as "Supplement to Lake View Park, Ramsey
Co., Minn.," as shown by this plat and hereby dedicate to
the public, and for the public use forever, all streets,
avenues and alleys, as herein indicated.

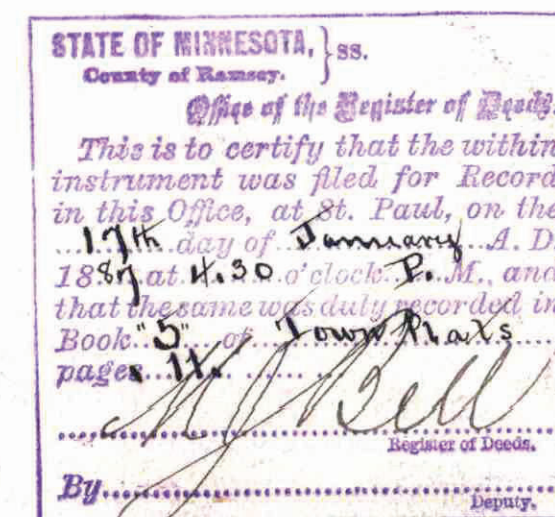
Witness my hand and seal, this 14th day of January 1887.

In presence of:
L. B. Coffin
L. A. Dym

Martin Connelly Seal

State of Minnesota,
County of Hennepin, ss. On this 14th day of January A.D. 1887,
personally came before me, the undersigned, Martin Connelly,
to me well known, and he acknowledged that he executed
the foregoing certificate for the uses and purposes herein
expressed.

L. B. Coffin
Notary Public,
Hennepin Co., Minn.



This plat document is an UNOFFICIAL copy of a Subdivision Plat or Registered Land Survey and is made available for information purposes only.

To obtain an official copy please contact the Ramsey County Recorder's Office.