

AMES' PARK PLAT 2

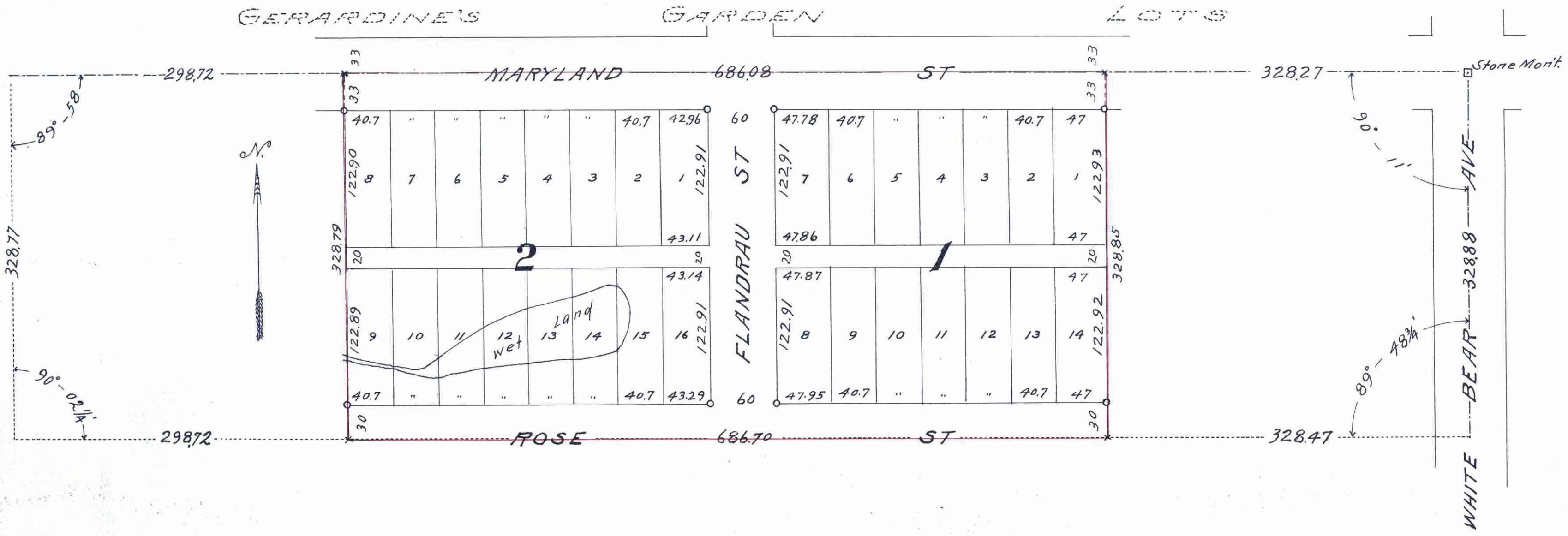
Scale: 80 to 1"

o Indicates Iron Monument

Surveyed By
T. Milton Fowble,
Civil Engineer and Surveyor
St. Paul, Minn.

736939

160



I hereby certify to having surveyed and platted the property described on this plat as AMES' PARK PLAT 2 and have placed iron monuments as hereon shown, and the same is correct.

State of Minnesota }
County of Ramsey }

There are no traveled roads or thoroughfares on or across this land, nor any well land except as hereon shown.

On this 20th day of May, A.D. 1927, before me personally appeared T. Milton Fowble, to me known to be the person who executed the foregoing certificate and acknowledged that he executed the same as his free act and deed.

J. Milton Fowble
Surveyor

Lucile Stoffer
Notary Public, Ramsey County, Minnesota
My Commission expires December 5th 1933

This is to certify that Helen F. Ames, widow, owner of the West 3/4 of the North 1/4 of the N.E. 1/4 of the N.E. 1/4 of Section 27 T.29N., R.22W. Ramsey County, Minnesota, excepting the west 298.72 feet of said tract, has caused the same to be surveyed and platted and to be hereafter known as AMES' PARK PLAT 2, as shown by this plat, and hereby dedicates to the public for public use forever, all the streets and alleys hereon designated.

Witness my hand and seal this 1st day of June, A.D. 1927.

In presence of

L. E. Matteson

Helen F. Ames

T. Milton Fowble

State of Minnesota }
County of Ramsey } On this 1st day of June A.D. 1927, before me personally appeared Helen F. Ames, to me known to be the person who executed the foregoing instrument and acknowledged that she executed the same as her free act and deed.

M.M. Missall
Notary Public Ramsey County, Minnesota
My Commission expires April 11, 1933

Accepted and approved this 1st day of June A.D. 1927.

George C. Landreth

H. L. Bartel

E. M. Williams

Plat Commissioners.

Commissioner of Public Works.

Accepted by the Council June 14th A.D. 1927
Approved June 14th A.D. 1927

D. W. Didsall
City Clerk.

This plat document is an UNOFFICIAL copy of a Subdivision Plat or Registered Land Survey and is made available for information purposes only.
To obtain an official copy please contact the Ramsey County Recorder's Office.

STATE OF MINNESOTA, ss
County of Ramsey }
Office of the Register of Deeds
This is to certify that the within instrument was filed for record in this office at St. Paul on the 21 day of June A. D. 1927 at 2:00 o'clock P. M., and that the same was duly recorded in Book 41 of Records, Page 18.
By [Signature] Register of Deeds.
[Signature] Deputy.

TAXES PAID
And Transfer Entered
JUN 21 1927
GEO. J. RIES,
Auditor Ramsey County, Minn.
By [Signature] Deputy.

All Liabilities of Assessments due on the within property paid in full
JUN 20 1927
DEPARTMENT OF FINANCE
ST. PAUL, MINN.
C. J. [Signature] COUNTY CLERK
By [Signature]

Taxes for the year of 1926 on the lands described within PAID
JUN 20 1927
ELSA M. BEST, Treasurer
RAMSEY COUNTY, MINN.
By [Signature]

736939