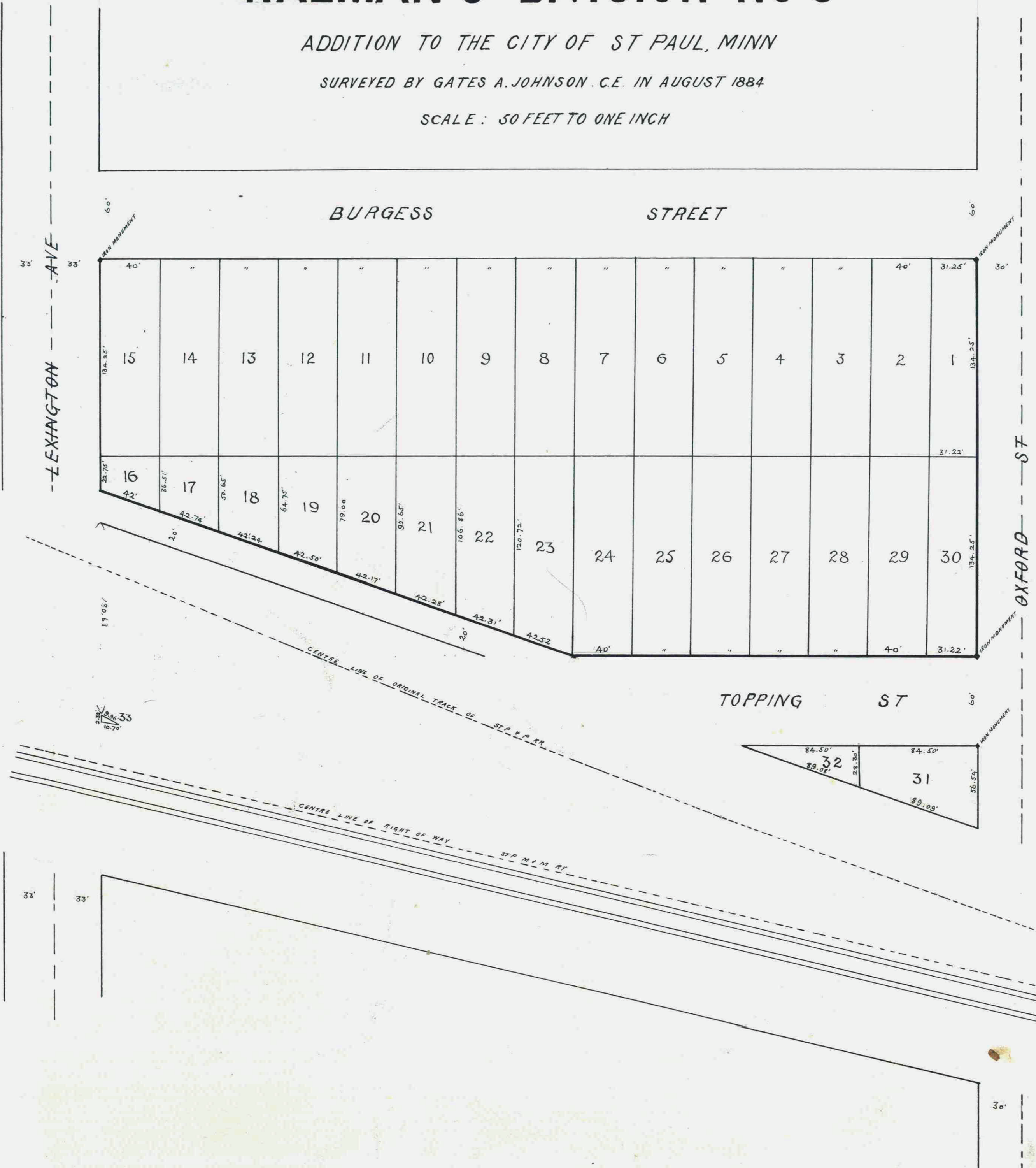


KALMAN'S DIVISION NO 3

ADDITION TO THE CITY OF ST PAUL, MINN

SURVEYED BY GATES A. JOHNSON C.E. IN AUGUST 1884

SCALE: 50 FEET TO ONE INCH



I, hereby certify to having surveyed and platted the property as described on this map as Kalman's Division No 3 Addition to St Paul, Minn. and have placed iron monuments at the corners of the block as hereon on this map shown and the same is correct.

September 15 1884. *Gates A. Johnson*
Surveyor.

We, Robert A. Smith and Mary E. Smith, his wife, the undersigned owners of the north half of the south half of the west half of the Northwest quarter of the south west quarter of Section 26, Township 29, Range 23, do hereby certify to having caused the same to be surveyed and platted as Kalman's Division No 3 Addition to St Paul, Minn. as hereon and heron indicated, and we do hereby give and dedicate to the public and for public use forever all the streets and alleys as on this map or plat laid out and designated.

In witness whereof we have hereunto set our hands and seals this 15 day of Sept. A.D. 1884.

In presence of
St. Paul, Minn.
Robert A. Smith (Seal)
Mary E. Smith (Seal)

Be it known that on this 15 day of Sept. A.D. 1884 personally came before me Robert A. Smith and Mary E. Smith, his wife, to me personally known to be the same persons described in and who executed the foregoing instrument and acknowledged that they executed the same freely and voluntarily for the use and purpose hereon expressed.

James Johnson
Notary Public.

Examined and approved
St. Paul, Sept. 16, 1884.
James Starkley } Plat Commission

I have examined this plat and recommend that it be approved and accepted by the Common Council of St Paul.

W. Johnson
City Engineer.

I certify that Kalman's Division No 3 Addition to St Paul, Minnesota, as shown on this plat was accepted by the Common Council on the 16 day of Sept. 1884 as an addition to this city.

W. Johnson
City Clerk. St Paul, Minn.

Taxes paid
W. Johnson
County Auditor.

Assessments for local improvements paid.
Geo. Nixon City Treasurer.

Office of Register of Deeds } ss.
 Ramsey County }
 Filed for record on the ... day of ... 1884.

Register of Deeds.

We hereby certify that this plat or map is a true and correct copy of an original plat or map of said Kalman's Division No 3 Addition to St Paul, Minn. this day approved signed and accepted by this Commission.

Dated, St Paul, Sept. 16 1884

James Starkley } Plat Commission.

STATE OF MINNESOTA, ss.
 County of Ramsey.
 Office of the Register of Deeds.
 This is to certify that the within instrument was filed for record in this Office, at St Paul, on the 16 day of October, A. D. 1884 at 2 o'clock P. M., and that the same was duly recorded in Book V of Plats pages 25.

R. C. Wiley
Register of Deeds.
 By _____ Deputy.

This plat document is an UNOFFICIAL copy of a Subdivision Plat or Registered Land Survey and is made available for information purposes only.

To obtain an official copy please contact the Ramsey County Recorder's Office.

