

FLEMING'S SUB.

ST. PAUL, MINNESOTA

Surveyed by W. F. Brettschneider

716608

SCALE 1" = 40'

○ INDICATES IRON

JULY 19, 1926.

STATE OF MINNESOTA
 County of Ramsey
 Office of the Register of Deeds
 This is to certify that the within instrument was filed for record in this office at St. Paul on the 24th day of August A. D. 1926 at 2:20 o'clock P. M., and that the same was duly recorded in Book 445 of Land Plats, Page 15.
 J. S. Fitzgerald
 Register of Deeds
 By *[Signature]* Deputy.

This plat document is an UNOFFICIAL copy of a Subdivision Plat or Registered Land Survey and is made available for information purposes only.
 To obtain an official copy please contact the Ramsey County Recorder's Office.

State of Minnesota } ss. I hereby certify to having surveyed and platted the property described on this map as Fleming's Sub.,
 County of Ramsey } and have placed iron monuments at the corners as hereon indicated and the same is correct.

W. F. Brettschneider Surveyor.

State of Minnesota } ss. On this 20 day of July AD 1926, personally appeared before me the undersigned W. F. Brettschneider,
 County of Ramsey } to me well known and acknowledged that he executed the foregoing certificate of his own free act and deed.

[Signature]

MARK W. WOODRUFF, Notary Public, Ramsey County, Minn. My Commission expires April 25, 1928.

This is to certify that James Fleming, single, owner of S. 1/2 of Lot 9 of Cottage Homes Addition, has caused the same to be surveyed and platted and hereafter known as Fleming's Sub. as shown by this plat and hereby dedicates to the public, for public use forever, all streets and alleys as herein indicated.

Witness my hand and seal this 24th day of July AD 1926

[Signatures]

James Fleming

State of Minnesota } ss. On this 24th day of July AD 1926, personally appeared before me the undersigned James Fleming, single,
 County of Ramsey } to me well known and acknowledged that he executed the foregoing certificate as his own free act and deed.

[Signature]

Accepted and approved this 13th day of August A. D. 1926.

[Signatures]
 Plat Commission
 Commissioner of Public Works.

Taxes for the year of 1926 on the lands described within P. M. D. 19 1926
[Signature]

All Installments of Assessments due on the within property to date are paid
 AUG 19 1926
 DEPARTMENT OF FINANCE
 ST. PAUL, MINN.
 C. J. MULLIN, COMPTROLLER
 By *[Signature]*

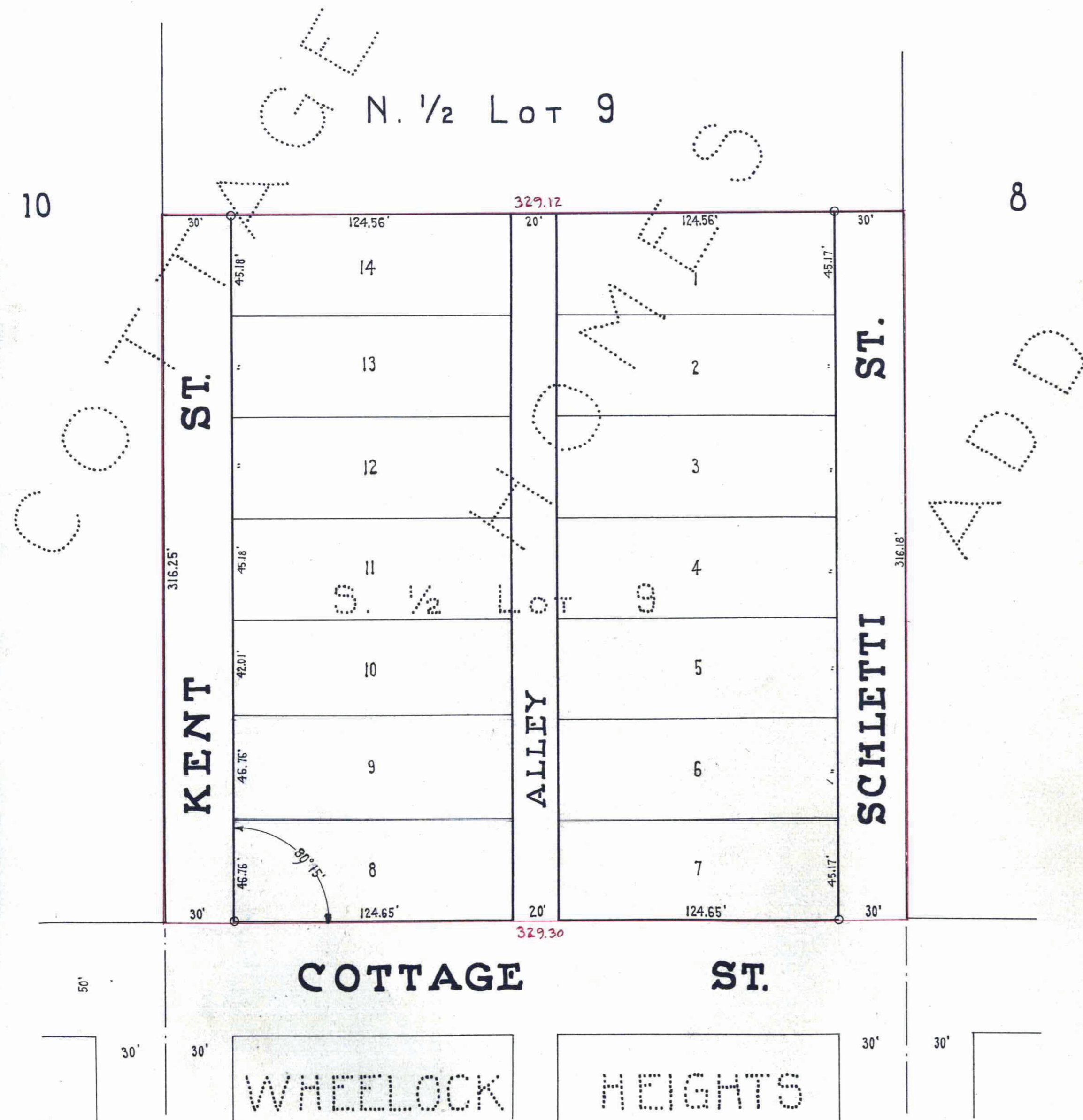
TAXES PAID And Transfer Entered Aug 19 1926

GEO. J. RIES, Auditor, Ramsey County, Minn. By *[Signature]* Deputy.

Accepted by the Common Council August 24, 1926 AD 1926

Approved August 24, 1926 AD 1926

[Signature] City Clerk



716608

10

8

COTTAGE HOMES

ADDD

WHEELLOCK HEIGHTS

Tracing made