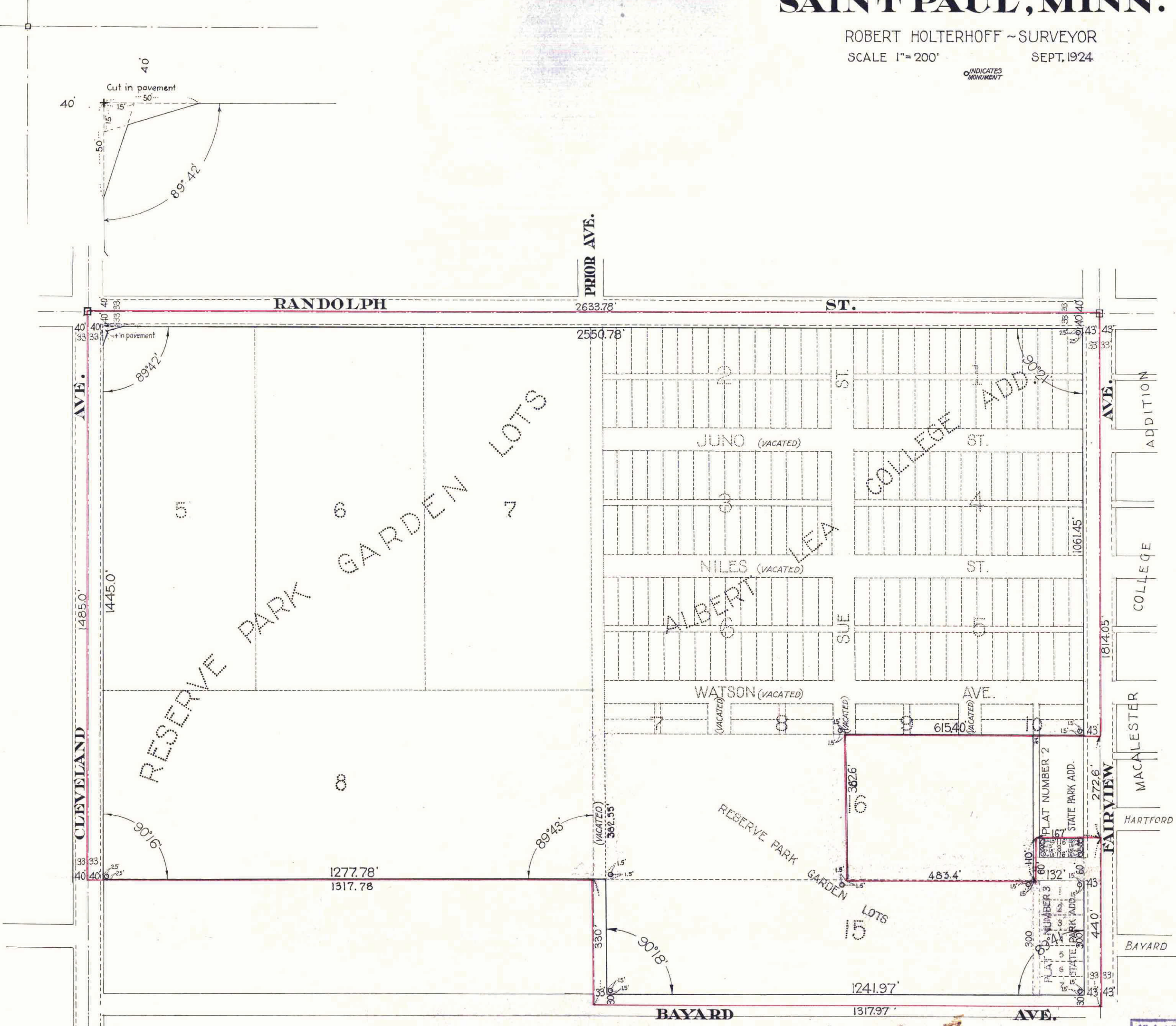


GROUNDS OF THE COLLEGE OF ST. CATHERINE

SAINT PAUL, MINN.

ROBERT HOLTERHOFF ~ SURVEYOR
SCALE 1" = 200' SEPT. 1924

709567 44.65



I hereby certify to having surveyed the property as described on this plat, as GROUNDS OF THE COLLEGE OF ST. CATHERINE and have placed concrete monuments at the corners of every block as shown, and the same is correct. There is no low wet ground nor any travelled road or easement on or across same, except as shown.

STATE OF MINNESOTA } ss. On this 14th day of November A.D. 1924, before me personally appeared, Robert Holterhoff to me well known and acknowledged that he executed the foregoing certificate as his own free act and deed.

Robert Holterhoff SURVEYOR
 ELSIE G. T. ANDERSON, Notary Public, Ramsey Co., Minn. My Commission expires Oct. 4, 1927.
 My Commission Expires Oct. 4, 1927.

This is to certify that the COLLEGE OF ST. CATHERINE, a Corporation, incorporated under the laws of the State of Minnesota, proprietors of Lots 5, 6, 7, 8, the West 1/2 of Lot 16 and vacated part of Prior Avenue, Reserve Park Garden Lots; also all of Albert Lea College Addition and vacated streets and alleys therein; also Lot 15 Reserve Park Garden Lots except Prior Avenue and Bayard Avenue; also Lots 1, 2, 3, 4, 5, 6, 7 and vacated alley in Block 1, Plat 3 State Park Addition and Lot 8 Block 1, Plat 2 State Park Addition, has caused the same to be platted, and hereafter known as GROUNDS OF THE COLLEGE OF ST. CATHERINE and hereby dedicates to the public, for public use forever, all the streets, avenues and alleys as herein indicated.

In Testimony Whereof, The said corporation has caused these presents to be executed in its corporate name by its President and its Secretary, and its corporate seal to be hereunto affixed this 14th day of November A.D. 1925.
 By *Sister St. Helena* Pres. COLLEGE OF ST. CATHERINE
 By *Sister Clara* Sec. COLLEGE OF ST. CATHERINE

STATE OF MINNESOTA } ss. On this 18th day of October A.D. 1925, before me, a Notary Public within and County of Ramsey for said County, personally appeared *Sister Antonia* and *Sister Clara* to me personally known, who, being each by me duly sworn, did say that they are respectively the President and Secretary of the College of St. Catherine, the corporation named in the foregoing instrument, and that the seal affixed to said instrument is the corporate seal of said corporation, and that said instrument was signed and sealed in behalf of said corporation by authority of its Board of Trustees and said *Sister Antonia* and *Sister Clara* acknowledged said instrument to be the free act and deed of said corporation.

Sister St. Helena Notary Public, Ramsey Co., Minn. My Commission expires Oct. 31, 1931.
 Accepted and approved this 14th day of April A.D. 1926
Eng. H. B. Keenan
E. J. Madam
F. L. Brown
John W. ...
 PLAT COMMISSIONERS
 COMMISSIONER OF PUBLIC WORKS
 Accepted by the Council APR 15 1926
 APR 15 1926

Approved *A. J. ...* City Clerk

All Installments of Assessments due on the within property to date are paid
 MAY 14 1926
 DEPARTMENT OF FINANCE
 ST. PAUL, MINN.
Schneider

Taxes for the year of 1925 on the lands described within PAID
 MAY 14 1926
 HESA M. OBST, Treasurer,
 RAMSEY COUNTY, MINN.
Stundberg

STATE OF MINNESOTA } ss. County of Ramsey
 Office of the Register of Deeds
 This is to certify that the within instrument was filed for record in this office at St. Paul on the 17 day of May A. D. 1926 at 4:10 P.M. and that the same was duly entered in book 75 of *Map 100* Page 2
J. J. ... Register of Deeds
 Deputy

This plat document is an UNOFFICIAL copy of a Subdivision Plat or Registered Land Survey and is made available for information purposes only.
 To obtain an official copy please contact the Ramsey County Recorder's Office.

TAXES PAID
 And Transfer Entered
 MAY 15 1926
 GEO. J. RIES,
 Auditor, Ramsey County, Minn.
... Deputy.

709567