

# MIDWAY HOSPITAL, ADD.

SURVEYED BY ROBERT HOLTERHOFF.

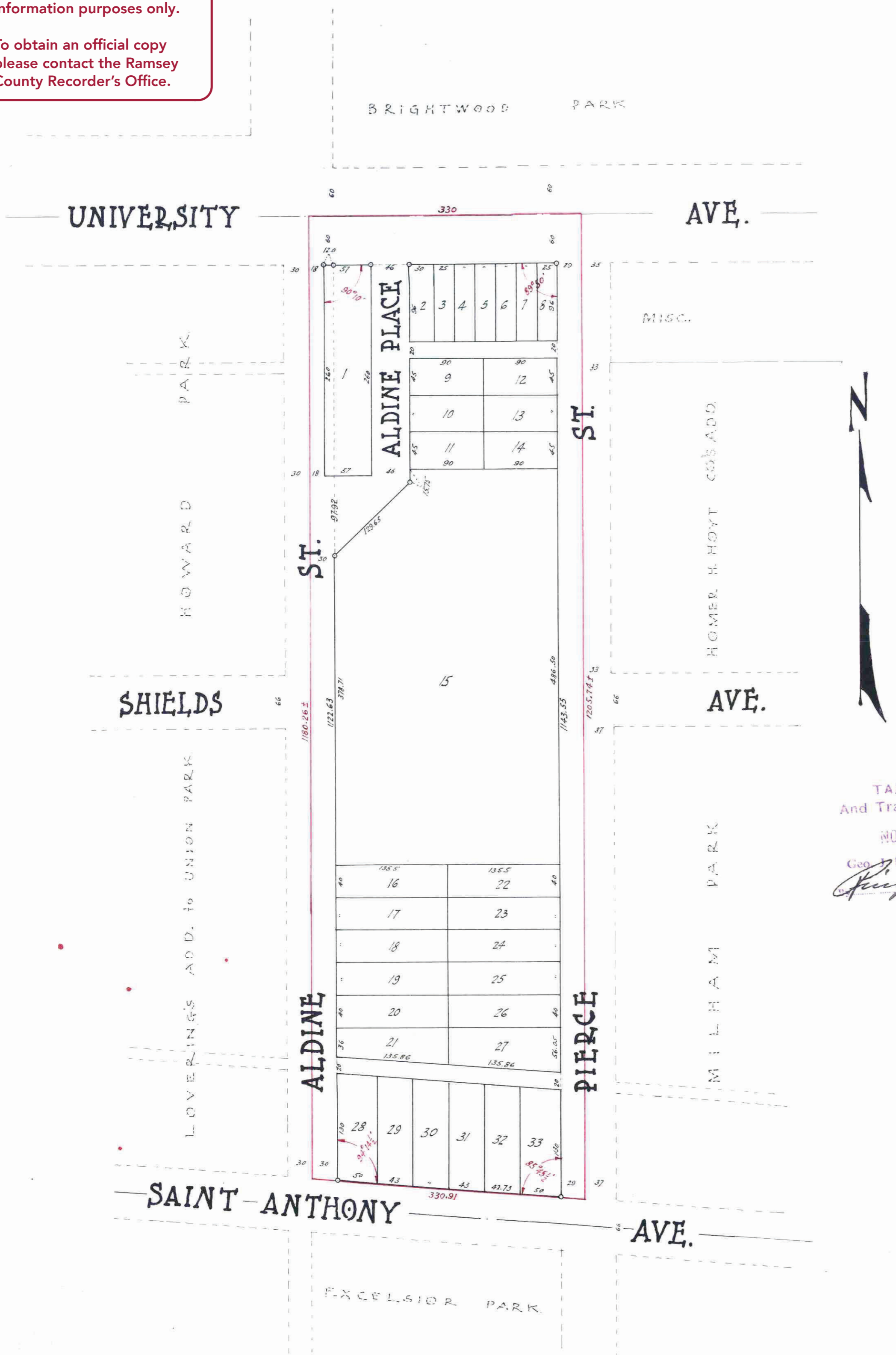
Scale: 1 inch = 100 feet.

This plat document is an UNOFFICIAL copy of a Subdivision Plat or Registered Land Survey and is made available for information purposes only.

To obtain an official copy please contact the Ramsey County Recorder's Office.



STATE OF MINNESOTA  
 County of Ramsey  
 Office of the Register of Deeds  
 This is to certify that the within instrument was filed for record in this office at St. Paul the 20 day of Nov. 1925 at 10:00 A.M. and that the same is duly recorded in Book 44 Page 10  
*John P. Gledhill*  
 Register of Deeds



I hereby certify to having surveyed the property as described on this plat, as Midway Hospital Add. and have placed iron monuments at the corners as hereon indicated, and the same is correct.

*Robert Holterhoff*  
 Surveyor

State of Minnesota } ss  
 County of Ramsey } On this 4th day of Nov. A.D. 1925 before me personally appeared, Robert Holterhoff, to well known, and acknowledged that he executed the foregoing certificate as his own free act and deed.

*Mark W. Goodell*  
 Notary Public, Ramsey County, Minnesota  
 My Commission expires 19...

This is to certify that the Northwestern Baptist Hospital Association, a Corporation, existing under and pursuant to the laws of the State of Minnesota, owners of all that tract of land lying between University Avenue, Pierce Street, St. Anthony Avenue and Aldine Street in the City of St. Paul and more particularly described as follows: Beginning at a point on the line between the E 1/2 and W 1/2 of SE 1/4 Sec. 33, T. 29, R. 23 where said line is intersected by N. line of St. Anthony Avenue; thence N. on line between said E 1/2 and W 1/2 of said SE 1/4 180.26 feet more or less to 1/4 sec. line running E and W across said Sec. 33; thence E. along said 1/4 sec. line 330 feet; thence S. and parallel with said line between E 1/2 and W 1/2 of SE 1/4 of Sec. 33 1205.74 feet more or less to N. line of said St. Anthony Avenue; thence W. along N. line of St. Anthony Avenue 330.91 feet to place of beginning, owned of record by The Mounds Park Sanitarium Association, subject to no encumbrance, has caused the same to be platted, and hereafter known as Midway Hospital Add., as shown on this plat, and hereby dedicates to the public, for public use forever, all the streets, avenues and alleys, as hereon indicated.

In testimony whereof, the said Corporation has caused these presents to be executed in its corporate name by its respective President and Secretary, and its corporate seal to be hereunto affixed this 4th day of NOVEMBER A.D. 1925

In presence of:  
*Robert Paul* President  
*George S. ...* Secretary  
 Northwestern Baptist Hospital Association

State of Minnesota } ss  
 County of Ramsey } On this 4th day of NOVEMBER A.D. 1925 before me personally appeared, *George S. ...* and *E. Ovid ...* to me well known, who being duly sworn did say they are the President and Secretary, respectively, of the Northwestern Baptist Hospital Association, the Corporation mentioned in the foregoing instrument and that the seal affixed to said instrument is the corporate seal of said Corporation by authority of the duly authorized officers and acknowledged said instrument to be the free act and deed of said Corporation.

*A. M. Calvin*  
 Notary Public, Ramsey County, Minn.  
 My Commission expires 19...  
 A. M. CALVIN, Notary Public, Ramsey County, Minn. My Commission Expires Oct. 15, 1930.

Accepted and approved this 13th day of November A.D. 1925

Accepted by the Council Nov. 13 1925

*George S. ...*  
*E. Ovid ...*  
*J. L. Brown*  
 PLAT COMMISSIONERS  
 COMMISSIONER OF PUBLIC WORKS

Approved Nov. 13 1925  
*J. M. Slogan*  
 City Clerk.

TAXES PAID  
 And Transfer Entored  
 NOV 19 1925  
 Geo. W. Ries, Co. Auditor  
*George W. Ries* Deputy

NOV 20 1925  
 DEPARTMENT OF FINANCE  
*Schmidler*  
 Taxes for the year of 1924 on the lands described within PAID  
 NOV 19 1925  
 ELSA M. OBST, Treasurer, RAMSEY COUNTY, MINN.

620829