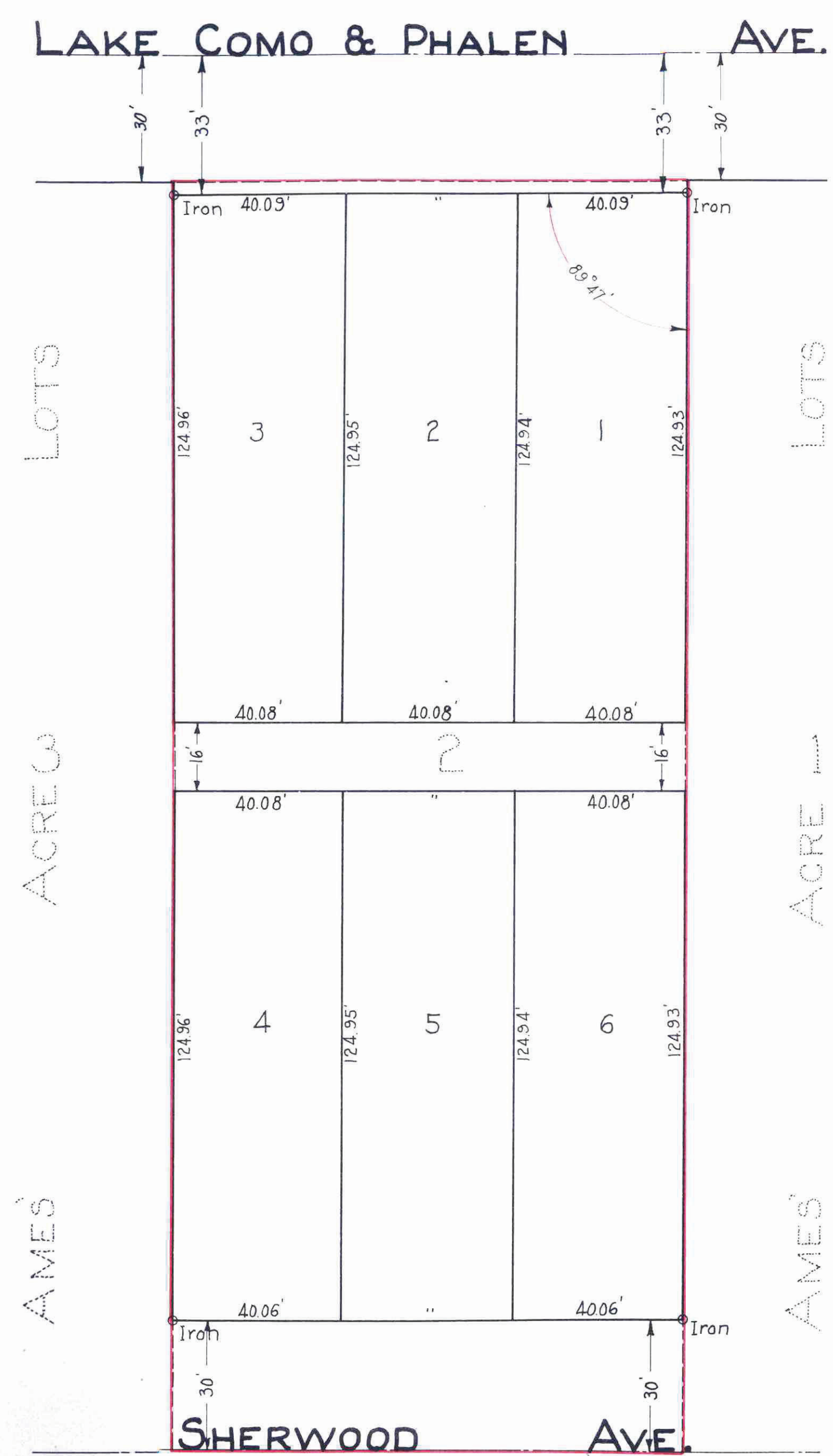


SOETE'S SUBDIVISION

SCALE: 25' = 1 inch



This plat document is an UNOFFICIAL copy of a Subdivision Plat or Registered Land Survey and is made available for information purposes only.

To obtain an official copy please contact the Ramsey County Recorder's Office.



I hereby certify to having surveyed the property as described on this plat, as Soete's Sub-division and have placed iron monuments at the corners of every block, as shown, and the same is correct.

William F. Brettschneider
SURVEYOR

STATE OF MINNESOTA } s.s.
County of Ramsey }

On this 4th day of Sept, A.D. 1925, before me, a Notary Public, within and for said County, personally appeared William F. Brettschneider, to me well known and acknowledged that he executed the foregoing certificate, as his own free act and deed.

Mark W. Warduff
NOTARY PUBLIC

This is to certify that William Fred Soete and Clarrissa Soete, his wife, proprietors of lot 2 block 2 Ames Acre Lots have caused the same to be platted and hereafter known as Soete's Subdivision, as shown on this plat, and hereby dedicate to the public for public use forever, all the streets, avenues and alleys, as hereon indicated.

Witness our hands and seals this 9th day of September, A.D. 1925.
in presence of

Louis H. Killamur William Fred Soete
J. P. Perry Clarrissa Soete
D. J. [unclear]

STATE OF MINNESOTA } s.s.
County of Ramsey }

On this 9th day of September, A.D. 1925, before me, personally appeared William Fred Soete and Clarrissa Soete, his wife, to me well known and acknowledged that they executed the foregoing certificate as their own free act and deed.

Louis H. Killamur
NOTARY PUBLIC

Accepted and approved this 18th day of September, A.D. 1925.

George B. [unclear]
J. B. Brown
E. J. [unclear] } PLAT COMMISSIONERS
John [unclear] Commissioner of Public Works

Accepted by the Council Sept 19, 1925
Approved Sept 19, 1925

TAXES PAID
And Transfer Entered
SEP 25 1925
Geo. J. Ries, Co. Auditor
Reingraed Deputy

[Signature]
City Clerk

SEP 2 1925
DEPARTMENT OF TREASURY
Schmidler

Taxes for the year or 1924 on lands described within this plat
SEP 19 1925
E. L. M. O'Rourke, Treasurer
[Signature]

STATE OF MINNESOTA } s.s.
County of Ramsey }
Office of the Register of Deeds
This is to certify that the foregoing instrument was filed for record in the office of St. Paul on the 28 day of September, A. D. 1925, at 1 o'clock P. M., and that the same was duly recorded in book 444 of [unclear] Page 57
By [Signature]
Register of Deeds.
Deputy.

693723