

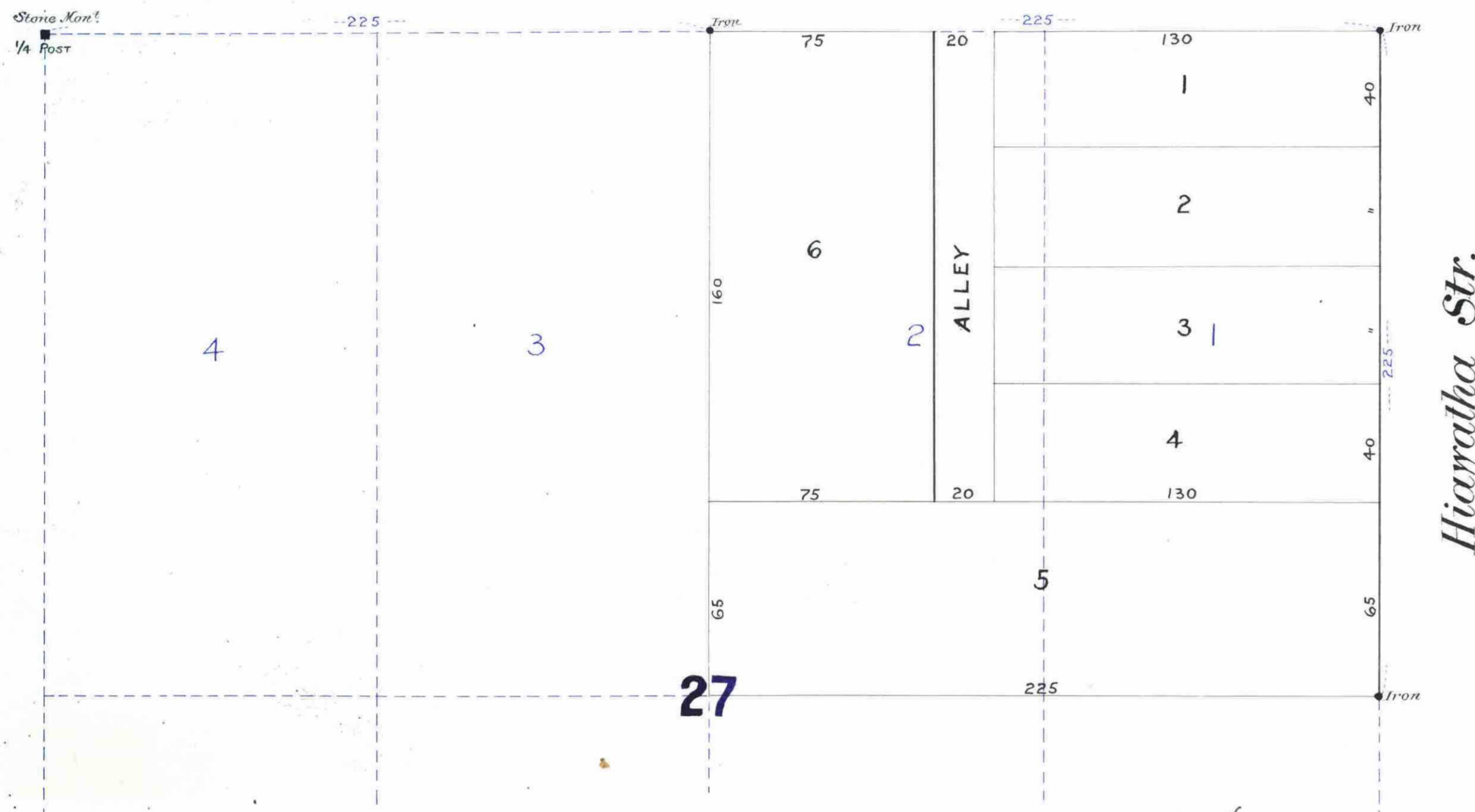
KRAUCH'S REAR!

of Lots 1 & 2 Blk 27
SUBURBAN HILLS ADD. TO ST PAUL.

Scale 40 feet to 1 inch.

STATE OF MINNESOTA,
County of Ramsey,
Office of the Register of Deeds.
This is to certify that the within
instrument was filed for record
in this Office, at St. Paul, on the
7th day of April, A. D. 1887, at
10 o'clock P. M., and
that the same was duly recorded in
Book 6 of _____
pages 37, 38, 39.
By _____
Register.

Burns Ave.



I hereby certify to having surveyed and platted the property as described on this map as Krauch's Rear! and have placed iron monuments at the corners of each and every block as shown on this map, and the same is correct.

Max Toltz
Surveyor.

State of Minnesota County of Ramsey.
On this 24th day of April A.D. 1887,
personally appeared before the undersigned
Max Toltz to me well known, and acknow-
ledged that he executed the foregoing cer-
tificate as his own free act and deed.

Wm J. Bickel
Notary Public,
Ramsey Co., Minn.

Accepted and approved this 30th
day of April A. D. 1887.

J. P. Johnson
Geo. J. Hanky
W. R. ...
Plat Commissioners

This is to certify that Wm Krauch and
Sophie Krauch his wife, and Walter Krauch
and Minnie Krauch his wife, proprietors
of Lots 1 & 2 Blk 27, Suburban Hills Add to
St. Paul, have caused the same to be sur-
veyed and platted, and hereafter known as
Krauch's Rear! as shown by this plat and
hereby dedicate to the public, and for the
public use forever, all the streets, avenues
and alleys, as herein indicated.

Witness our hands and seals, this twentieth
day of April 1887.

I hereby recommend the acceptance of the
within plat by the common council.

Taxes paid May 4 1887
M. J. Kain

County Auditor
Ramsey Co., Minn.

Assessments

City Treasurer,
St. Paul.

CITY TREASURER'S OFFICE
ST. PAUL, MINN.
MAY 6 1887
ASSESSMENTS PAID

Accepted by the common council of the
City of St. Paul on the 23 day of
May 1887.

OFFICE OF
COUNTY TREASURER,
ST. PAUL, MINN.
APR 30 1887
1886 TAX PAID.
F. A. RENE, Cl. Treas.

City Engineer.

City Clerk,
Amos ...

In presence of

Wm Krauch
Sophie Krauch
Walter Krauch
Minnie Krauch

Wm Krauch
Sophie Krauch
Walter Krauch
Minnie Krauch

State of Minnesota, County of Ramsey. On this
twentieth day of April A. D. 1887, personally came
before me, Wm Krauch and Sophie Krauch his wife
and Walter Krauch and Minnie Krauch his wife
to me well known and they acknowledged that
they executed the foregoing certificate for the
uses and purposes therein expressed.

Wm Krauch
Notary Public,
Ramsey Co., Minn.