

# MULLIKEN ADDITION

SURVEYED BY ROBERT HOLTERHOFF  
Scale 1"=40'

I hereby certify to having surveyed the property as described on this plat, as MULLIKEN ADDITION and have placed iron monuments at the corners of every block, as shown, and the same is correct. There is no low wet ground nor any travelled road or easement on or across same, except as shown.

Accepted and approved this 21<sup>st</sup> day of October A.D. 1924.

STATE OF MINNESOTA }  
County of Ramsey } SS On this 21<sup>st</sup> day of October A.D. 1924, before me, personally appeared, Robert Holterhoff, to me well known, and acknowledged that he executed the foregoing certificate as his own free act and deed.

*George H. Harold*  
*F. J. Brown*  
*E. J. Madigan* } PLAT COMMISSIONERS  
*Johnston* } COMMISSIONER OF PUBLIC WORKS

*Ernie G. Anderson*  
Ernie G. ANDERSON,  
Notary Public, Ramsey Co. Minn. My Commission expires Notary Public, Ramsey County, Minn.  
My Commission Expires Oct. 4, 1927.

Accepted by the Council Oct. 22<sup>nd</sup> 1924

This is to certify that W.K. Mulliken and Sophie K. Mulliken, his wife, proprietors of the  $\frac{1}{2}$  of  $\frac{3}{4}$  of  $\frac{1}{2}$  of N.E.  $\frac{1}{4}$  of S.E.  $\frac{1}{4}$  Sec. 8, T28N-R23W, have caused the same to be platted, and hereafter known as MULLIKEN ADDITION, as shown on this plat, and hereby dedicate to the public for public use forever, all the streets, avenues and alleys as hereon indicated.

Approved Oct. 23<sup>rd</sup> 1924

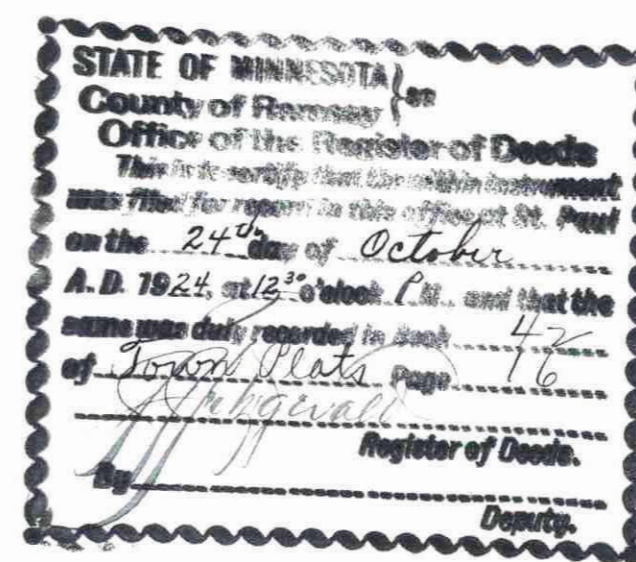
*J. M. Hogan*  
CITY CLERK

In presence of  
*W.K. Mulliken*  
*Sophie K. Mulliken*

670208

STATE OF MINNESOTA }  
County of Ramsey } SS On this 21<sup>st</sup> day of October A.D. 1924, before me, personally appeared, W.K. Mulliken and Sophie K. Mulliken, his wife, to me well known, and acknowledged that they executed the foregoing certificate as their own free act and deed.

*Ernie G. Anderson*  
Notary Public, Ramsey Co. Minn. My Commission expires Notary Public, Ramsey County, Minn.  
My Commission Expires Oct. 4, 1927.

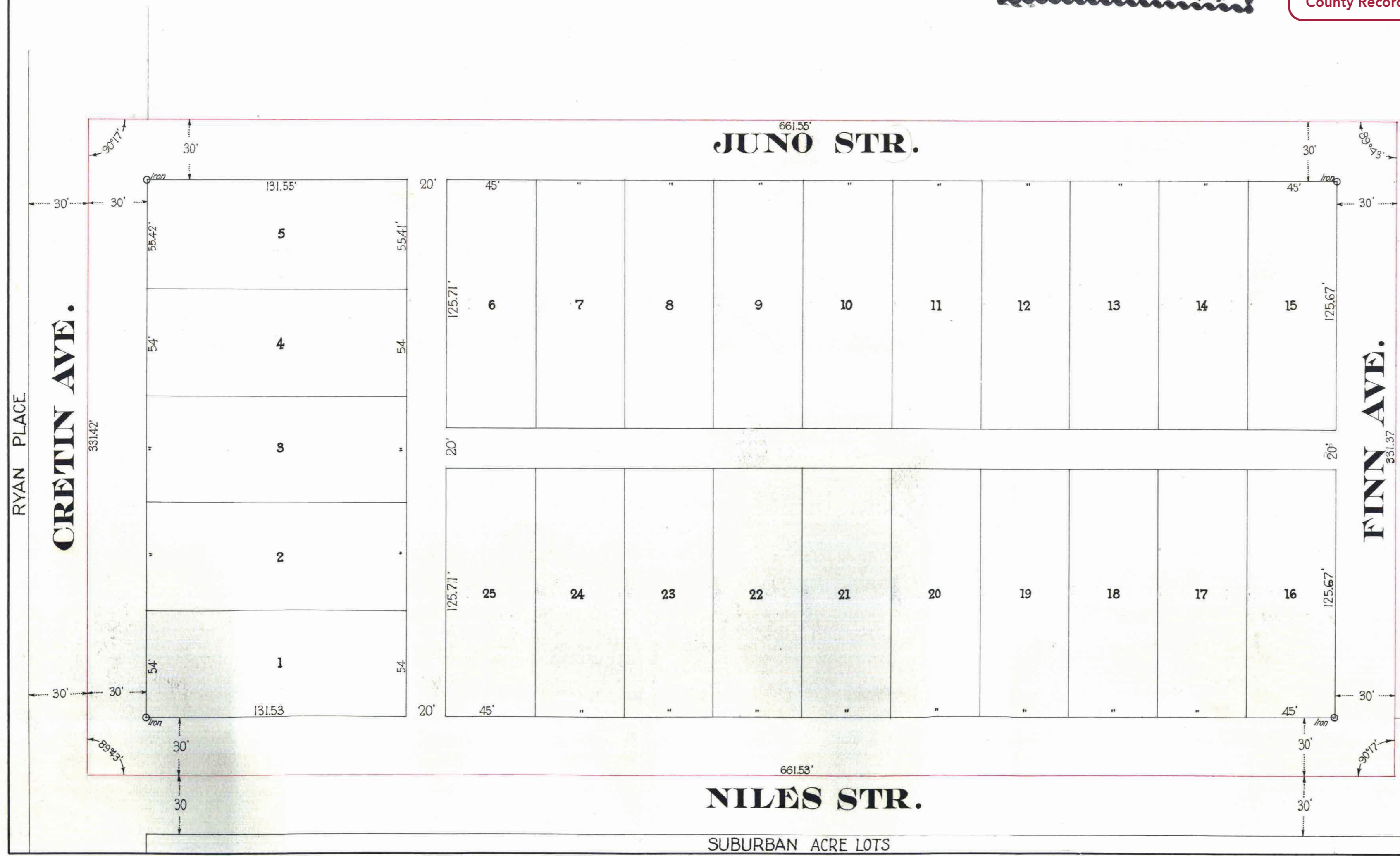


This plat document is an UNOFFICIAL copy of a Subdivision Plat or Registered Land Survey and is made available for information purposes only.

To obtain an official copy please contact the Ramsey County Recorder's Office.



670208



Taxes for the year of 1923 on the lands described within PAID,  
OCT 2 1924  
ELSA M. OBST, Treasurer  
RAMSEY COUNTY, MINN.

OCT 2 1924  
DEPARTMENT OF FINANCE  
L. B. SCHMIDLER, Treasurer  
Schmidler