

CITY TREASURER'S OFFICE
ST. PAUL, MINN.
April 15 1882
ASSESSOR ST PA
C. H. Beck

HIMPREY'S

ADDITION

to St Paul.

described in the annexed certificate of the St. Paul, Washburn & Elevator Co.
I also certify that the diagonal shown upon the subdivision of Block 13 and the lots One hundred fifty of Block 27 of the said addition is correct.

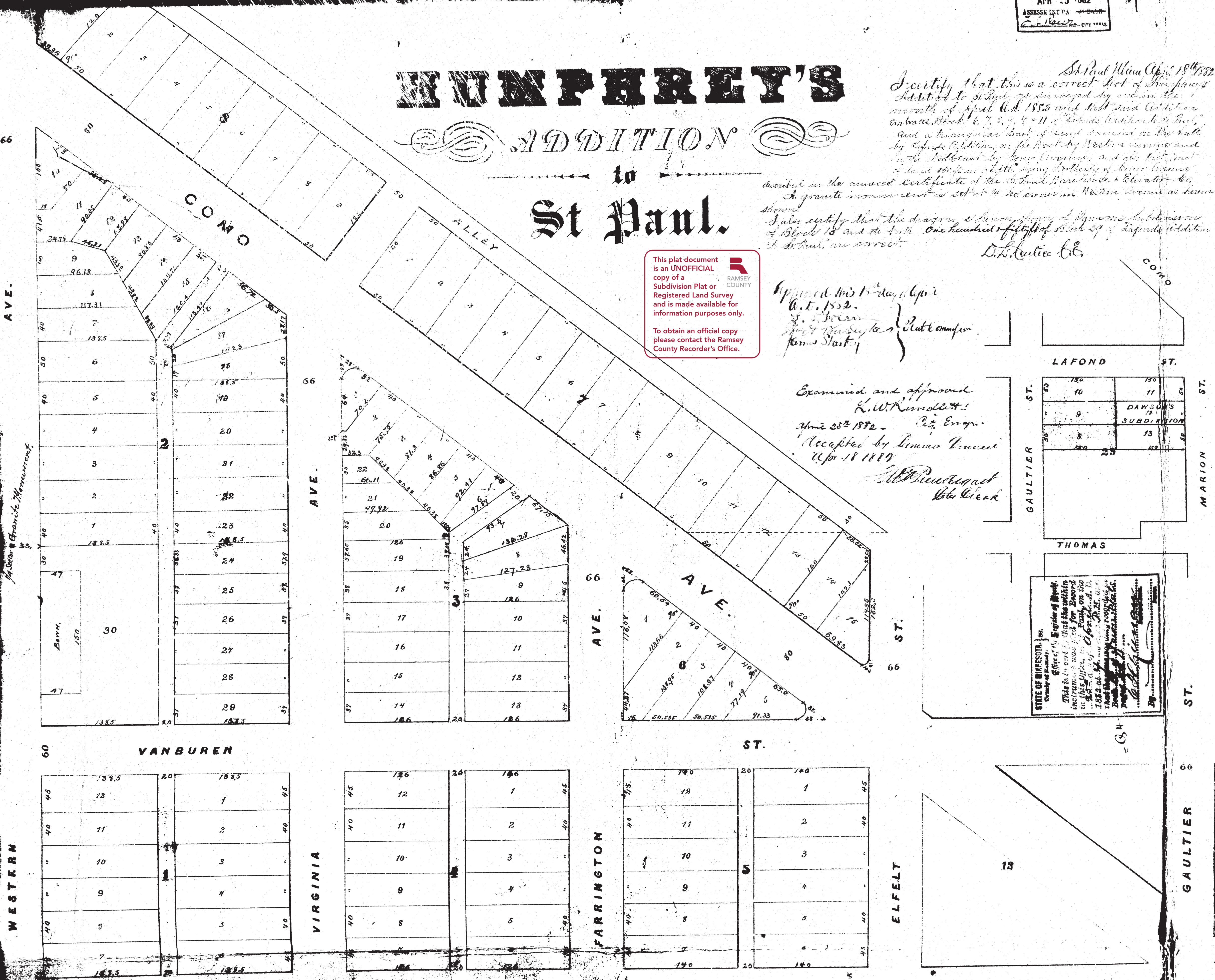
D. L. Curtis C.E.

Approved this 15 day of April
A. D. 1882.
J. J. Brown
City Recorder
James Starky

Examined and approved
L. W. Kimmelhoff
April 28th 1882 - City Engr.
Accepted by Common Council
April 18 1882

W. P. Rice
City Clerk

This plat document is an UNOFFICIAL copy of a Subdivision Plat or Registered Land Survey and is made available for information purposes only.
To obtain an official copy please contact the Ramsey County Recorder's Office.



STATE OF MINNESOTA, County of Ramsey.
I, J. J. Brown, City Recorder, do hereby certify that the within and foregoing plat of subdivision of Block 13 and the lots One hundred fifty of Block 27 of the said addition is correct.

Now all men by these presents that the said Paul & Co. have and do hereby certify that the within and foregoing plat of subdivision of Block 13 and the lots One hundred fifty of Block 27 of the said addition is correct.

State of Minnesota
County of Ramsey
I, Vincent D. Wald, do hereby certify that the within and foregoing plat of subdivision of Block 13 and the lots One hundred fifty of Block 27 of the said addition is correct.

State of Minnesota
County of Ramsey
I, Vincent D. Wald, do hereby certify that the within and foregoing plat of subdivision of Block 13 and the lots One hundred fifty of Block 27 of the said addition is correct.