

# BERKELEY PLACE

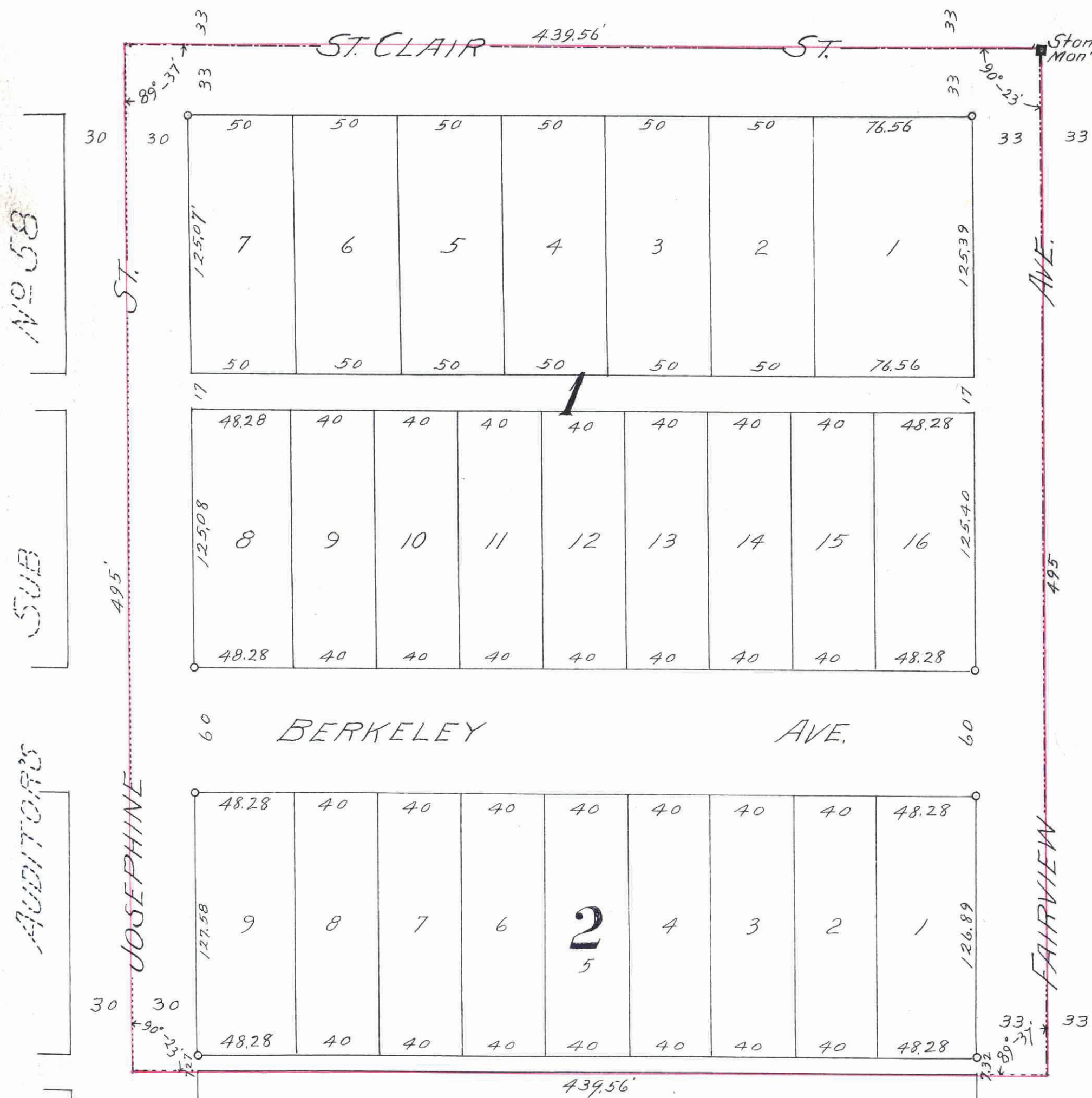
Scale: 50' to 1"

o Indicates Iron Monument

Surveyed By  
T. Milton Fowble, Surveyor  
St. Paul, Minn.

634013

UNDERWOOD'S 2<sup>nd</sup> ADD.    MAGALESTER PLACE



STATE OF MINNESOTA  
County of Ramsey  
Office of the Register of Deeds  
This is to certify that the within instrument was filed for record in this office at St. Paul on the 1<sup>st</sup> day of May A. D. 1923 at 3:20 o'clock P. M. and that the same was duly recorded in Book 40 of Josephine Pages 5  
By *T. Milton Fowble*  
Register of Deeds.  
Deputy

State of Minnesota  
Department of Finance  
MAY 9 1923  
PAUL, MINN.  
Grove

I hereby certify to having surveyed and platted the property described on this plat as BERKELEY PLACE and have placed iron monuments as indicated hereon, and the same is correct.

There is no swamp or wet ground on this land nor any roads or public thoroughfares across same except as hereon shown.

*T. Milton Fowble*  
Surveyor.

State of Minnesota } ss  
County of Ramsey } On this 21<sup>st</sup> day of April A.D. 1923, before me personally appeared T. Milton Fowble, to me known to be the person who executed the foregoing certificate and acknowledged that he executed the same as his free act and deed.

*Silas E. Foxman*  
Notary Public, Ramsey County, Minnesota  
My Commission expires January 27, 1928.  
SILAS E. FOXMAN,  
Notary Public, Ramsey County, Minn.  
My Commission Expires Jan. 27, 1928.

This is to certify that Emma J. Sandberg and Alfred M. Sandberg, her husband, owners of the North 7.50 chains of the East 6.66 chains of the N.E. 1/4 of the N.E. 1/4 of the N.W. 1/4 of Section 9, T.28 N., R. 23 W. Ramsey County, Minnesota, have caused the same to be surveyed and platted, and hereafter known as BERKELEY PLACE, as shown by this plat, and hereby dedicate to the public for public use forever, all the streets, avenues and alleys as hereon shown.

Witness our hands and seals this 21<sup>st</sup> day of April A.D. 1923  
In presence of *R. J. Young*

*Emma J. Sandberg*  
*Alfred M. Sandberg*

State of Minnesota } ss  
County of Ramsey } On this 4<sup>th</sup> day of April A.D. 1923, before me personally appeared Emma J. Sandberg and Alfred M. Sandberg, her husband, to me known to be the persons who executed the foregoing instrument, and did each acknowledge, for herself and himself respectively, that they executed the same as their free act and deed.

*R. J. Young*  
Notary Public, Ramsey County, Minnesota  
My Commission expires

Accepted and approved this 4<sup>th</sup> day of April A.D. 1923.

*Charles H. Brown*  
*James Jordan*  
*W. J. Peter* } Plat Commissioners  
Commissioner of Public Works.

*Reynold*

Accepted by the Council May 5<sup>th</sup> A.D. 1923.  
Approved May 5<sup>th</sup> A.D. 1923.

*Henry Olson*  
City Clerk.

This plat document is an UNOFFICIAL copy of a Subdivision Plat or Registered Land Survey and is made available for information purposes only.  
To obtain an official copy please contact the Ramsey County Recorder's Office.

634013

*Jimmernann*