

JOHN NAGLE'S SUBDIVISION

Scale 1" to 20'

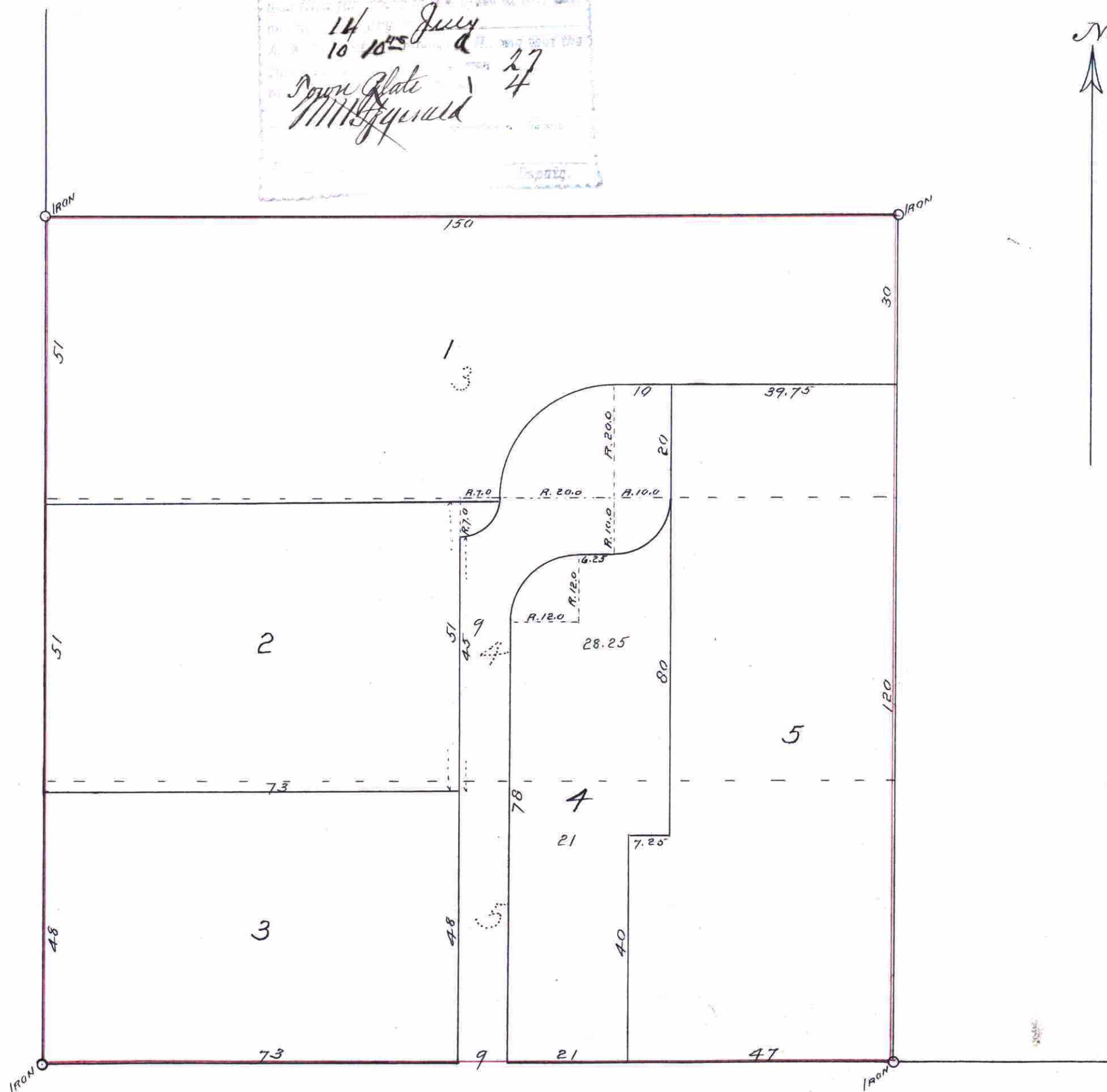
Jens Pedersen
Surveyor

391819

14 July
16 10th July
27
4

Deane Plate
Mississippi

LIVINGSTONE AVE.



DELOS ST.

I hereby certify to having surveyed and platted the property as described on this map as JOHN NAGLE'S SUBDIVISION and have placed iron monuments at the corners thereof, as shown on this map, and the same is correct.

Jens Pedersen
Surveyor

State of Minnesota } ss
County of Ramsey }

On this 5th day of Mar 1910 personally appeared before me, the undersigned, Jens Pedersen, to me well known, and acknowledged that he executed the foregoing certificate as his own free act and deed.

A. Moore
Notary Public, Ramsey County, Minn.
My commission expires Oct. 28, 1912

This is to certify that Catherine Nagle, widow, proprietor of Lots 3, 4 and 5 of Block 22, West St. Paul Proper, has caused the same to be surveyed and platted and hereafter known as JOHN NAGLE'S SUBDIVISION, as shown on this plat, and hereby dedicates to the public, and for the public use forever, the streets and alleys as hereon indicated.

Witness my hand and seal this 10th day of February 1910.

In presence of
Jens Pedersen
Thomas R. Nagle

Catherine Nagle (Seal)

State of Minnesota } ss
County of Ramsey }

On this 10th day of February 1910 personally came before me, the undersigned, Catherine Nagle, to me well known, and acknowledged that she executed the foregoing certificate as her own free act and deed.

Richard A. Walsh
Notary Public, Ramsey County, Minn.
My commission expires July 8, 1914

Accepted and approved this 5th day of March 1910

J. Amay } Plat Commissioners
James Jordan }
City Engineer
Accepted by the Board of Aldermen March 16 1910
" Assembly March 17 1910
Approved March 23 1910

Geo. J. Redington
City Clerk

Taxes for the year 1909 on the lands described within paid.
JUL 12 1910
JESSE J. JENSEN, COUNTY TRESPASHER

TAXES PAID
AND TRANSFER ENTERED
JUL 12 1910
EDW. G. KRAHMER, Co. Auditor,
By Knowlton, Deputy.

CITY TREASURER'S OFFICE,
ST. PAUL, MINN.
JUL 13 1910
Assessment Paid
A. F. SWORTH
By Pulling

391819