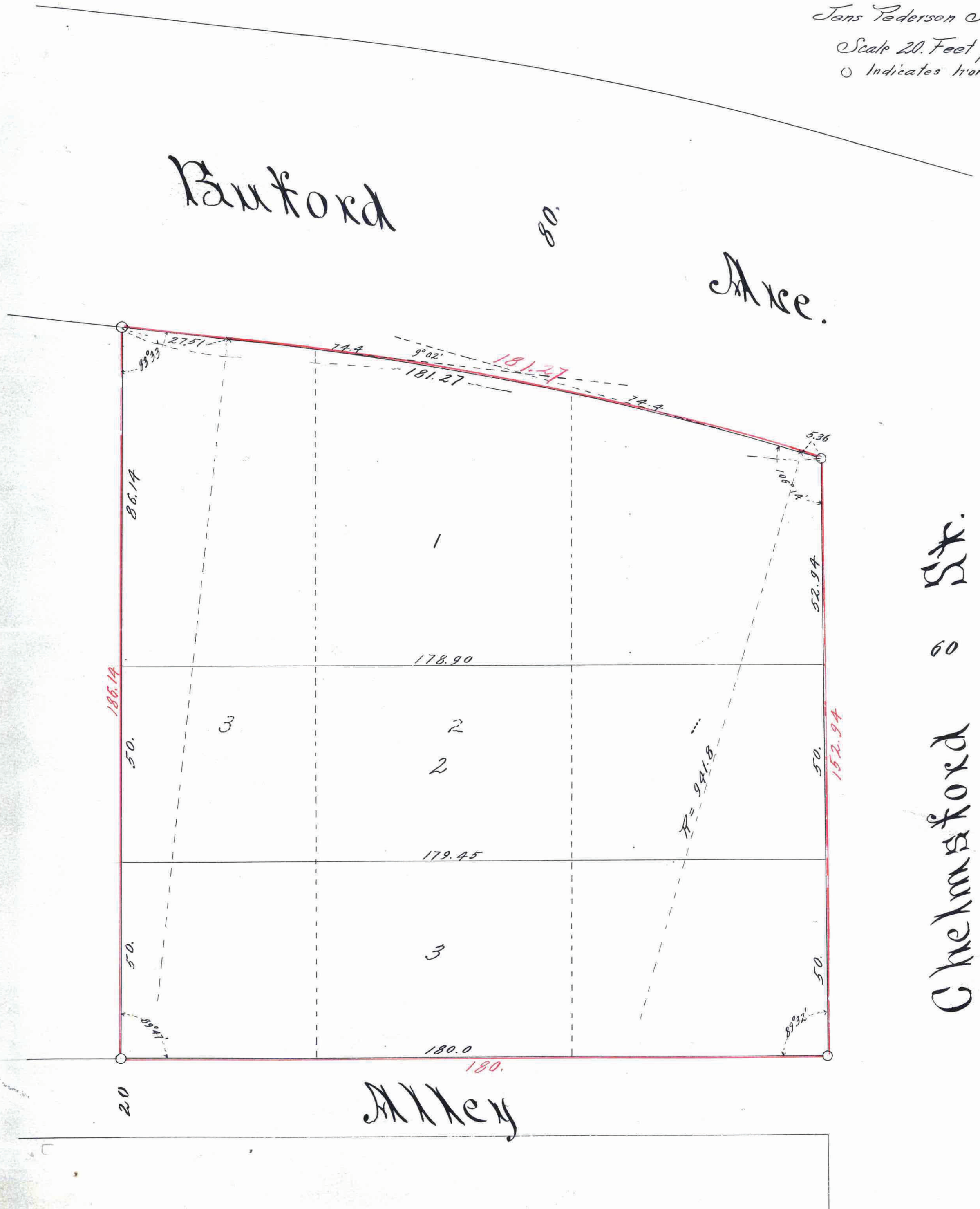


# GREAVES RE-AR.

Jens Pederson Surveyor  
Scale 20 Feet per inch.  
O Indicates Iron



I, hereby certify to having surveyed and platted the properly described on this map as, Greaves Re-ar, and have placed irons at the corners as shown on this map, and the same is correct.  
Jens Pederson Surveyor

State of Minnesota } On this 29<sup>th</sup> day of Dec.  
County of Ramsey } A.D. 1916, personally appeared  
before the undersigned, Jens Pederson, to me well  
known and acknowledged that he executed the  
foregoing certificate as his own free act and deed.  
W. Moore  
Notary Public, Ramsey Co., Minn.  
My Commission expires, Oct 29, 1919.

This is to certify that Glenn H. Greaves, single, proprietor of Lots 1, 2 and 3, Block 20, St. Anthony Park North, has caused the same to be surveyed and platted and hereafter known as, Greaves Re-ar, as shown by this plat and hereby dedicates to the public and for public use forever, all the streets, avenues and alleys, as herein indicated.  
Witness my hand and seal this 29<sup>th</sup> day of November 1916  
In presence of, Jens Pederson, Glenn H. Greaves  
J. R. Sawyer

State of Minnesota } On this 29<sup>th</sup> day of November A.D. 1916, personally  
County of Ramsey } came before me the undersigned, Glenn H. Greaves, to me  
well known, and he acknowledged that he executed the  
foregoing certificate as his own free act and deed.  
J. R. Sawyer Notary Public, Ramsey County, Minn.  
My Commission expires May 22, 1923.

Accepted and approved this 11<sup>th</sup> day of December A.D. 1916.  
George B. Keisler } Plat  
Charles H. Thomson } Commissioners.  
James J. Fox }  
Commissioner of Public Works.

Accepted by the Council Dec 18<sup>th</sup> 1916  
Approved Dec 18<sup>th</sup> 1916  
J. J. Fox City Clerk

TAXES PAID  
AND TRANSFER ENTERED  
DEC 27 1916  
GEO. A. RIES, COUNTY AUDITOR  
By J. J. Fox

All installments of Assessments due on  
the within property to date, are paid  
DEC 27 1916  
DEPARTMENT OF FINANCE  
S. A. FARMER, COUNTY COM. FINANCE,  
By J. Schneider

Taxes for the year of 1915 on the  
lands described within PAID  
DEC 27 1916  
Murray A. Whalley, Treasurer  
RAMSEY COUNTY, MINN.  
By J. J. Fox

This plat document is an UNOFFICIAL copy of a Subdivision Plat or Registered Land Survey and is made available for information purposes only.  
RAMSEY COUNTY  
To obtain an official copy please contact the Ramsey County Recorder's Office.

DOCUMENT NUMBER 26075  
CERTIFICATE NUMBER 22001  
BOOK 57, PAGE 223  
STATE OF MINNESOTA  
Office of the Registrar of Titles  
Deputy of Registrar  
This is a copy of said plat and its recording was made in the office of St. Paul, on the 29<sup>th</sup> day of Dec. A. D. 1916  
By H. H. J. Fox, Registrar of Titles.  
By J. J. Fox, Deputy.

26075