

FRANKSON'S SUBDIVISION

Scale 50' = 1"

J. M. Simmons  
Surveyor

I hereby certify to having surveyed and platted the property as described on this map as Frankson's Subdivision, and have placed iron monuments as shown hereon, and the same is correct  
J. M. Simmons  
Surveyor

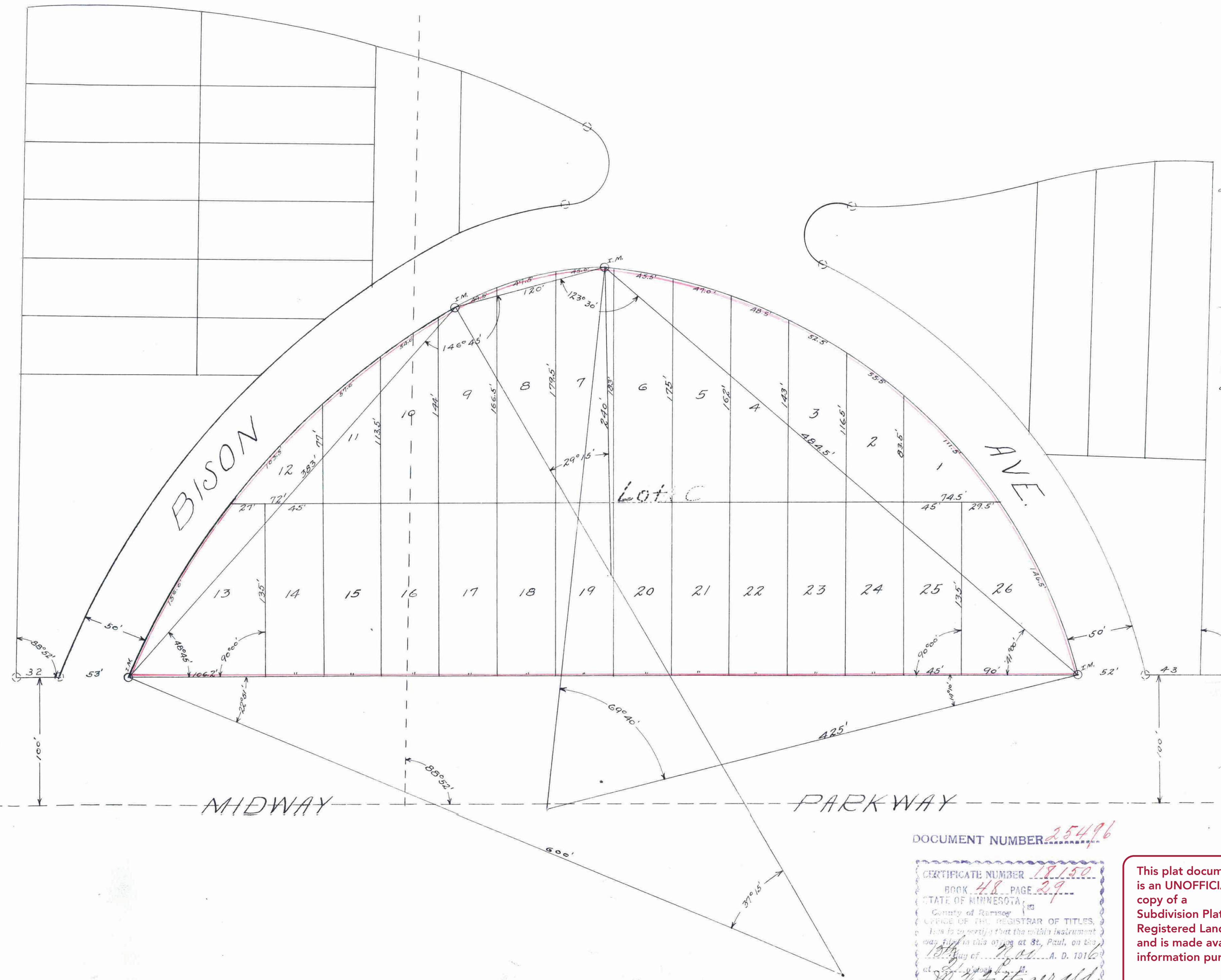
State of Minnesota }  
County of Ramsey } On this 31st day of December A.D. 1915 personally appeared before me, the undersigned J. M. Simmons and acknowledged that he executed the certificate as his free act and deed.  
Francis Garlock  
Notary Public, Ramsey Co., Minnesota.  
My commission expires May 11-1917

This is to certify that Thomas Frankson and Hannah Frankson, his wife, and August E. Robertson, Joseph D. Robertson, Mary L. Aydt, Sarah F. Aydt, Emma R. Schmitz and John L. Robertson, Assigns, owners of Lot C Frankson's Como Park Addition, have caused the same to be surveyed and platted and here after known as Frankson's Subdivision. Witness our hands and seals this 31st day of December A.D. 1915 - In presence of August E. Robertson, Joseph D. Robertson, Mary L. Aydt, Sarah F. Aydt, Emma R. Schmitz, and John L. Robertson, Assigns, owners of Lot C Frankson's Como Park Addition, Hannah Frankson, his wife, and August E. Robertson, Assigns, owners of Lot C Frankson's Como Park Addition.  
Francis Garlock  
Notary Public, Ramsey Co., Minnesota.  
My commission expires May 11-1917

Accepted and approved this 12th day of September A.D. 1916  
George E. Berwick }  
Charles H. Johnson } Plat Commissioners  
James W. Jordan }  
Commissioner of Public Works  
Accepted by the Council City of St. Paul, Minn. Sept. 14th - 1916  
Approved Sept 14th 1916  
John A. Farley  
City Clerk

TAXES PAID  
AND TRANSFER ENTERED  
SEP 30 1916  
RECORDS & COUNTY CLERK  
St. Paul, Minn.

SEP 30 1916  
RECORDS & COUNTY CLERK  
St. Paul, Minn.



DOCUMENT NUMBER 25496

CERTIFICATE NUMBER 18150  
BOOK 48 PAGE 29  
STATE OF MINNESOTA  
County of Ramsey  
OFFICE OF THE REGISTRAR OF TITLES  
I do hereby certify that the within instrument was filed in this office at St. Paul, on the 10th day of September A. D. 1916  
at St. Paul, Minn.  
By *Wm. W. Farwell*  
Registrar of Titles  
Deputy

This plat document is an UNOFFICIAL copy of a Subdivision Plat or Registered Land Survey and is made available for information purposes only.  
To obtain an official copy please contact the Ramsey County Recorder's Office.

96452