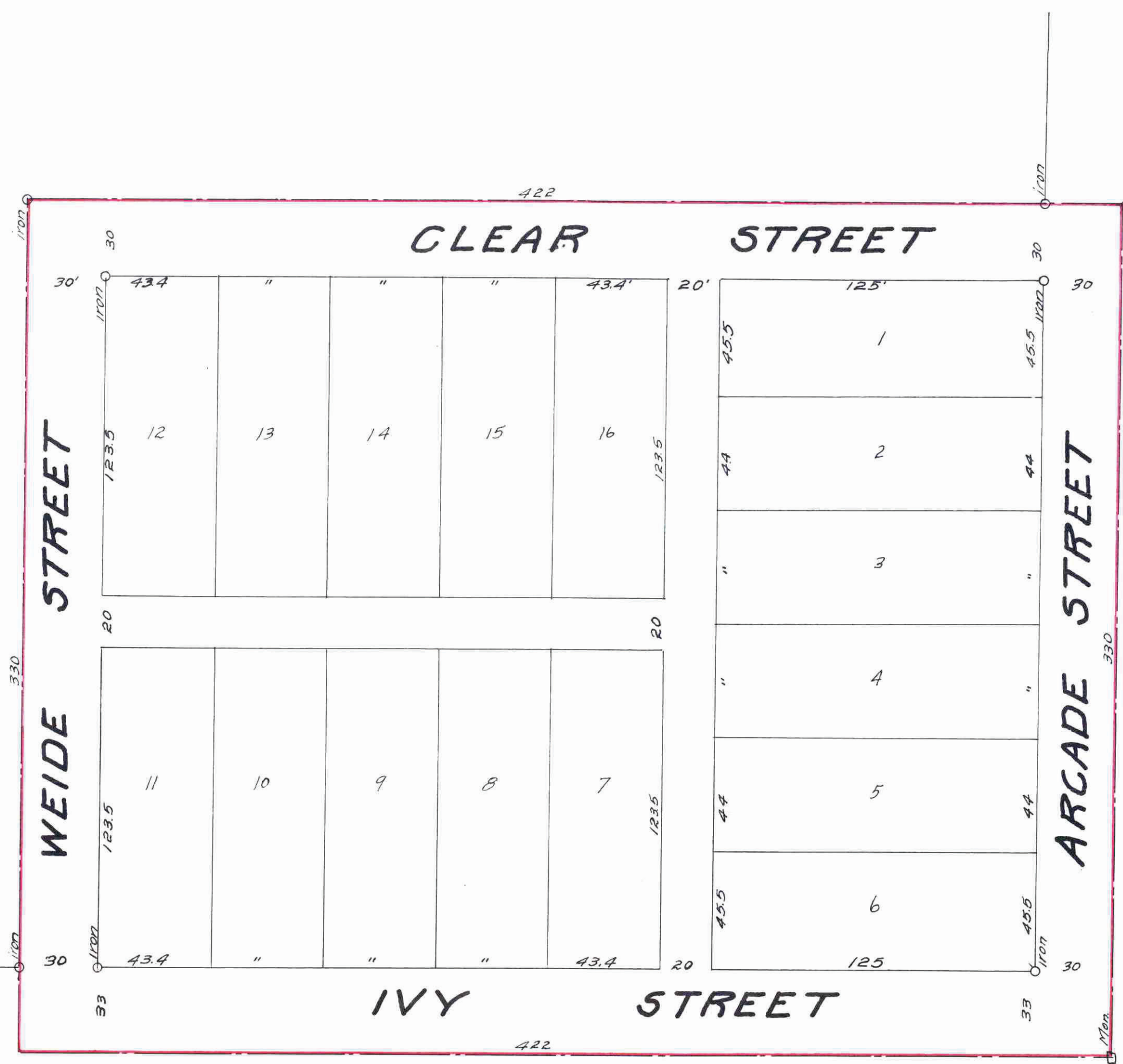


A. EVANSON ADDITION

SCALE - 40' to 1"
O. PALMER - SURVEYOR



I hereby certify to having Surveyed and platted the property described on this map as A. EVANSON ADDITION and have placed iron monuments as indicated hereon and the same is correct

State of Minnesota }
County of Ramsey }

O. Palmer
Surveyor

On this 1st day of August, A.D. 1916 before me personally appeared O. Palmer to me known to be the person who executed the foregoing certificate, and acknowledged that he executed the same as his free act and deed.

John C. Hueller
Notary Public, Ramsey County, Minn.
My commission expires May 17, 1917.

This is to certify that Anton Evanson and Thea Evanson, his wife, owners of the following described property in the NE 1/4 of the SE 1/4 Sec 20 T 29 R 22 viz. beginning at the intersection of the East and West centerline of said SE 1/4 of Sec 20 and the East line of said Section, thence North on East line of said Sec 20 a distance of 330 ft thence West and parallel to said East and West center line a distance of 422 ft, thence South on a line parallel to said East line of Sec 20 a distance of 330 ft, thence East along said East and West center line a distance of 422 ft, point of beginning, have caused the same to be surveyed and platted and hereafter known as A. Evanson Addition, as shown by this plat and hereby dedicate to the public for the public use forever all the streets and alleys as herein indicated. Witness our hands and seal this 1st day of August A.D. 1916

In the presence of
John C. Hueller
B. B. Hueller.

Anton Evanson
Thea Evanson

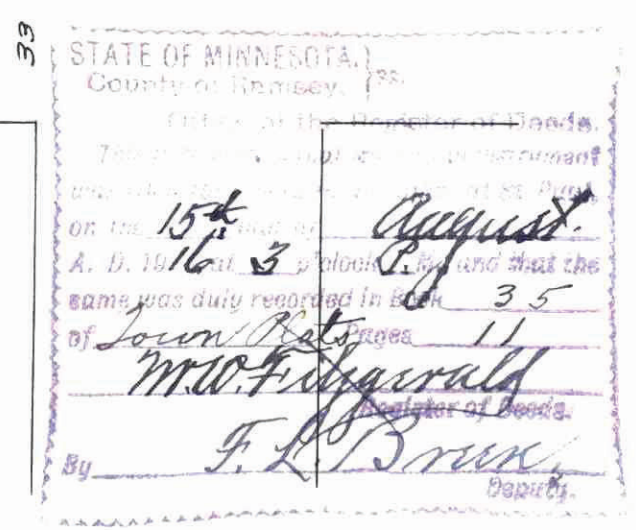
State of Minnesota }
County of Ramsey }

On this 1st day of August, A.D. 1916 before me personally appeared Anton Evanson and Thea Evanson, his wife to me known to be the persons who executed the foregoing certificate and acknowledged that they executed the same as their free act and deed

John C. Hueller
Notary Public, Ramsey Co., Minn.
My commission expires May 17, 1917.

500143

Accepted by the Council Aug 8th A.D. 1916
Approved Aug 9th A.D. 1916
John Shirley
City Clerk



Accepted and approved this 8th day of August A.D. 1916

Geo. F. Hersee
Charles H. Brown
James Jordan
Wm. J. ...
Plat Commissioners
Commissioner of Public Works

This plat document is an UNOFFICIAL copy of a Subdivision Plat or Registered Land Survey and is made available for information purposes only.
To obtain an official copy please contact the Ramsey County Recorder's Office.

Taxes for the year of 1915 on the lands described within PAID
AUG 1 1916
MRS. A. O'Malley, Treasurer
RAMSEY COUNTY, MINN.

TAXES PAID AND TRANSFER ENTERED
AUG 15 1916
GEO. J. RIES, COUNTY AUDITOR
By *Held* Deputy

DEPARTMENT OF FINANCE
ST. PAUL, MINN.
AUG 1 1916
By *Schmeidler*