

# RITCHIE'S ADDITION.

JOHN B. IRVINE, SURVEYOR.

SEPT 1915.

Scale 20ft. per. inch.

493177, 80 cts

This plat document is an UNOFFICIAL copy of a Subdivision Plat or Registered Land Survey and is made available for information purposes only.

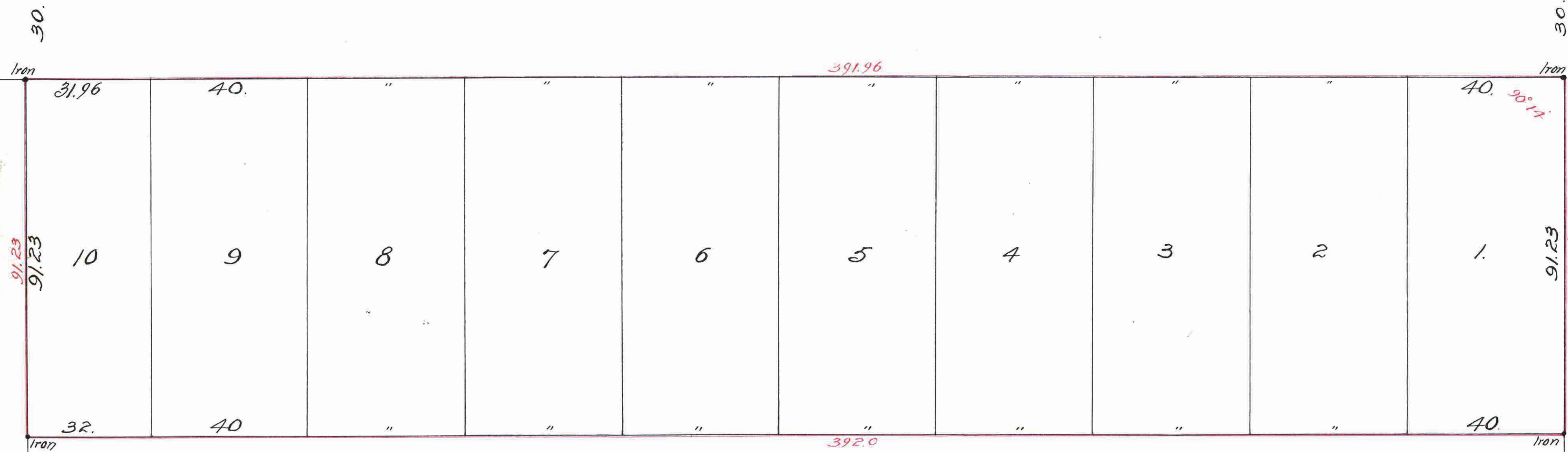
To obtain an official copy please contact the Ramsey County Recorder's Office.



MARYLAND

ST.

Mont.



493177

Taxes for the year of 1915 on the lands described within TAD  
 1916  
 Ramsey County, Minn.

DEPARTMENT OF FINANCE  
 APR 11 1916  
 Schneider

TAXES PAID AND TRANSFER ENTERED  
 APR 11 1916  
 GEO. J. RIES, COUNTY AUDITOR  
 Ringwald

STATE OF MINNESOTA  
 County of Ramsey  
 APR 11 1916  
 Register of Deeds  
 Ringwald

I hereby certify to having surveyed and blatted the property as described on this map as Ritchie's Addition and have placed iron monuments at each corner as shown on this map and the same is correct.

John B. Irvine  
 Surveyor.

State of Minnesota } On this 2nd day of March, A. D. 1916, personally,  
 County of Ramsey } came before me the undersigned John B. Irvine  
 to me well known and acknowledged that he executed the foregoing  
 certificate as his own free act and deed.  
 J. Hermann  
 Notary Public  
 Ramsey County, Minnesota.

My Commission Expires Sept 11, 1920

This is to certify that John E. Ritchie and Ida M. Ritchie his wife owners of Lot One Block One Dale Street Garden Lots have caused the same to be surveyed and blatted and hereafter known as Ritchie's Addition as shown by this plat and hereby dedicate to the public and for public use forever all the streets and alleys as herein indicated. Witness our hands and seals this 17th day of March A. D. 1916 In presence of:

J. Bielenberg } John E. Ritchie  
 E. Bielenberg } Ida M. Ritchie

State of Minnesota } On this 17th day of March, A. D. 1916  
 County of Ramsey } personally came before me the undersigned  
 John E. Ritchie and Ida M. Ritchie his wife to me well known  
 and they acknowledged that they executed the foregoing certificate  
 as their own free act and deed.  
 J. Hermann  
 Notary Public  
 Ramsey County, Minnesota.

My Commission Expires

NOTARY PUBLIC, Ramsey County, Minnesota.  
 My Commission expires September 20th, 1919.

Accepted and Approved this 3rd day of April A.D. 1916  
 Charles H. Johnson } Plat Commissioner  
 Commissioner of Public Works

Accepted by the Council April 4th 1916.  
 Approved April 4th 1916.  
 John J. Farney  
 City Clerk.