

SPEISER'S ADDITION

Jens Pedersen, Surveyor.

o indicates Iron
Scale 50 Feet per inch

I hereby certify to having surveyed and platted the property as described on this map as Speiser's Addition, and have placed iron monuments at the corners of each and every block, as shown on this map, and the same is correct.

Surveyor.

State of Minnesota } On this 18th day of August A.D. 1915, before me the undersigned, personally appeared, Jens Pedersen, to me well known, and acknowledged that he executed the foregoing certificate as his own free act and deed.

A. R. Moore
Notary Public, Ramsey Co., Minn
My Commission expires, Oct 29, 1917

This is to certify that Henry Speiser, and Lizzie Speiser, his wife, proprietors of the North 386.76 ft. of the West 1/2 of the West 1/4 of the South east 1/4 of Sec. 20, T.29, R.22, have caused the same to be surveyed and platted, and hereafter known as Speiser's Addition, as shown by this plat and hereby dedicate to the public and for the public use forever, all the streets, Avenues and alleys as herein indicated.

Witness our hands and seals this 17th day of August 1915
In presence of
W. Moore
C. A. Johnson
Henry Speiser
Lizzie Speiser

State of Minnesota } On this 17th day of August A.D. 1915, County of Ramsey } personally came before me the undersigned, Henry Speiser and Lizzie Speiser, his wife, to me well known, and they acknowledged that they executed the foregoing certificate, as their own free act and deed.

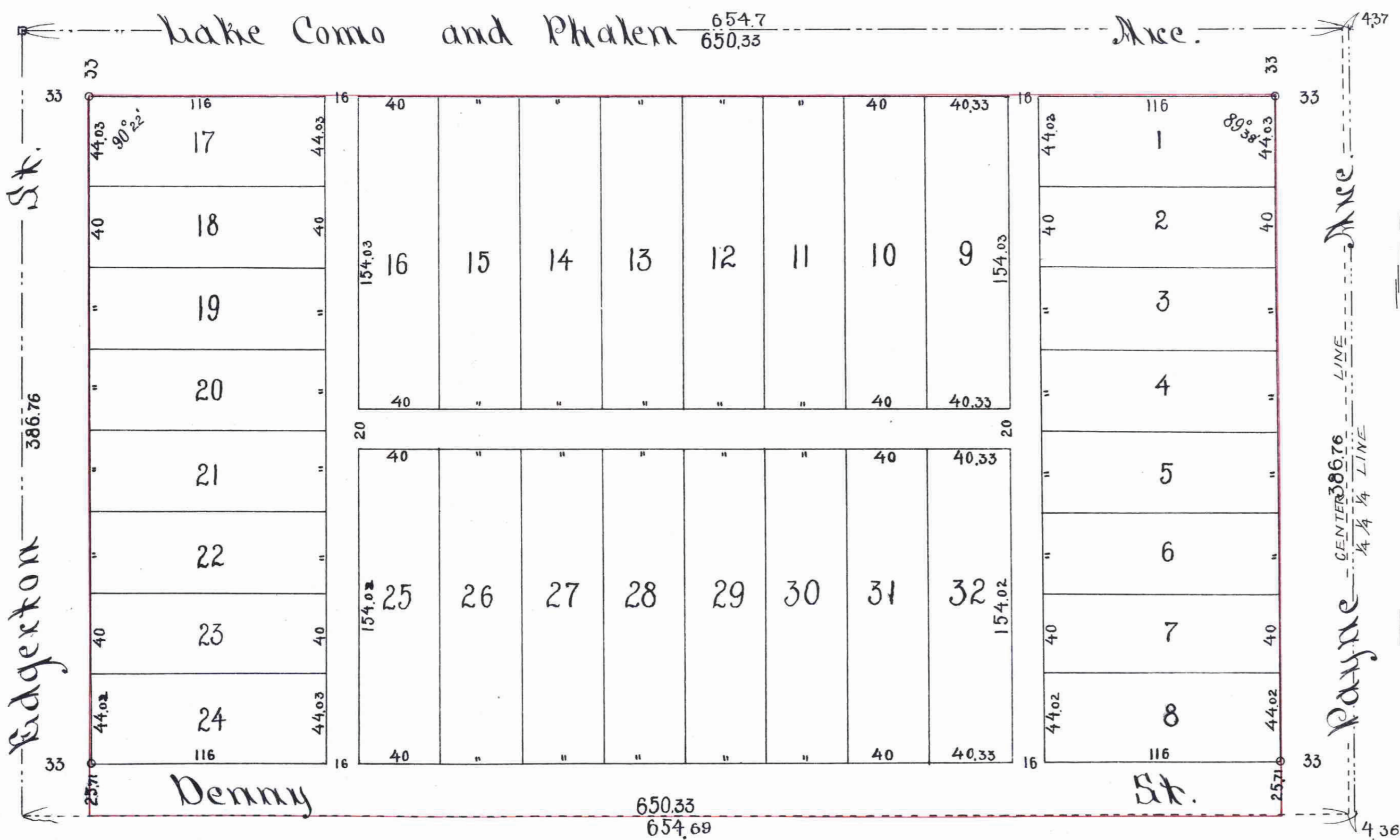
A. R. Moore
Notary Public, Ramsey Co., Minn
My Commission expires, Oct 29, 1917

Accepted and approved this 30th day of August A.D. 1915.

Charles H. Peterson
Charles A. Johnson
James Jordan
W. J. Fisher } Plat Commissioners
Commissioner of Public Works.

Accepted by the Council - Aug 30th 1915.

Approved - Aug 30th 1915
John J. Harney
City Clerk.



Office of the Registrar of Deeds
County of Ramsey, Minn.
This is to certify that the within instrument was filed for record in the office of St. Paul, on the 17th day of August, A. D. 1915, at 9:00 a.m. and that the same was duly reported in Book 34 of Deeds, page 11.
M. J. Gray
Registrar of Deeds.

TAXES PAID
AND TRANSFER ENTERED
SEP 13 1915
GEO. J. RIES, COUNTY AUDITOR
By [Signature] Deputy

DEPARTMENT OF FINANCE
ST. PAUL, MINN.
SEP 13 1915
ASSESSMENT PAID
J. H. SCHNEIDER, Commissioner

This plat document is an UNOFFICIAL copy of a Subdivision Plat or Registered Land Survey and is made available for information purposes only.
To obtain an official copy please contact the Ramsey County Recorder's Office.

482533