

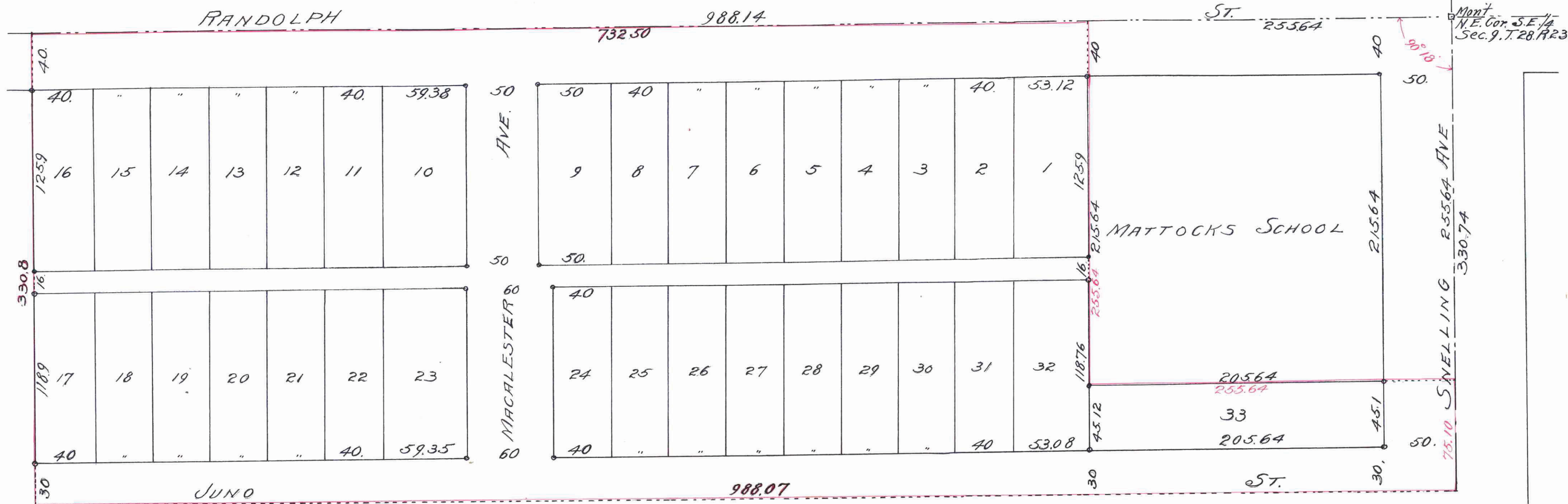
BENEDICTINE PLAT I.

JOHN B. IRVINE. SURVEYOR.

INDICATES IRONS

MAY 11, 1915.

Scale 50 ft per inch.



I hereby certify to having surveyed and platted the property as described on this map as Benedictine Plat I, and have placed iron monuments at the corners of each block as shown on this map and the same is correct.
 John B. Irvine
 Surveyor.

State of Minnesota } On this 17th day of May A.D. 1915 personally appeared before the undersigned John B. Irvine to me well known and acknowledged that he executed the foregoing certificate as his own free act and deed.
 John B. Irvine
 Notary Public.
 My Commission expires July 11th, 1921.

Accepted and Approved this 9th day of June A.D. 1915.
 Charles E. Brown
 Charles W. Johnson
 James Jordan
 Plat Commission.
 Commissioner of Public Works

Accepted by the Council JUNE 10th A.D. 1915

Approved JUNE 10th A.D. 1915
 John J. Faricy
 City Clerk.

This is to certify that Benedictine Sisters Benevolent Association a corporation duly created organized and existing under and by virtue of the laws of the State of Minnesota, owners of the North 1/4 of the east 1/4 of Northeast 1/4 of the Southeast 1/4 of Section 9, Township 28, Range 23, except the north 255.64 feet of the east 255.64 feet thereof, have caused the same to be surveyed and platted and hereafter known as Benedictine Plat I, as shown by this plat and hereby dedicate to the public and for public use forever all the streets, avenues and alleys as herein indicated.

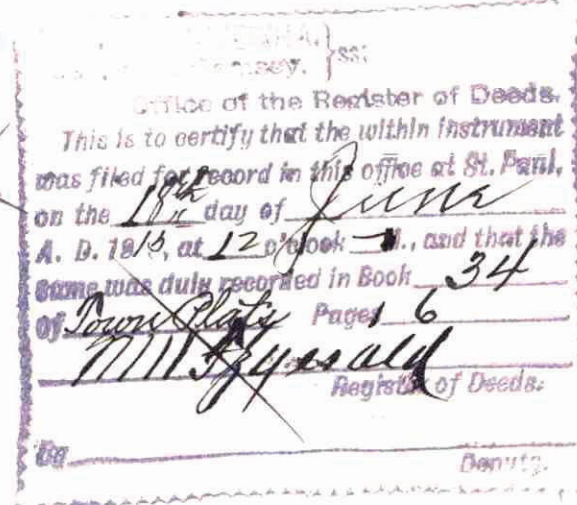
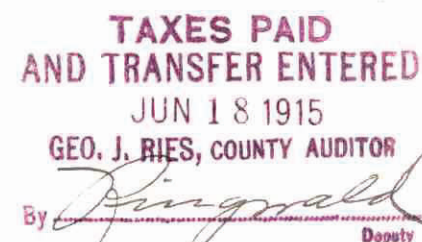
Witness our hands and corporate seal of the above named corporation this 20th day of May A.D. 1915.
 In presence of
 Charles N. Nienin
 Maurice Lullioan

Benedictine Sisters Benevolent Association,
 By M. Alexia Kerst President
 Eustacia Beyenka Secretary.

State of Minnesota } On this 20th day of May A.D. 1915 personally appeared before me the County of St. Louis } under signed M. Alexia Kerst and Eustacia Beyenka to me well known who being duly sworn did say that they are the president and secretary respectively of the Benedictine Sisters Benevolent Association, that the seal affixed to the above instrument is the corporate seal of said corporation, and that the same was signed and sealed on behalf of said corporation by authority of its board of directors, and the said M. Alexia Kerst and Eustacia Beyenka acknowledged said instrument to be the free act and deed of said corporation.

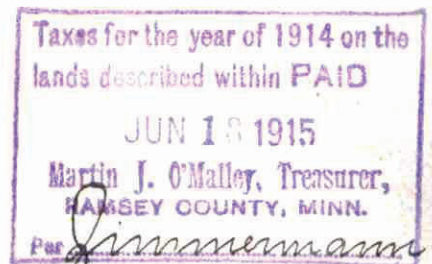
Bonaventure Kinney
 Notary Public.
 St. Louis County, Minnesota.

My Commission Expires July 11th, 1921



This plat document is an UNOFFICIAL copy of a Subdivision Plat or Registered Land Survey and is made available for information purposes only.

To obtain an official copy please contact the Ramsey County Recorder's Office.



478234