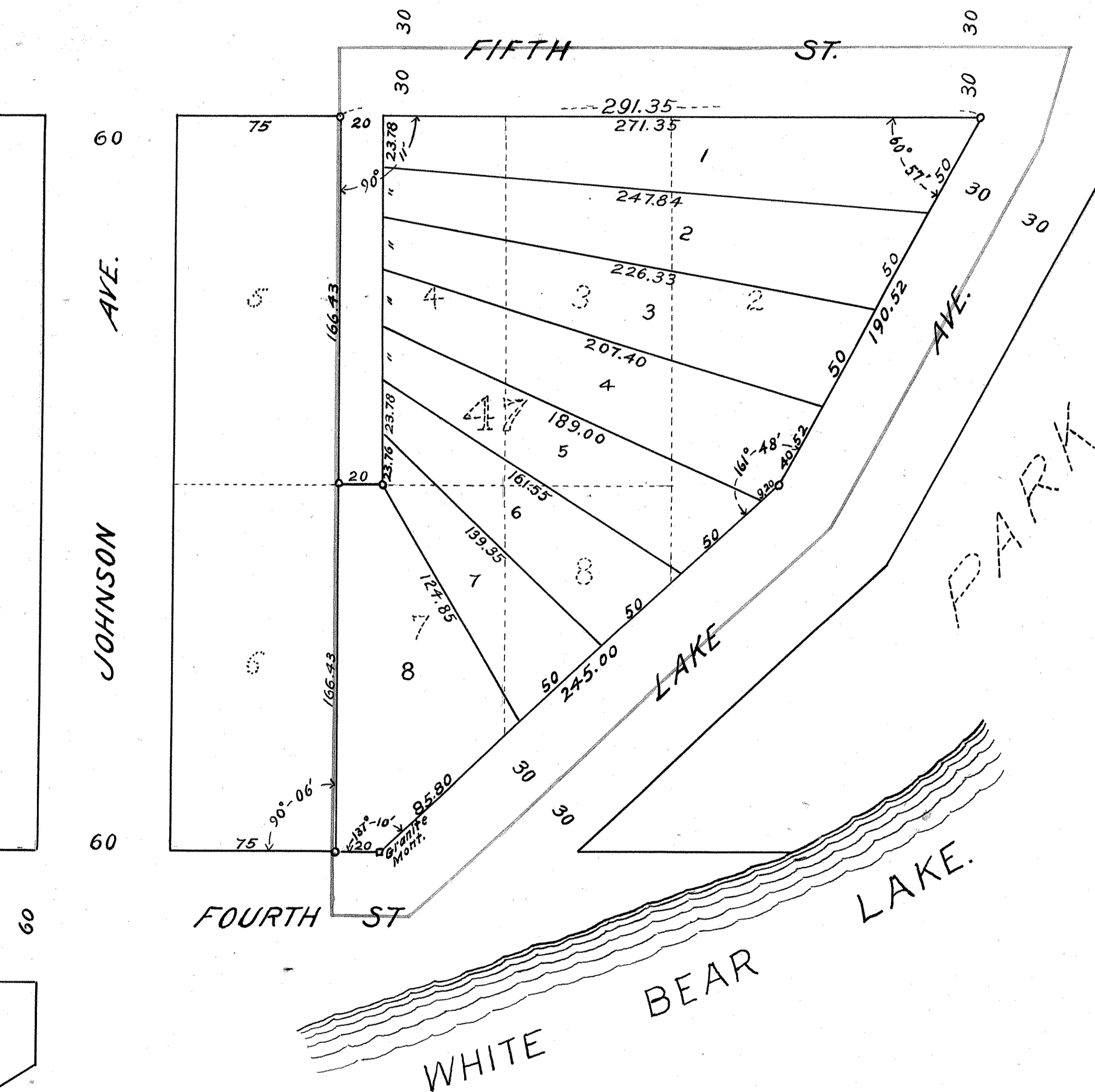


FITZPATRICK'S ADDITION TO WHITE BEAR

Scale; 1" = 40'

o Indicates iron

Surveyed by
T. Milton Fowble.



St. Paul Minn. May 18, 1914. I hereby certify to having surveyed and platted the property as described on this map as "FITZPATRICK'S ADDITION TO WHITE BEAR" and have placed iron monuments as shown on this plat and the same is correct.

T. Milton Fowble
Surveyor.

State of Minnesota, }
County of Ramsey. } ss. On this 18th day of May
A.D. 1914 before me personally appeared
T. Milton Fowble, to me known to be the person
described in and who executed the foregoing
instrument and acknowledged that he executed
the same as his free act and deed.

J. Mills Tracy
Notary Public, Ramsey Co. Minn.
My Commission expires January 21, 1920

This is to certify that John F. Fitzpatrick, proprietor of Block 47, except Lots 5 and 6, of White Bear, Ramsey County Minn, has caused the same to be surveyed and platted and hereafter known as "FITZPATRICK'S ADDITION TO WHITE BEAR" as shown by this plat and hereby dedicates to the public for public use forever all the Streets, Avenues and Alleys as hereon indicated.

Witness my hand and seal this 19th day of May A.D. 1914.

In presence of
H. M. Elby
J. M. Norton

John F. Fitzpatrick

State of Minnesota }
County of Ramsey } ss. On this 19th day of May A.D. 1914, before me personally
appeared John F. Fitzpatrick, to me known to be the person described in and who
executed the foregoing instrument and acknowledged that he executed the same
as his free act and deed.

J. M. Norton
Notary Public, Ramsey Co. Minn.
My Commission expires August 24th, 1912

Accepted and approved this
22^d day of May A.D. 1914

George H. Bernice }
Charles H. Bronson } Plat Commissioners.
Jas W. Jordan }
O. Clausen } City Engineer.

Approved by the Village Council of White Bear June 2nd A.D. 1914.

J. E. Ostlund Clerk.
Clerk.