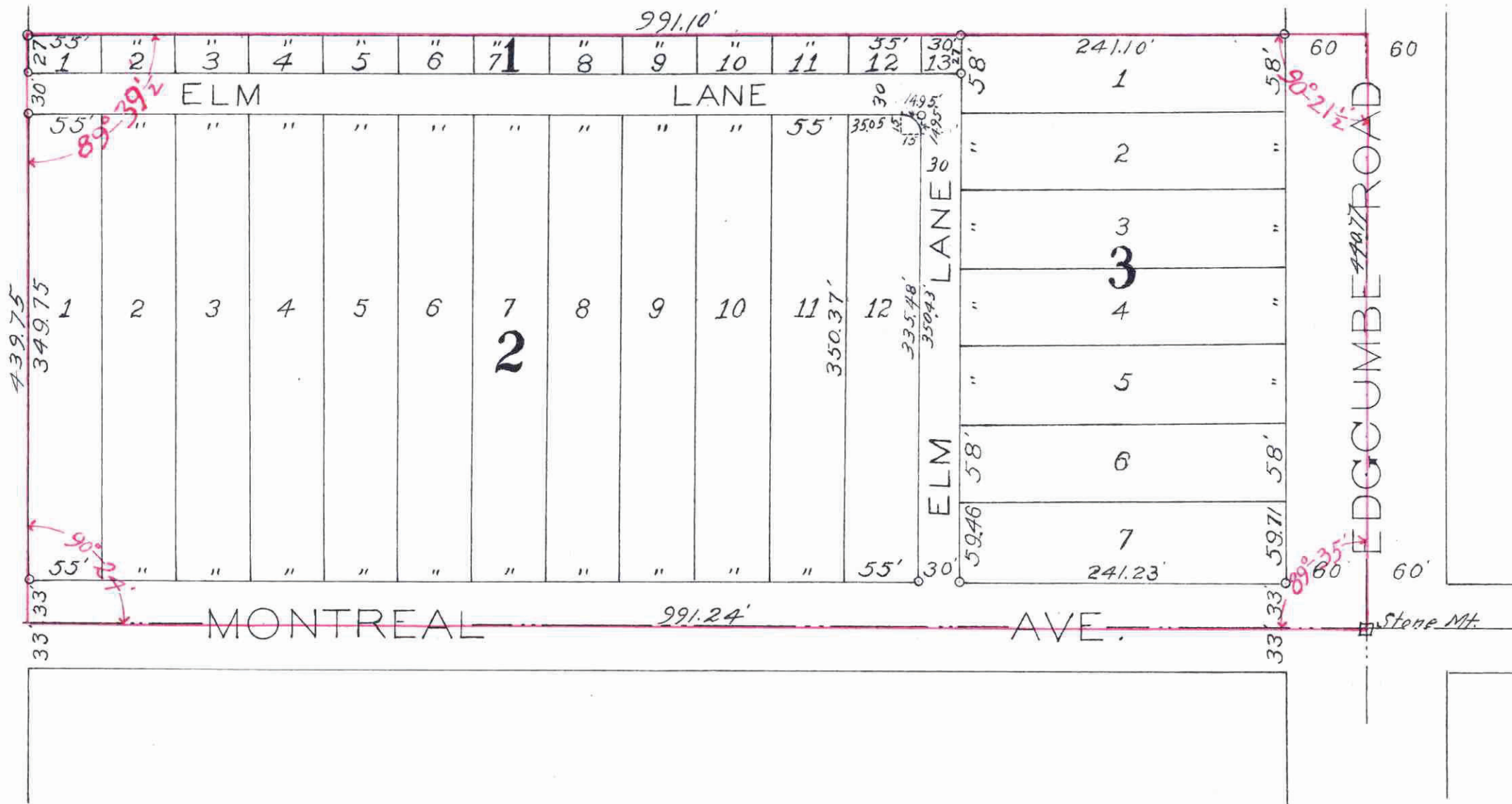


# EDGCUMBE FARMS

Scale; 1"=100'

o-Indicates Iron.

Surveyed by  
T. Milton Fowble.



I hereby certify to having surveyed and platted the property as described on this map as EDGCUMBE FARMS and have placed iron monuments as shown on this map and the same is correct.

*T. Milton Fowble*  
Surveyor.

State of Minnesota } ss  
County of Ramsey } On this 22<sup>nd</sup> day of  
April A.D. 1914, before me personally ap-  
peared T. Milton Fowble to me known to  
be the person described in and who  
executed the foregoing instrument and  
acknowledged that he executed the  
same as his free act and deed.

*Minnie C. Larson*  
Notary Public Ramsey Co. Minn.  
My Commission Expires Mar. 8, 1918.

This is to certify that Paul G. Maurer, bachelor, owner of the south ten (10) acres of the east thirty (30) acres of the south one-half (1/2) of the north west quarter (1/4) of Section fifteen (15) T. 28 N., R. 23 W. has caused the same to be surveyed and platted and hereafter known as EDGCUMBE FARMS as shown by this plat and hereby dedicates to the public for public use forever all the roads, avenues and lanes as hereon indicated.

Witness my hand and seal this 23<sup>rd</sup> day of April A.D. 1914.

In presence of  
*Harold R. Skigas*  
*Minnie C. Larson*

*Paul G. Maurer*

State of Minnesota } ss  
County of Ramsey } On this 23<sup>rd</sup> day of April A.D. 1914, before me personally  
appeared Paul G. Maurer to me known to be the person described in and who  
executed the foregoing instrument and acknowledged that he executed  
the same as his free act and deed.

*Minnie C. Larson*  
Notary Public Ramsey Co. Minn.  
My Commission Expires Mar. 8, 1918.

Accepted and approved this 28<sup>th</sup> day  
of April A.D. 1914.

*George C. Bronson*  
*Charles W. Bronson*  
*Jas. W. Jordan*  
*O. Clausen*  
Plat Commissioners  
City Engineer.

Accepted by the Assembly MAY 7<sup>th</sup> A.D. 1914  
Accepted by the Board of Aldermen MAY 6<sup>th</sup> A.D. 1914  
And approved MAY 13<sup>th</sup> A.D. 1914

*R. Hoffmann*  
City Clerk  
of the City of St. Paul.

This plat document is an UNOFFICIAL copy of a Subdivision Plat or Registered Land Survey and is made available for information purposes only.  
To obtain an official copy please contact the Ramsey County Recorder's Office.



STATE OF MINNESOTA } ss  
County of Ramsey }  
Office of the Registrar of Deeds.  
This is to certify that the within instrument was filed for record in this office at St. Paul, on the 20<sup>th</sup> day of May, A. D. 1914, at 10<sup>o</sup>'clock A.M. and that the same was duly recorded in Book 32 of Town Range Pages 16 of 111<sup>th</sup> Street  
*M. J. G. [Signature]*  
Registrar of Deeds  
County.

TAXES PAID  
AND TRANSFER ENTERED  
MAY 20 1914  
GEO. J. RIES, COUNTY AUDITOR  
*[Signature]*  
Deputy

CITY TREASURER'S OFFICE,  
ST. PAUL, MINN.  
MAY 20 1914  
Assessment PAID  
\$ 1330.00, City Treas.  
*[Signature]*

Taxes for the year 1913 on the lands described within PAID  
MAY 19 1914  
FRANK J. OST, Treasurer,  
RAMSEY COUNTY, MINN.  
*[Signature]*

458589