

# ROSE HILL ADDITION

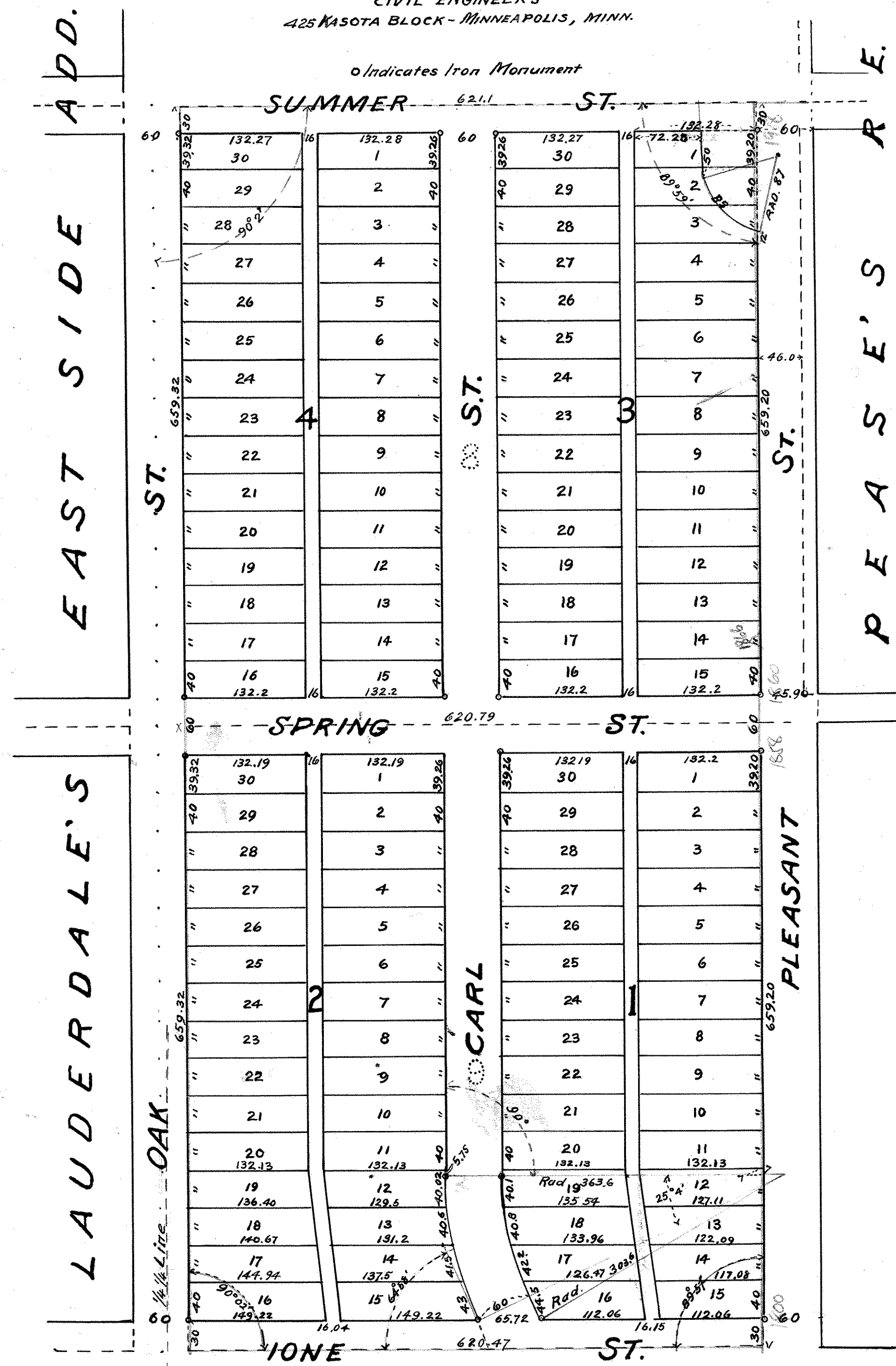
## RAMSEY COUNTY MINNESOTA.

SCALE 1 INCH TO 100 FEET.

**ABBOTT & BUDD**  
CIVIL ENGINEERS

425 KASOTA BLOCK - MINNEAPOLIS, MINN.

o Indicates Iron Monument



Know all men by these presents, that Martha J. Cummings, widow owner of Lot 9, Prospect Hill, Ramsey County, Minnesota, and The Minnesota Loan and Trust Company (a corporation organized and existing under the laws of the State of Minnesota) owner of Pease's Re-arrangement of Lots 3, 4, 7 and 8, Block 8, Prospect Hill, in said county, have caused the same to be laid out, plotted and subdivided as shown on the plat on this sheet, and same to be hereafter known as ROSE HILL ADDITION, and hereby dedicate and donate to the use of the public forever all streets, avenues and alleys as on said plat shown.

In testimony whereof we have hereunto set our hands and the corporate seal of said corporation this 6<sup>th</sup> day of Dec. A.D. 1913.

In presence of  
 Wm. M. Doyle  
*W. M. Doyle*

*Martha J. Cummings*  
 THE MINNESOTA LOAN AND TRUST COMPANY  
 William A. Durst Vice President.  
 Henry D. Thrall Secretary

State of Minnesota } ss  
 County of Hennepin }

On this 6<sup>th</sup> day of Dec. A. D. 1913 before me personally appeared Martha J. Cummings, widow, to me known to be the person who executed the foregoing instrument, and acknowledged that she executed the same as her free act and deed

*W. M. Doyle*  
 Notary Public, Hennepin County, Minn.  
 My Commission expires  
 May 31<sup>st</sup> 1920

State of Minnesota } ss  
 County of Hennepin }

On this 6<sup>th</sup> day of December A.D. 1913, before me appeared William A. Durst, to me personally known, who, being by me duly sworn, did say that he is the Vice President of The Minnesota Loan and Trust Company, and Henry D. Thrall, who, being by me duly sworn did say that he is the Secretary of the above named Corporation, that the seal affixed to the foregoing instrument is the corporate seal of said corporation, and that said instrument was executed in behalf of said corporation by authority of its Board of Directors, and as its free act and deed.

*W. M. Doyle*  
 Notary Public, Hennepin County Minn,  
 My commission expires  
 May 31 1920

I hereby certify that I have surveyed the land described in the foregoing instrument of dedication and divided the same into lots and blocks as on the map hereon shown, which is a correct representation of said survey and division, that all distances are correctly shown on the plat by figures denoting feet and decimals of a foot, and that the topography of the land is correctly shown on the plat, that there are no wet lands or public highways to be designated other than on said plat shown, and that the iron monument for the guidance of future surveys have been correctly placed in the ground as on said plat designated.

G. H. Budd, Surveyor.

Subscribed and sworn to before me this 6<sup>th</sup> day of Dec. A.D. 1913.

*W. M. Doyle*  
 Notary Public, Hennepin County, Minn.  
 My Commission expires May 31, 1920.

Accepted and approved this 31 day of Jan. A.D. 1913  
 George E. Howard }  
 Charles Mc Bronson } Plat Commissioners  
 James Jordan }  
 O. Clausen City Engineer

Accepted and approved by the Board of County Commissioners of the County of Ramsey, State of Minnesota

*Geo. J. Ries*  
 County Auditor.

Manuel's Pl. Oct. 25 1912.  
 Add. April 27 1913.