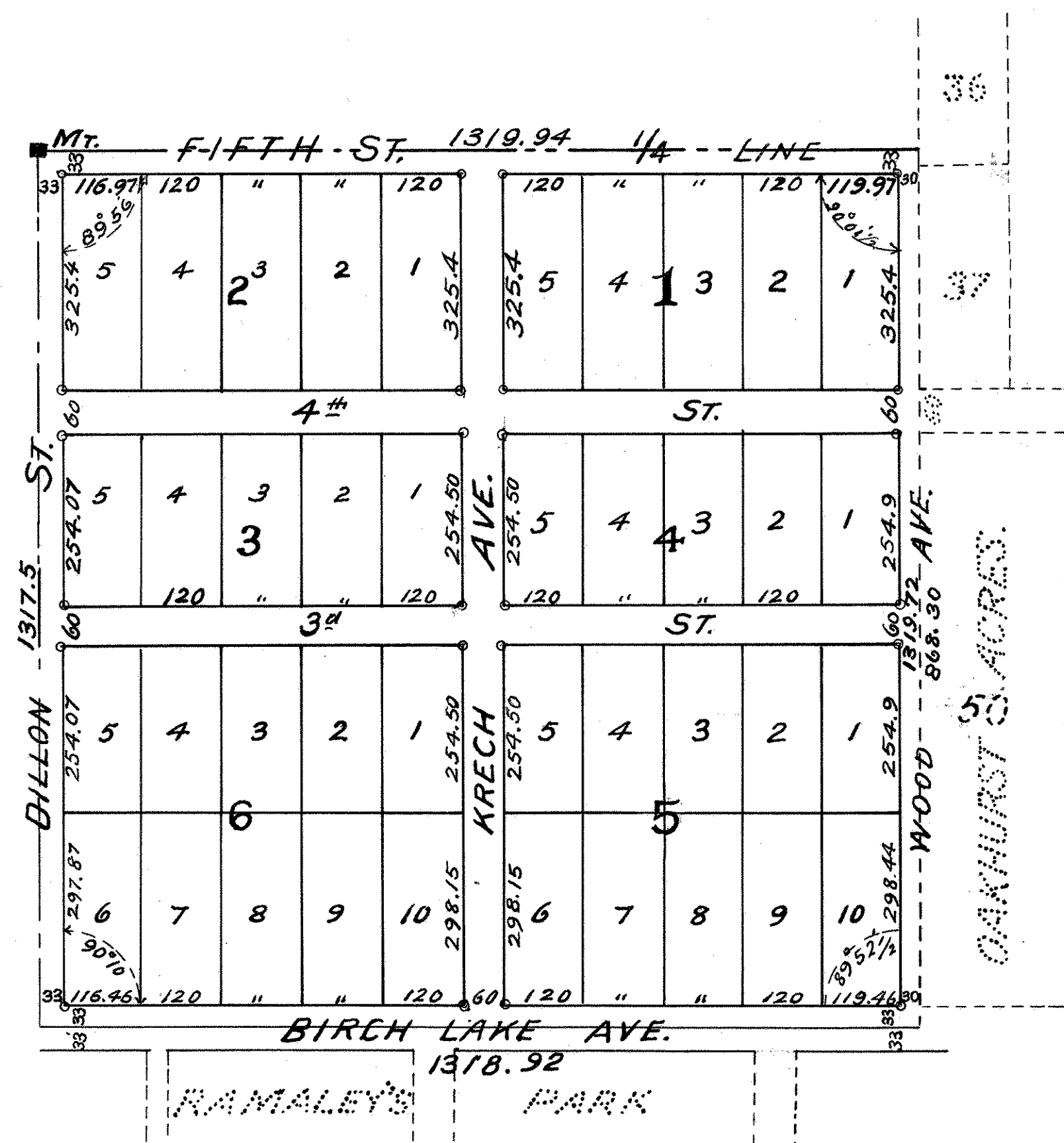


W.F. KRECH'S ADD. TO WHITE BEAR RAMSEY COUNTY, MINN.



I hereby Certify to having Surveyed and platted the property described on this map as W.F. Krech's Addition to WHITE BEAR and have placed iron monuments at the corners of each and every BLOCK as shown on this map, and the same is correct.

Frank J. Tavernier
Surveyor

STATE OF MINNESOTA }
County of Ramsey } On this 30th day of December, A.D. 1913 personally
appeared before me the undersigned Frank J. Tavernier, to me well known and acknowledged that he executed the foregoing Certificate as his own free act and deed.

J.A. Alexander,
Notary Public,
Ramsey County, Minn.

My commission
expires April 4, 1918

This is to Certify that William F. Krech and Emma E. Krech, his wife, proprietors of the following described property NORTH HALF (N. 1/2) of WEST HALF (W. 1/2) of SOUTH WEST QUARTER (SW. 1/4) of SECTION 14 (14) TOWNSHIP 30, RANGE 22 WEST 4th P.M. have caused the same to be SURVEYED and PLATTED and hereafter know as W.F. KRECH'S ADDITION TO WHITE BEAR as shown by this PLAT and hereby dedicate to the public and for the public use forever, all the streets and avenues as herein indicated.

Witness our hands and Seals this 6th day of January 1914

In presence of
Walter Glossing
J. F. Conway

William F. Krech
Emma E. Krech

Accepted and Approved this 6th day of January A.D. 1914.

George H. Herold
Charles H. Bronson } Plat Commissioners
Jas W. Jordan

D. Clausen City Engineer.

Accepted and Approved under Chapter 438 General laws of 1907
by the Board of Trustees of the Village of WHITE BEAR
this 6th day of January 1914.

J. N. Munnery President
J. E. Estrand Village Clerk