

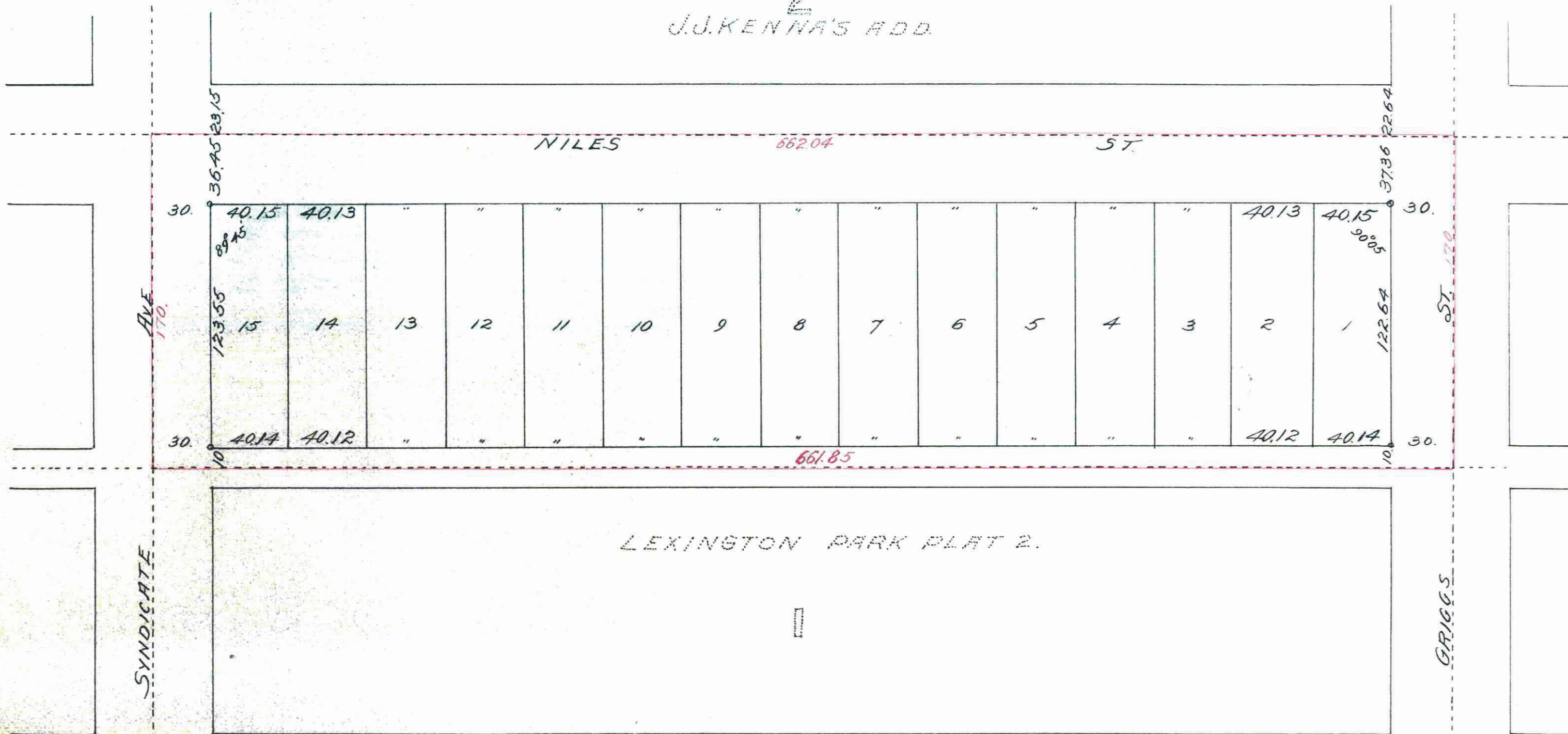
AHLF AND JENTS ADDITION.

JOHN B. IRVINE, SURVEYOR.

AUGUST 1913.

SCALE 50 ft. per inch.

IRONS AT LOT CORNERS
2
J.J. KENNA'S ADD.



WATSON

AVE.

LEXINGTON PARK PLAT 2.

I hereby certify to having surveyed and platted the property as described on this map as AHLF and JENTS ADDITION and have placed iron monuments at the corners of each lot and the same is correct.
John B. Irvine,
Surveyor.

State of Minnesota } On this 12th day of August A.D. 1913
County of Ramsey } personally appeared before me the undersigned
John B. Irvine to me well known and acknowledged that he executed
the foregoing certificate as his own free act and deed.

Notary Public.

My Commission Expires Oct 29, 1919 Ramsey County, Minnesota.

This is to certify that John H. Ahlf and Emma H. Ahlf his wife owners of the following described property to wit: Commencing at the center of Section Ten, Township Twenty-eight, Range Twenty-three, thence south along the north and south center line of said section 823.87 feet, thence east 663.46 feet to place of beginning, being a point lying in the center line of Syndicate avenue prolonged, thence north 170 feet, thence east along the south line of Niles street in J.J. Kenna's Addition to a point where the same is intersected by the 1/4 section line, being the center of Griegs street, prolonged south, thence south along said 1/4 section line or center of Griegs street prolonged south 170 feet thence west to point of beginning, have caused the same to be surveyed and platted and hereafter known as AHLF and JENTS ADDITION as shown by this plat and here by dedicate to the public for public use forever all the streets, avenues or alley as herein indicated.

Witness our hands and seals this 4th day of October A.D. 1913

In presence of
R. J. Knapp } John H. Ahlf
Emma H. Ahlf

State of Minnesota } On this 4th day of October A.D. 1913
County of Ramsey } personally came before me the undersigned
John H. Ahlf and Emma H. Ahlf his wife to me well known and they
acknowledged that they executed the foregoing certificate as their
own free act and deed.

Marc Barkerfield
Notary Public.

My Commission Expires March 27, 1920 Ramsey County, Minnesota.

Accepted and Approved this 4th day of November A.D. 1913

George C. Howell } Plat Commission
Charles H. Brown }
James Jordan } City Engineer
D. Clausen }

Accepted by the Board of Aldermen Nov 4th A.D. 1913
Accepted by the Assembly Nov 6th A.D. 1913
Approved Nov 7th A.D. 1913

Hoffman City Clerk.

This plat document is an UNOFFICIAL copy of a Subdivision Plat or Registered Land Survey and is made available for information purposes only.
To obtain an official copy please contact the Ramsey County Recorder's Office.

STATE OF MINNESOTA, ss.
County of Ramsey.
I, _____, Clerk of the Register of Deeds
do hereby certify that the within instrument was filed for record in this office at St. Paul, on the 11th day of November A. D. 1913, at 12 o'clock P. M., and that the same was duly recorded in Book 32 of _____ Regd. 1
By _____
Register of Deeds.

CITY TREASURER'S OFFICE,
ST. PAUL, MINN.
NOV 10 1913
Assessment PAID
S. A. PERMUTER, City Treas.
By _____

Taxes for the year 1912 on the lands described within PAID
NOV 10 1913
FRANK J. OBST, Treasurer
RAMSEY COUNTY, MINN.
By _____

449029