

LAUDERDALE'S E. SIDE ADD.

MANUEL'S SUBDIVISION

RAMSEY COUNTY, MINNESOTA

SCALE 1" TO 50'

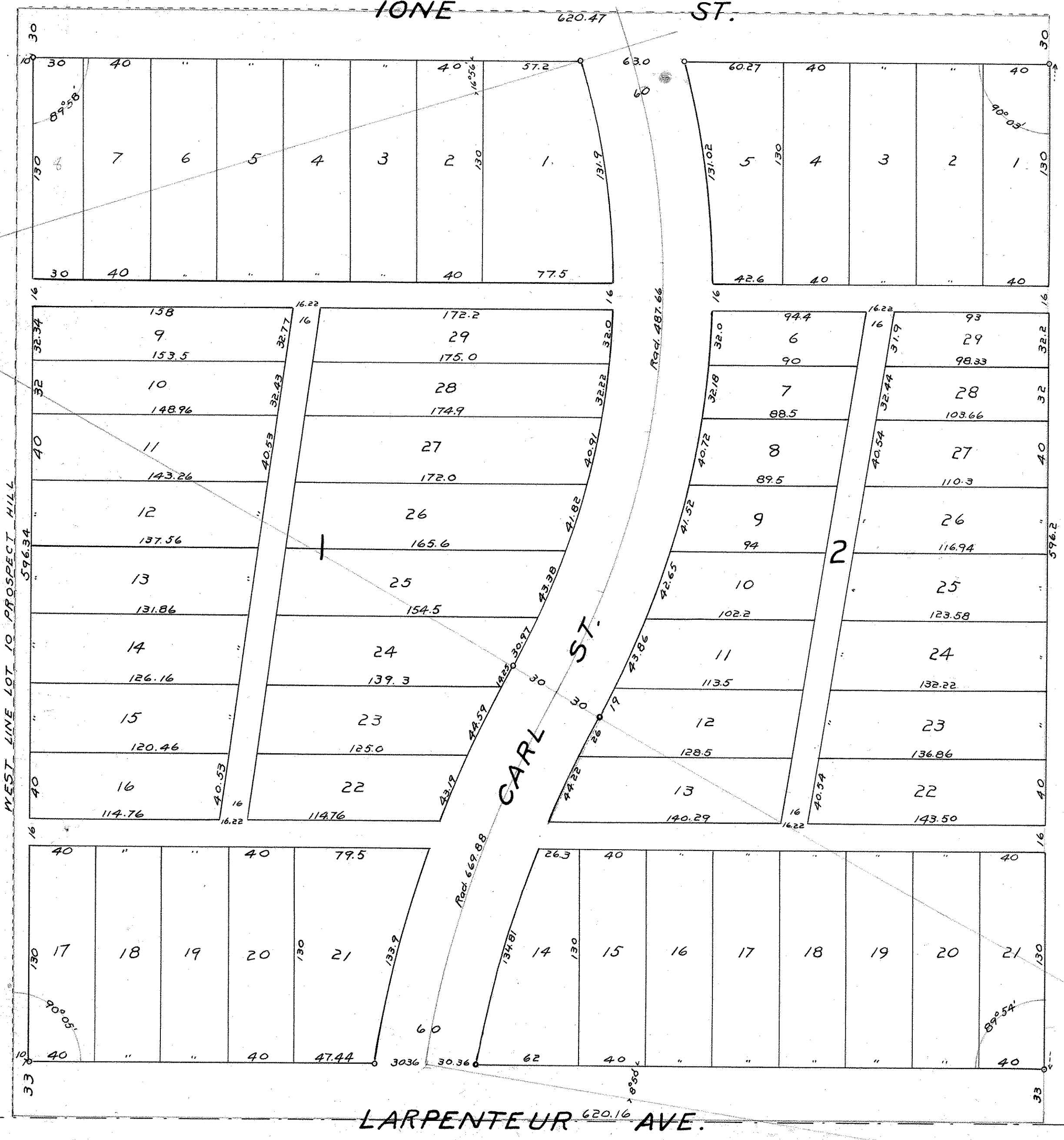
ABBOTT & BUDD

CIVIL ENGINEERS
425 KASOTA BLOCK MINNEAPOLIS, MINN.

o Indicates Iron Monument

10 FT. STRIP TO BE VACATED BY COUNTY COMMISSIONERS
ON RECOMMENDATION OF COUNTY SURVEYOR
EAST LINE LOT 11 PROSPECT HILL
EAST LINE MANUEL'S REARRANGEMENT OF LOT 11 PROSPECT HILL 26° 11'

OAK ST.



This is to certify that we, Martha J. Cummings, (a widow) mortgagee, and Ralph W. Manuel, trustee, joining, of Lot 10, Prospect Hill, Ramsey County, Minnesota, have caused the same to be surveyed and platted and hereafter to be known as Manuel's Subdivision, as shown on this plat, and we hereby dedicate and donate to the public, for public use forever, all the streets and alleys as hereon indicated.

In witness whereof we have hereunto set our hands and seals this 6th day of December A.D. 1913

In presence of
 Mella M. Doyle
 E.P. Abbott
 Martha J. Cummings
 Ralph W. Manuel
 Trustee

State of Minnesota }
 County of Hennepin }
 On this 6th day of Dec. A.D. 1913 personally appeared before me Martha J. Cummings and Ralph W. Manuel, to me known to be the persons described in and who executed the foregoing instrument, and acknowledged the same to be their free act and deed

E.P. Abbott
 Notary Public Hennepin County, Minn.
 My commission expires
 May 31 1920

State of Minnesota }
 County of Hennepin }
 I hereby certify that I have surveyed the land described in the foregoing instrument of dedication and divided the same into lots and blocks as on this plat shown, which is a correct representation of said survey and division, that all distances are correctly shown on the plat by figures denoting feet and decimals of a foot, and that the topography of the land is correctly shown on the plat; that there are no wet lands or public highways to be designated other than on said plat shown, and that the iron monuments for the guidance of future surveys have been correctly placed in the ground as on said plat designated.

G.H. Budd Surveyor.

Subscribed and sworn to before me this 6th day of Dec. A.D. 1913.
 E.P. Abbott
 Notary Public, Hennepin County, Minn.
 My commission expires
 May 31, 1920

Accepted and approved by the Board of County Commissioners of Ramsey County, Minnesota
 Geo. J. Pills
 County Auditor.

Accepted and approved this 31st day of Jan. A.D. 1913
 George E. Knowlton }
 Charles H. Johnson } Plat Commissioners
 Jas. W. Jordan }
 City Engineer.