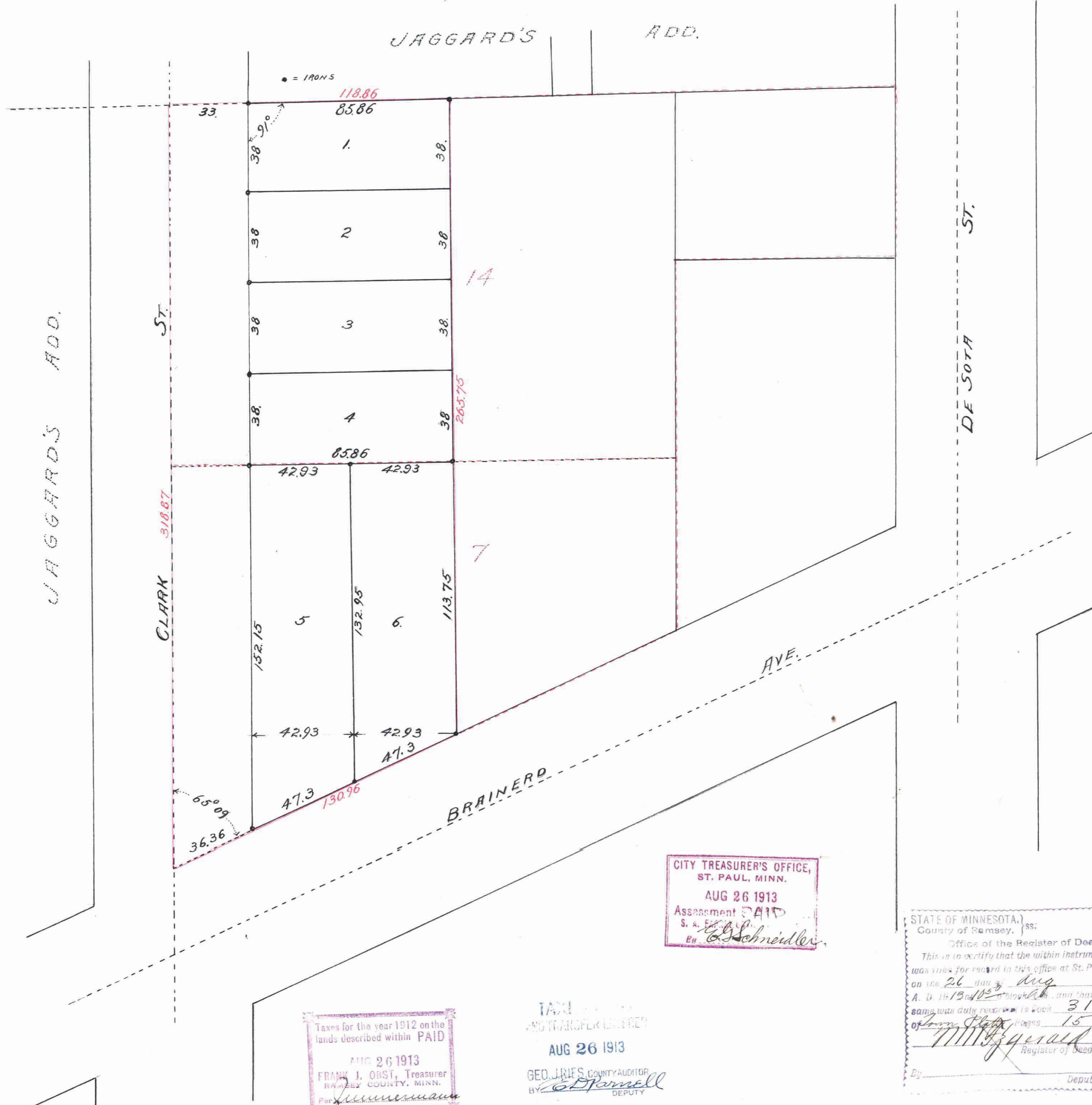


RUECKER'S ADDITION.

JOHN B. IRVINE, SURVEYOR.

JUNE 1913.

Scale 30 ft. per inch.



This plat document is an UNOFFICIAL copy of a Subdivision Plat or Registered Land Survey and is made available for information purposes only.

To obtain an official copy please contact the Ramsey County Recorder's Office.

I hereby certify to having surveyed and platted the property as described on this map as RUECKER'S ADDITION and have placed iron monuments at the corners of each and every lot as shown on this map and the same is correct.

John B. Irvine, Surveyor.

State of Minnesota } On this 4th day of August, A.D. 1913, personally County of Ramsey } appeared before me the undersigned John B. Irvine to me well known and acknowledged that he executed the foregoing certificate as his own free act and deed.

A. P. Moore
Notary Public.

My Commission Expires Oct 29, 1919 Ramsey County, Minnesota.

This is to certify that Maria Ruecker and Carl Aug. Ruecker her husband and Martha M. Ruecker and Paul Ruecker her husband owners of that part of lots seven (7) and fourteen (14) J. W. Bass' First Lots described as follows: Beginning at the south west corner of said lot 7 thence north on the west line of said lots 7 and 14 318.87 feet to the northwest corner of said lot 14, thence east on the north line of said lot 14-118.86 feet, thence south parallel with the west line of said lots 7 and 14-265.75 feet to the south line of said lot 7, thence southwesterly on the south line of said lot 7 130.96 feet to point of beginning, have caused the same to be surveyed and platted and hereafter known as RUECKER'S ADDITION as shown by this plat and hereby dedicate to the public and for the public use forever all the streets, avenues, alleys as herein indicated. Witness our hands and seals this 4th day of August, A.D. 1913.

In presence of
Sarah M. Irvine

Maria Ruecker
Carl Aug. Ruecker
Martha M. Ruecker
Paul Ruecker

State of Minnesota } On this 4th day of August, A.D. 1913 County of Ramsey } personally came before me the undersigned Maria Ruecker and Carl F. Ruecker her husband and Martha M. Ruecker and Paul Ruecker her husband to me well known and they acknowledged that they executed the foregoing certificate as their own free act and deed.

Pete Macdonald
Notary Public

My Commission Expires Oct 15th 1915 Ramsey County, Minnesota.

Accepted and Approved this 5th day of August, A.D. 1913.

George C. Benson
Charles A. Bronson
James Jordan
O. Clausen } Plat Commissioners

Accepted by the Board of Aldermen Aug 5th
Accepted by the Assembly Aug 7th
Approved Aug 14th

A.D. 1913
A.D. 1913
A.D. 1913

Al Hoffman City Clerk.

CITY TREASURER'S OFFICE,
ST. PAUL, MINN.
AUG 26 1913
Assessment PAID
S. A. Schneider

Taxes for the year 1912 on the lands described within PAID
AUG 26 1913
FRANK J. ORST, Treasurer
RAMSEY COUNTY, MINN.

TAXES PAID AND TRANSFER LICENSED
AUG 26 1913
GEO. JAMES COUNTY AUDITOR
G. J. Farnell DEPUTY

STATE OF MINNESOTA,
County of Ramsey, ss:
Office of the Register of Deeds.
This is to certify that the within instrument was duly recorded in this office at St. Paul, on the 26 day of Aug A. D. 1913 and that the same was duly taxed to wit 31 of 15 pages 15
M. J. Gurald
Register of Deeds.
Deputy.

678444