

1887

NE Corner E. 1/4 NE 1/4 S31 T30 R23

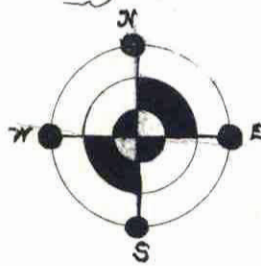
"SOO" MARIE PARK

SE 1/4 & E 1/2 of NE 1/4 - S31-T30-R23

Scale 220' to inch

July 1887

Spalding & Carr
Engineers



Know all men by these presents that we, Thomas N. Wilson and Florence A. Wilson his wife

owners and proprietors of the South east one quarter (SE 1/4) and the east half (E 1/2) of the North east one quarter (NE 1/4) of section thirty one (S31) Township thirty (T30) Range twenty three (R23) in Ramsey County, here cause the same to be platted as "Soo Marie Park" as shown in the accompanying plat and we hereby donate and dedicate to the public use forever all streets and alleys as thereon shown, Excepting from above described land the right of way of Minneapolis and St. Louis Railroad

In testimony whereof we have affixed our hands and seals this 11th day of July, A.D. 1887

Signed, sealed and delivered in presence

Thomas N. Wilson
Florence A. Wilson

Seal
Seal

This plat document is an UNOFFICIAL copy of a Subdivision Plat or Registered Land Survey and is made available for information purposes only.

To obtain an official copy please contact the Ramsey County Recorder's Office.

No. 18686.
STATE OF MINNESOTA
COUNTY OF RAMSEY
This is to certify that the within plat was filed in this office on the 15th day of July, 1887, at 9:00 A.M.
Book 8, page 25.
By _____

J. M. Schlegel
M. Wright

J. A. W. Spalding of the firm of Spalding & Carr of Minneapolis, Minnesota, hereby certify I have surveyed and platted the land described in the instrument of dedication and divided the same into blocks and lots as shown in the annexed plat the same to be known as "Soo Marie Park", said plat correctly represents said survey and divisions, that all lots and blocks are numbered in progressive number as hereon shown; that dimension of all lots, streets and alleys are respectively designated in feet and decimals of a foot; that I have placed iron monuments at each and every block corner as indicated by (I.R.C.) on the plat.

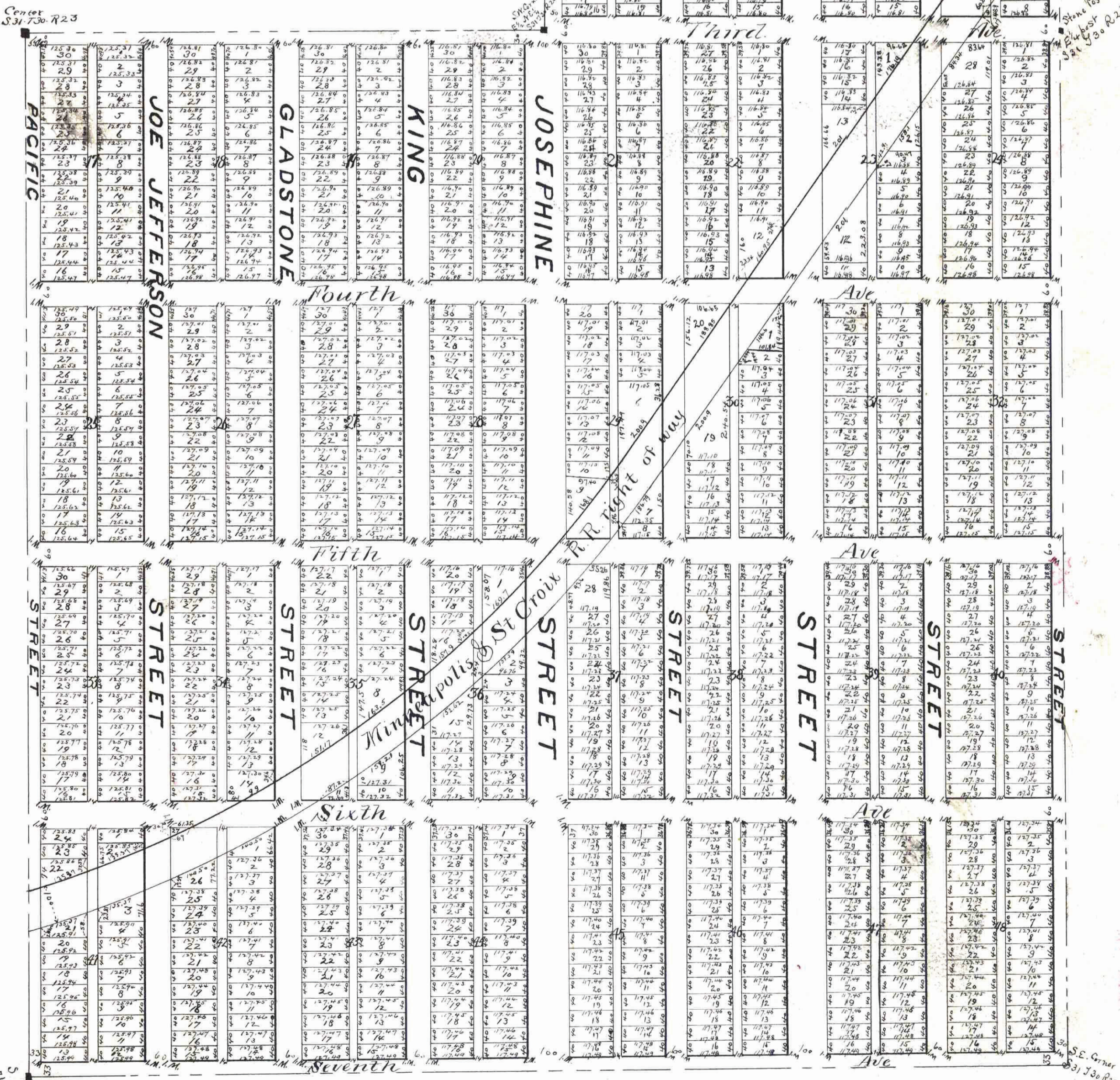
J. A. W. Spalding
M. Wright

State of Minnesota } s.s.
County of Hennepin }
On this 11th day of July A.D. 1887 before me personally came Thomas N. Wilson and Florence A. Wilson his wife to me known to be the persons described in and who executed the foregoing instrument and who acknowledged that they executed the same as their free act and deed

M. Wright
Notary Public in and for Hennepin County, Minnesota

State of Minnesota } s.s.
County of Hennepin }
On this 11th day of July A.D. 1887 before me, J. A. W. Spalding, to me known to be the person described in and who executed the above surveyor's certificate and acknowledged that he executed the same as his own free act and deed and the free act and deed of said firm of Spalding & Carr.

M. Wright
Notary Public in and for Hennepin County, Minnesota



OFFICE OF COUNTY TREASURER, ST. PAUL, MINN.
JUL 14 1887
1886 TAX PAID.
F. A. RENZ, Co. Treas.

Accepted and Approved this 14th day of July 1887
J. P. Johnson
J. A. Starky
Plat Commissioners.

Taxes paid this 15th day of July, A.D. 1887.
W. J. Rain
Co. Auditor
Per Harmon

29