

EDDY'S SUBDIVISION

Scale 1" to 40'

Edward R. Schafer.
Surveyor.

64
432918

I hereby certify to having surveyed and platted the property as described on this map as EDDY'S SUBDIVISION and have placed iron monuments at the corners of the block as shown on this map, and the same is correct.

Edward R. Schafer.
Surveyor.

State of Minnesota }
County of Ramsey } ss.

On this 16th day of October, A.D. 1912 personally appeared before me the undersigned Edward R. Schafer, to me well known, and acknowledged that he executed the foregoing certificate as his free act and deed.

Charles D. Eddy
Notary Public, Ramsey Co. Minn.
My commission expires October 23, 1914

This is to certify that Lina E. Gross, and Louis F. Gross, her husband, Elizabeth S. Schafer, and Edward R. Schafer, her husband, are the owners of Lots 1, 2, 3, & 4, Block 13, Suburban Hills Addition, and have caused the same to be surveyed and platted, and hereafter known as EDDY'S SUBDIVISION, as shown on this map, and hereby dedicate to the public, and for the public use forever all the streets, avenues, and alleys as herein indicated.

Witness our hands and seals this 16th day of October, A.D. 1912

In presence of:

Charles D. Eddy, Lina E. Gross
Edward C. Stout, Louis F. Gross
Jimmie S. Kelley, Elizabeth S. Schafer
Wm. H. Vihetadt, Edward R. Schafer

Accepted by the Assembly, Nov 21st 1912

Accepted by the Board of Aldermen Nov 19th 1912

Approved, Nov 27th 1912

Geo. J. Redington, City Clerk.

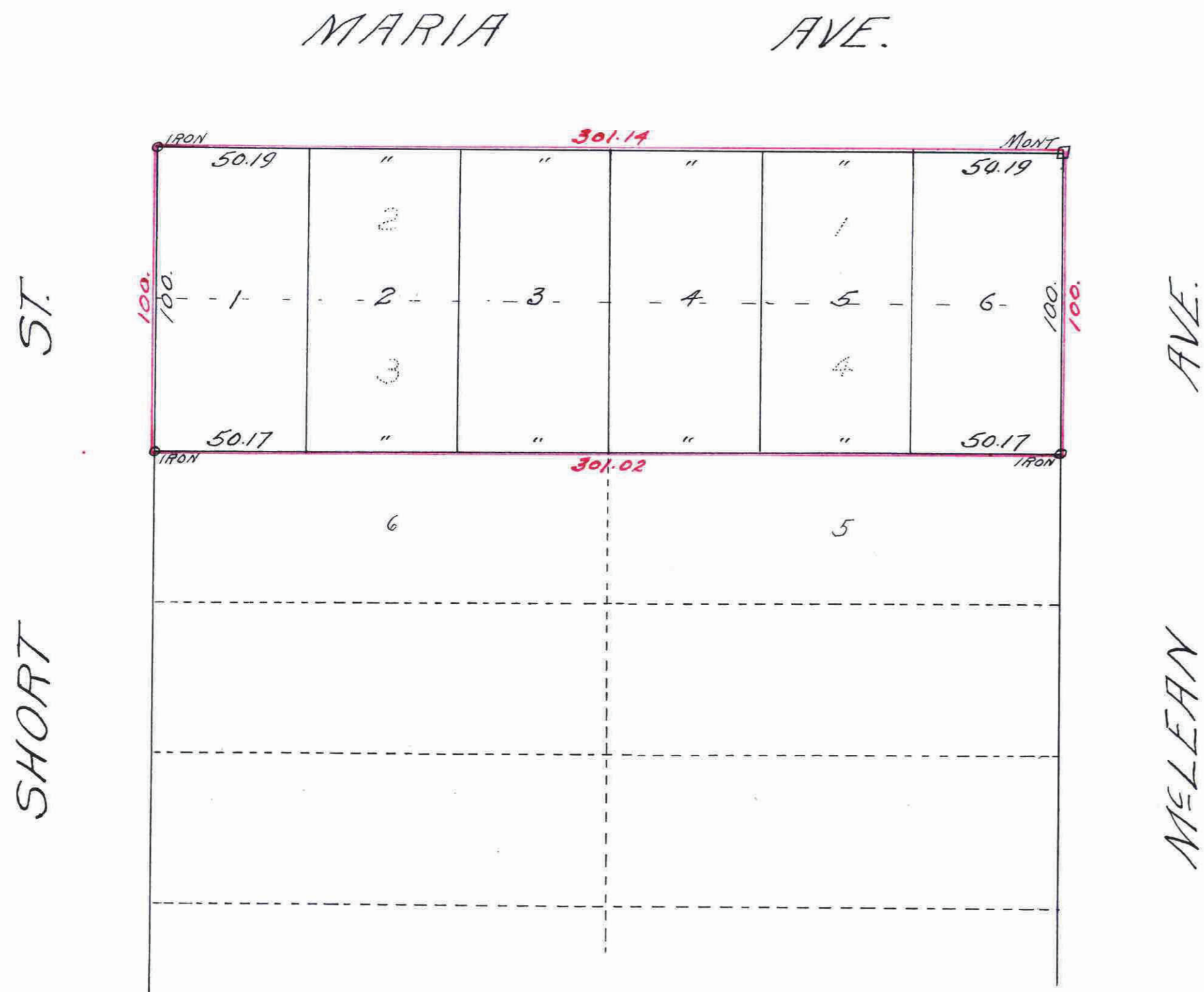
State of Minnesota }
County of Ramsey } ss.

On this 16th day of October, A.D. 1912 personally appeared before me the undersigned Lina E. Gross, and Louis F. Gross, her husband, Elizabeth S. Schafer, and Edward R. Schafer, her husband, to me well known and acknowledged that they executed the foregoing certificate as their own free act and deed.

Charles D. Eddy
Notary Public, Ramsey Co. Minn.
My commission expires October 23, 1914

Accepted and approved this 6th day of November, A.D. 1912

George L. Howard, }
Jesse W. Jordan, } Plat Commissioners.
Charles H. Bronson, }
O. Claussen, } City Engineer.



This plat document is an UNOFFICIAL copy of a Subdivision Plat or Registered Land Survey and is made available for information purposes only.
To obtain an official copy please contact the Ramsey County Recorder's Office.

CITY TREASURER'S OFFICE,
ST. PAUL, MINN.
DEC 2 1912
Assessment PAID
By *[Signature]*

TAXES PAID
AND TRANSFER ENTRIES
DEC 2 1912
By *[Signature]*

STATE OF MINNESOTA,
County of Ramsey, ss.
Office of the Registrar of Deeds.
This is to certify that the within instrument was filed for record in his office at St. Paul, on the 2nd day of Dec A. D. 1912 at 3 o'clock P.M. and that the same was duly recorded in book 30 of Town Plat maps page 19
M.C. Fitzgerald
Registrar of Deeds.
By *[Signature]*

Taxes for the year 1911 on the lands described within PAID
DEC 2 1912
JESSE FOOT, Treasurer
RAMSEY COUNTY, MINN.
Per *[Signature]*

810234