

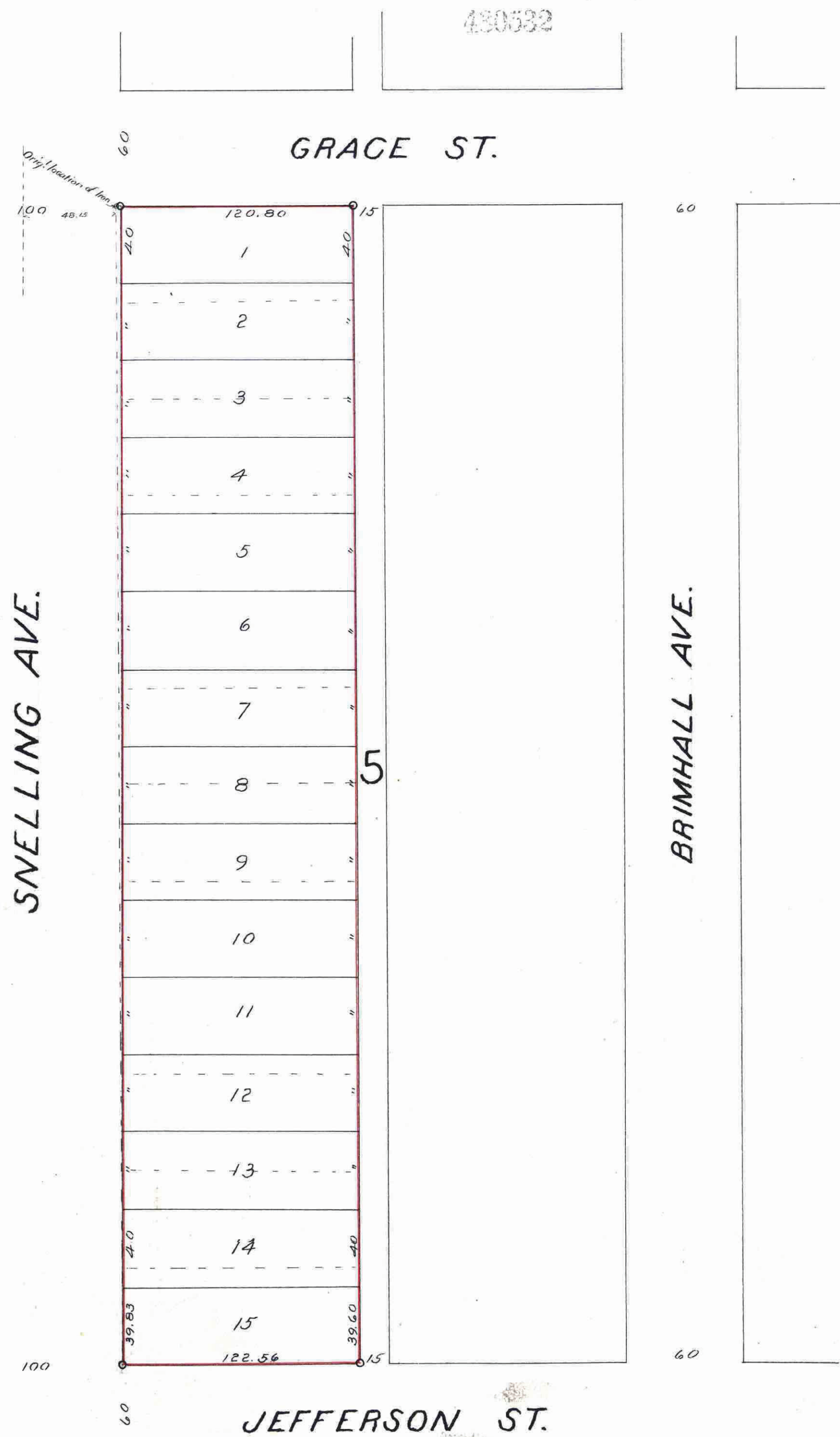
EVERGREEN REARRANGEMENT

Indicates Iron Mon't
Scale 1 in. to 50 Ft.

ST. PAUL, MINN.

Jens Pedersen
Surveyor

430532



I hereby certify to having surveyed and platted the property as described on this map as EVERGREEN REARRANGEMENT and have placed iron monuments at the corners, as shown hereon, and the same is correct.

Jens Pedersen
Surveyor.

State of Minnesota }
County of Ramsey }
On this 12 day of August
A.D. 1912 personally appeared before me, the undersigned, Jens Pedersen, to me well known, and acknowledged that he executed the foregoing certificate as his free act and deed.

W. Moore
Notary Public, Ramsey Co. Minn.
My commission expires Oct. 25, 1912

This is to certify that Frank I. Whitney and M. Louise Whitney, his wife, proprietors of Lots 1 to 12 inclusive Block 5 Sylvan Park Addition, have caused the same to be surveyed and platted and hereafter known as EVERGREEN REARRANGEMENT, as shown on this map, and hereby dedicate to the public, for public use forever, all the streets, avenues and alleys as hereon indicated.

Witness our hands and seals this 12th day of August A.D. 1912

In presence of
H. Abgath
George I. Whitney

Frank I. Whitney
M. Louise Whitney

State of Minnesota }
County of Ramsey }
On this 12th day of August A.D. 1912 personally appeared before me, the undersigned, Frank I. Whitney and M. Louise Whitney, his wife, to me well known, and acknowledged that they executed the foregoing instrument as their free act and deed.

George I. Whitney
Notary Public, Ramsey Co. Minn.
My commission expires May 18, 1914

Accepted and approved this 18th day of Oct. A.D. 1912

George B. Kenner
Charles A. Brownson } Plat Commissioners
Jessie W. Jordan
D. Raussen City Engineer

Accepted by the Assembly Oct 17th 1912
" " Board of Aldermen Oct 15th - 1912
Approved Oct 23rd - 1912
Geo. J. Redington
City Clerk

This plat document is an UNOFFICIAL copy of a Subdivision Plat or Registered Land Survey and is made available for information purposes only.

To obtain an official copy please contact the Ramsey County Recorder's Office.

STATE OF MINNESOTA,
County of Ramsey, ss:
Office of the Register of Deeds
This is to certify that the within instrument was filed for record in this office at St. Paul, on the 30th day of October A. D. 1912 at 12 o'clock P. M., and that the same was duly recorded in Book 30 of *Fourth State* Pages *16*
M. W. Fitzgerald
Register of Deeds.
By *P. L. Brown* Deputy.

Taxes for the year 1911 on the lands described within PAID
OCT 29 1912
JESSE FOOT, Treasurer
RAMSEY COUNTY, MINN.
Per *[Signature]*

CITY TREASURER'S OFFICE,
ST. PAUL, MINN.
OCT 30 1912
Assessment PAID
S. J. [Signature] City Clerk
By *[Signature]*

TAXES PAID
AND TRANSFER ENTERED
OCT 30 1912
COUNTY AUDITOR
By *[Signature]*

430532